

THE  
**LYRIC STAGE**  
YOUR THEATRICAL HOME

A one-man performance based on actor  
Maurice Emmanuel Parent's real-life adventures  
teaching in an urban public school system.

BY  
MELINDA LOPEZ

WITH  
MAURICE EMMANUEL PARENT

CONCEIVED WITH & DIRECTED BY  
MEGAN SANDBERG-ZAKIAN

**WORLD PREMIERE**  
JAN 7 - FEB 6



# MR. PARENT

LYRICSTAGE.COM | COPLEY SQ. | 617.585.5678



# A NOTE FROM THE EXECUTIVE DIRECTOR AND ARTISTIC DIRECTOR



One of us has a master's degree in education and the other has three kids in the Boston Public Schools. Needless to say, we have a great deal of investment in the story that Maurice is about to share.

When we started our partnership, we wanted to build upon the commitment that Lyric Stage has had to hiring local talent since its 1974 founding. One group of creatives that have been overlooked during the Lyric Stage's five decades is playwrights.

Simply put, we want to bring more local voices to Boston's theatrical home and also provide a platform to export those amazing plays nationally.

Within five minutes of reading an early draft of *Mr. Parent*, we knew this was a play we wanted to produce. Maurice has been one of Lyric Stage's most versatile talents as an actor, but he also made his professional directing debut with *Breath & Imagination* (which was also the first full-length production of his new company, The Front Porch Arts Collective.)

As rehearsals have been underway, we've learned to avoid certain cliches, such as referring to the public school system as broken. Observers of the debate relating to Boston's exam schools, where a leveling of opportunity is too often criticized as lowering standards, correctly witness that the system is perhaps working exactly as is intended.

This play asks provocative questions for which we have no answers, but still require energy and response. We hope you return to this story in your thoughts and to this program book a day, a week, a month after the play to consult some of its resources. Thank you too, for your ongoing support and trust, and in attending this play, which we hope you find as entertaining and engaging as its main character is to us.

Matt Chapuran  
Executive Director

Courtney O'Connor  
Artistic Director

## LYRIC STAGE BOARD OF DIRECTORS

Ron Sudol, President  
Tim Holiner, Vice President  
Glenda Fishman, Treasurer  
Sharon Parisi, Clerk

Ernesto Anguilla	Joe Gimbel
Nina Berk	G. Lee Humphrey
Jazzmin Bonner	Alice Richmond
Katie Burkhart	Stuart Rose
Sasha Castroverde	
Richard Daynard	
Amanda Eckhoff	

## LYRIC STAGE ADVISORY COUNCIL

Hannah Taytslin  
Janet Spitz  
Co-Chairs

Barry Chaiken, MD	David Miller
Carmen Chan	Baron Pugh
Susan Gasset	Shwetha Ravi
Wendy Gutterson	Joe Richard
Jo-An Heileman	Dick Rousseau
Michelle Landers	Emily Stidsen
Jo Frances Meyer	Ruth Whitney

The Lyric Stage Company of Boston  
Courtney O'Connor Artistic Director | Matt Chapuran Executive Director  
presents

THE WORLD PREMIERE OF

# MR. PARENT

by  
**MELINDA LOPEZ**

with  
**MAURICE EMMANUEL PARENT**

Conceived with and Directed by  
**MEGAN SANDBERG-ZAKIAN**<sup>o</sup>

Scenic Design, **Cristina Todesco**\*\*

Costume Design, **Yao Chen**

Lighting Design, **Karen Perlow**\*\*

Original Music and Sound Design, **Arshan Gailus**\*\*

Props Artisan, **Lauren Corcuera**

Associate Set Design, **Danielle DeLaFuente**

Voice and Text Coach, **Christine Hamel**

Production Stage Manager, **Elizabeth Yvette Ramirez**\*

Assistant Stage Manager, **Sarah Bord**

Featuring: **Maurice Emmanuel Parent**\*

Lyric Stage's 2021/22 Season sponsored by  
**G. Lee & Diana Humphrey and Bank of America**

Production sponsored by **Judith & James Barr**

Maurice Emmanuel Parent sponsored by **Ruth Rotundo Whitney**

Director Megan Sandberg-Zakian sponsored by **Ron Sudol**

Public Education Consultant Neema Avashia sponsored by **Susan H. Gassett & Rick Dennen**

*MR. PARENT* is produced by special arrangement with the Playwright and Harden Curtis Kirsten Riley Agency,  
attn Mary Harden, 214 W 29th Street, Suite 1203 New York, NY 10001.

*MR. PARENT* was developed through the Breaking Ground Festival supported by the Stanford Calderwood Fund for  
New American Plays at The Huntington Theatre Company, Boston Massachusetts, April 2019.

Selections from *Angels in America* by Tony Kushner, *Boo!candy* by Robert O'Hara, *Snow Queen* by Kirsten Brandt, Haddon  
Kime, and Rick Lombardo, and *The Mountaintop* by Katori Hall, used by permission from each of the incredible playwrights.

The Lyric Stage Company of Boston operates under the NEAT Agreement with Actors' Equity Association and  
is a member of NEAT [The Producers' Association of New England Area Theaters], and StageSource.

The Lyric Stage Company of Boston is supported in part by a grant from The Massachusetts Cultural Council,  
a state agency, and The Boston Cultural Council, a local agency which is funded by The Massachusetts Cultural Council,  
administered by the Mayor's Office of Arts and Culture.

\*\*Member of Actors' Equity Association, the Union of Professional Actors and Stage Managers in the United States  
\*\*Represented by United Scenic Artists, Local USA 829 of the IATSE | \*Stage Directors and Choreographers Society



## A NOTE FROM THE DIRECTOR OF *MR. PARENT*

In early 2018, I was directing a wonderful ensemble, including Maurice Emmanuel Parent, in The Huntington Theatre's production of *Skeleton Crew*. On every break, before and after every rehearsal, Maurice was telling stories about teaching. And the room was roaring with laughter, often hushing into deep sighs or quickly wiping tears. Though I've directed Maurice in many shows over the years, *Skeleton Crew* was his first show after stepping away from a full-time job teaching in the Boston Public Schools. And he couldn't stop telling stories about 'his kids.'

When I asked Maurice if we could make a show out of these stories, he said, "Probably not." Then I said, "What if Melinda Lopez would write it?" That produced an immediate yes. Over the past several years working on *Mr. Parent* with these two extraordinary collaborators, the play has evolved from the story of an artist choosing between performing and teaching to the story of a queer Black man searching for a space in which he can be his full self to a deeply personal inventory of how the education system fails both students and teachers.

It isn't lost on me that the big questions of the play—'how do I care for my community and myself?,' 'where can I be my full self?,' 'what do I do when the work I love feels like it's slowly killing me?'—feel just as relevant to making theater as they are to teaching. These questions will persist as long as the systems that shape our civic and cultural lives persist in their current inequitable forms.

Megan Sandberg-Zakian  
Director



**J.P. LICKS**  
*Ice Cream • Yogurt • Coffee*

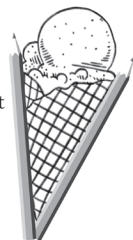
Thank you to Lyric Stage Company of Boston for telling the story of Mr. Parent and public school teachers like him.



20210220

Enjoy one free topping when you show this coupon at our Boylston St or Newbury St Stores  
Good through June 30, 2022

\*no cash value\*cannot be combined with any other offer\*  
\*one coupon per order\*



## CAST

Maurice Emmanuel Parent\* .....Mr. Parent

*\*Denotes member of Actors' Equity Association, the Union of Professional Actors and Stage Managers in the United States*

## RUNNING TIME

Approximately 90 minutes.

## SPECIAL THANKS

*Mr. Parent* was developed with support from the Mellon Foundation and the National Playwrights Residency Program. Thanks to the Actors Shakespeare Project, The Huntington Theatre Company, TheatreWorks Hartford, and Kevin J. P. Hanley for invaluable support in the development of this work. Special thanks to Thabiti Brown.

And an extra special thanks from Mr. Maurice Parent to all the students, educators, and parents whose stories and experiences live in his heart every day. And to his heavenly inspiration, Johnny Lee Davenport.



Director Megan Sandberg Zakian<sup>®</sup> and Maurice Emmanuel Parent\*. Photo taken by Mark S. Howard.

<sup>®</sup>Member of Actors' Equity Association | <sup>®</sup>Member of Stage Directors and Choreographers Society

## ABOUT YOUR LYRIC STAGE COMPANY OF BOSTON VISIT

For more on how to contact us, Box Office hours, ticketing & performance policies, and other FAQs go to [lyricstage.com](http://lyricstage.com) & click on Your Visit.





**Maurice Emmanuel Parent\*** (Mr. Parent) Lyric Stage: *Into The Woods* (Wolf/Cinderella's Prince), *On The Town* (Figment/ensemble), *Man of La Mancha* (Dr. Carrasco/The Duke); Director: *Breath & Imagination* (starring Davron Monroe and Yewande Odetoyinbo). Other credits (select): Actors' Shakespeare Project (resident company member), Barrington Stage, Boston Theatre Works, Cape Playhouse, Central Square Theater, Commonwealth Shakespeare Project, Fulton Opera House, Greater Boston Stage, The Huntington Theatre, Music Theatre of Wichita, New Repertory Theatre, Northern Stage, Off the Grid Theatre Co., SpeakEasy Stage Company, Wheelock Family Theatre. Television: *Castle Rock*, *Kevin Can F\*\*\* Himself*. Commercials: Wayfair, Bank of America, WB Mason, Flooring America, Sweet Baby Ray's BBQ sauce. Winner of 2 Elliot Norton Awards, 3 Independent Reviewers of New England [IRNE] Awards, and one ArtsImpulse Award. After 6 years in the Boston Public School system, Maurice began teaching in higher education. Currently, he is a Professor of the Practice in the Tufts University Department of Theatre Dance and Performance Studies where he will be directing a production of *Spring Awakening* this spring. He is a Co-Founder/Co-Producing Artistic Director of The Front Porch Arts Collective, a Black theater company committed to advancing racial equity through art. [mauriceparent.com](http://mauriceparent.com) | [frontporchart.org](http://frontporchart.org)

**Melinda Lopez** (Playwright) is the recipient of the 2019 Elliot Norton Award for Outstanding Achievement, recognizing her 20-year career. She is a multiple award-winning playwright and performer. Pandemic work includes the audio series, *Dream Boston* and *Black Beans Project* (co-created with Joel Perez). The Huntington Theatre: *Mala*, [Best New Play, Elliot Norton Award; available on Audible in Spanish and English]; *Yerma*, *Becoming Cuba*, *Sonia Flew* [Best New Play, Best Production, Elliot Norton Award]. Boston Playwrights Theatre: *Back the Night*. Central Square Theatre: *Orchids to Octopi* [Best New Play, IRNE]. Melinda also performs on stage, radio, and in film. She has served as a panel member for the NEA, and has enjoyed residencies with the Mellon Foundation National Playwrights Residency, The Huntington Theatre, Sundance, The Lark, The New York Theatre Workshop, and Harvard University. She was mentioned by President Obama

in his speech to the Cuban and American people in 2016. Mayor Marty Walsh declared October 29, 2016 "Melinda Lopez Day in the City of Boston." Melinda is currently the Artist-in-Residence at The Huntington Theatre, and professor at Northeastern University.

**Megan Sandberg-Zakian**<sup>o</sup> (Director). Lyric Stage: Debut. Favorite recent theatre projects: California Shakespeare Theatre: *House of Joy*. New York Theatre Workshop: *Nat Turner in Jerusalem*. The Huntington Theatre: *Skeleton Crew*. Merrimack Repertory Theatre: *The Royale*. Audio: *Rapture Season*, *Evil Eye* [Audible], *The Usual Unusual* [SpeakEasy Stage Company]. Megan is a co-founder of Maia Directors, a consulting group for artists and organizations engaging with stories from the Middle East and beyond. She is a graduate of Brown University, holds an MFA in Interdisciplinary Arts from Goddard College, and is a proud member of the national union for stage directors and choreographers, SDC. Her first book, *There Must Be Happy Endings: On a Theatre of Optimism and Honesty* is available from The 3rd Thing Press. Megan lives in Jamaica Plain, MA, with her wife, Candice. [Megansz.com](http://Megansz.com)

**Cristina Todesco\*\*** (Set Design) Lyric Stage: *The Understudy*, *Dead Man's Cell Phone*, *Grey Gardens*, *Three Tall Women*, *The Underpants*, *Arms and the Man*, *A Little Night Music*. Theater companies include Actor's Shakespeare Project, Boston Conservatory, Boston Symphony Orchestra, Capital Repertory Theatre, Company One, ART Institute, Commonwealth Shakespeare Company, The Huntington Theatre, Merrimack Repertory Theatre, New England Conservatory, SpeakEasy Stage Company, Trinity Repertory Company, Williamstown Theater Festival, and many more. Cristina teaches at Boston University and is the winner of 4 Elliot Norton Awards and one IRNE for Outstanding Design. She holds an MFA in scenic design from BU's School of Theatre Arts. [cristinatodesco.com](http://cristinatodesco.com)

**Yao Chen** (Costume Design) Lyric Stage: Debut. Merrimack Repertory Theatre: *Until the Flood*, *The Rise and Fall of Holly Fudge*. Trinity Repertory Company: *Radio Golf*. Indiana Repertory Theatre: *The House that Jack Built*, *Diary of Ann Frank*, *The Paper Dream of Harry Chin*. Seattle Children's Theatre: *The Little Prince*. Shakespeare Theatre of New Jersey: *Titus and Andronicus*, *The Merry Wives of Windsor*. Orlando Shakespeare Theatre: *Antony and Cleopatra*, *Dr. Jekyll and Mr. Hyde*. Contemporary American



Theatre Festival: *Ushuaia Blue, Babel*. Four Seasons in Orlando Repertory Theatre. International: Dong Gong Theatre in Beijing, China: *I am Tai Ping Goat*. Theatre Espressivo, San Jose, Costa Rica: *Amadeus*. yao-chen.com

**Karen Perlow\*\*** [Lighting Design] Lyric Stage favorites: *Anna Christie, Cat on a Hot Tin Roof, Hold These Truths, The Wolves, Death of a Salesman, Who's Afraid of Virginia Woolf, Miss Witherspoon*. SpeakEasy Stage Company: *Once, History Boys, Admissions, Violet, Shakespeare in Love, Fun Home*. Merrimack Repertory Theatre: *The Royale, Native Gardens*. Actors' Shakespeare Project: *Macbeth, School for Scandal*. New Repertory Theatre: *Long Day's Journey into Night, Lieutenant of Inishmore, Cherry Docs*. Odyssey Opera: *La Belle Helene*. Underground Railway Theater: *Arabian Nights*. Gloucester Stage Company: *Dancing at Lughnasa, Jacques Brel*. Karen is proud to serve as the treasurer of the Theater Community Benevolent Fund (tcbf.org) and teaches ESOL. Having seen *Mr. Parent* in its online format, she is excited to be a part of the live stage version of this engaging new work. abouttheartists.com/artists/329435-karen-perlow

**Arshan Gailus\*\*** [Original Music and Sound Design] Lyric Stage: 11 productions, including *The Cake, Hold These Truths, Stage Kiss, Fast Company, Chinglish, The Temperamentals, Superior Donuts*. Capital Repertory Theatre [NY]: *Lobby Hero, The Royale*. Plays in Place: *The History Plays, The Nature Plays*. California Shakespeare Theater [CA]: *House of Joy* (World Premiere). Gloucester Stage Company: *Dancing at Lughnasa, The New Electric Ballroom*. Shakespeare & Company: *Twelfth Night, As You Like It, The Tempest*. ArtsEmerson: *Kiss, Mala* (World Premiere; also presented at The Guthrie Theater [MN] and The Huntington Theatre). Actors' Shakespeare Project: *Exit the King, The Tempest, Hamlet, Richard II, Phèdre, The Cherry Orchard, Pericles*, and more. Various productions for The Huntington Theatre, Contemporary American Theatre Festival [WV], Commonwealth Shakespeare Company, New Repertory Theatre, The Nora Theatre Company, SpeakEasy Stage Company, American Repertory Theatre Institute, Company One, Suffolk University, Brandeis University, Harvard University, Emerson College. Elliot Norton Award and IRNE Award winner. arshangailus.com

**Elizabeth Yvette Ramirez\*** [Stage Manager] Lyric Stage: Debut. American Repertory Theater: *Macbeth In Stride*. Two River Theater: *Szygy, Optional Boss Battle*. Hanover Theater Repertory: *Julius Caesar*. Central Square Theater: *Front Porch @ Starlight, Vanity Fair, A Christmas Carol* (2018 & 2019), *Journey to the West*. New Repertory Theatre: *Keyping, Lonely Planet, Statements After an Arrest....* Actors' Shakespeare Project: *King Lear*. Greater Boston Stage Company: *Three Musketeers, The Salonnières, Being Earnest*. Moonbox Productions: *Caroline, or Change*. Reagle Music Theatre: *The Music Man, Anything Goes*. Her directing work was most recently seen at the Women & Science Festival with Central Square Theater. She has also directed with Front Porch Arts Collective, Flat Earth Theatre, The Calliope Project, Ministry of Theater, and Kidstock Creative Theatre.

**Sarah Bord** [Assistant Stage Manager] Lyric Stage: Debut. Emerson Stage: *Baltimore, Men on Boats, Flora the Red Menace, Lucky Stiff*. Thanks to her mom for her support.

**Lauren Corcuera** [Props Artisan] Lyric Stage: *The Last Five Years, Be Here Now, Breath & Imagination, Little Shop of Horrors, Murder on the Orient Express, The Cake, The Treasurer*. Gloucester Stage Company: *Barefoot in the Park, Tiny Beautiful Things, Seared*. Emerson Stage: *Stupid F\*\*\*ing Bird*. Brandeis University: *Circle Mirror Transformation*. Lauren is currently the assistant prop director at Emerson College.

**Danielle DeLaFuente** [Associate Set Design] Lyric Stage: Debut. Bay Street Theater: *Incognito*. Boston University: *Colossal, A Midsummer Night's Dream, A Mouthful of Birds, Photograph 51* [Props]. Danielle is currently getting a BFA in Scene Design at Boston University. Special thanks to Cristina and the team at the Lyric for welcoming Danielle with open arms! Instagram: @delafuente.design, danielledelafuente.com.

**Neema Avashia** [Public Education Consultant] has been a teacher and education activist in the Boston Public Schools since 2003. She currently teaches Ethnic Studies at the BCLA/McCormack Lower School in Dorchester. Raised in southern West Virginia by Indian immigrant parents, Avashia also is a writer who uses personal essays to explore questions of race, gender, sexuality, and identity. Her first book, *Another Appalachia: Coming Up Queer and Indian in a Mountain Place*, will be published by WVU Press in March of 2022.

**Matt Chapuran** [Executive Director] Matt was Managing Director of the Lyric Stage from 2014 to 2018. He was previously Managing Director of Stoneham Theatre, where he ran the 2010 Boston Marathon with Producing Artistic Director Weylin Symes in support of Stoneham Theatre's educational mission. Matt has also served as Director of Development for Conservatory Lab Charter School and managed institutional giving for The Huntington Theatre. At the Nora Theatre Company, Matt was Managing Director during the inception of a capital campaign that ultimately led to the construction of the Central Square Theater. Matt has performed, taught, and directed improvisation for two decades, including as a part of Babson College's MBA program, as one half of the improv team *The Angriest Show in the World*. He currently teaches Arts Management at Emerson College. He lives in Roslindale with his wife and their three daughters.

**Courtney O'Connor** [Artistic Director] Courtney joined the full-time staff of the Lyric Stage in 2018 and was named Artistic Director in 2020. She has directed several pieces for the Lyric Stage, including

*Stones in His Pockets*, *Red Hot Patriot*, and *The Cake*. Courtney is a senior affiliated faculty member in Performing Arts at Emerson College. In addition to directing for theatres and universities, Courtney has directed multiple site-specific productions at locations including Mount Auburn Cemetery and Boston's Old State House. Through her work with the Coyote Theatre Project, she oversaw the creation of more than 200 new 10-minute plays written by youths from Boston. Courtney has received the Elliot Norton award for her work as the Associate Director on the Lyric Stage's production of *The Life and Adventures of Nicholas Nickleby* and the Alan L. Stanzler Award for Excellence in Teaching.

**\*Actors' Equity Association (AEA)** was founded in 1913. The first of the American actor unions, its mission is to advance, promote and foster the art of live theatre as an essential component of our society. It represents more than 40,000 actors, singers, dancers, and stage managers working in hundreds of theatres across the US. Members are dedicated to working in the theatre as a profession and upholding the highest artistic standards. AEA



**SPEAKEASY STAGE**

**PEOPLE, PLACES & THINGS**

JAN 7 - FEB 5, 2021

BY **DUNCAN MACMILLAN**

DIRECTED BY **DAVID R. GAMMONS**

**SPEAKEASYSTAGE.COM** 617.933.8600


@SPEAKEASYSTAGE #BOSTONBOLD

f i t

**A'INT MISBEHAVIN'**  
The **FATS WALLER** Musical Show  
June 9 - 26, 2022

Directed by  
**Maurice Emmanuel Parent**

Co-produced with The Nora@Central Square Theater and The Front Porch Arts Collective



**GREATER BOSTON STAGE COMPANY**

Play tickets at:  
[greaterbostonstage.org](http://greaterbostonstage.org)  
781-279-2200

395 MAIN STREET, STONEHAM, MA



negotiates wages, working conditions, and provides a wide range of benefits, including health and pension plans. Through its agreement with Equity, this theater has committed to the fair treatment of the actors and stage managers employed in this production. AEA is a member of the AFL-CIO and affiliated with FIA, an international organization of performing arts unions. actorsequity.org

**\*\*United Scenic Artists** (USA-Local 829) is a labor union representing designers and artists in the entertainment industry. Membership includes the security of working under a collective bargaining agreement, better working conditions and wages, and access to health insurance, a pension plan, an annuity plan, and a 401(k). Members are artists and craftspeople working in film, theatre, opera, ballet, television, industrial shows, commercials, and exhibitions. usa829.org

**°Stage Directors & Choreographers Society** (SDC) is the theatrical union that unites, empowers, and protects professional Stage Directors and Choreographers throughout the United States. Our mission is to foster a national community of professional stage

Directors and Choreographers by protecting the rights, health and livelihoods of all our Members; to facilitate the exchange of ideas, information and opportunities, while educating the current and future generations about the role of Directors and Choreographers; and to provide effective administrative, negotiating and contractual support. sdcweb.org

**ADDITIONAL PRODUCTION STAFF**

Head Electrician, **Gabriel Goldman**

Audio Supervisor, **Andrew Duncan Will**

Wardrobe Supervisor, **Hannah Schuurman**

THE UMBRELLA STAGE COMPANY

THE COLORED MUSEUM

JAN 28 - FEB 20

"Redefines our ideas of what being Black means in contemporary America."

Written by George C. Wolfe  
Directed by Pascale Florestal

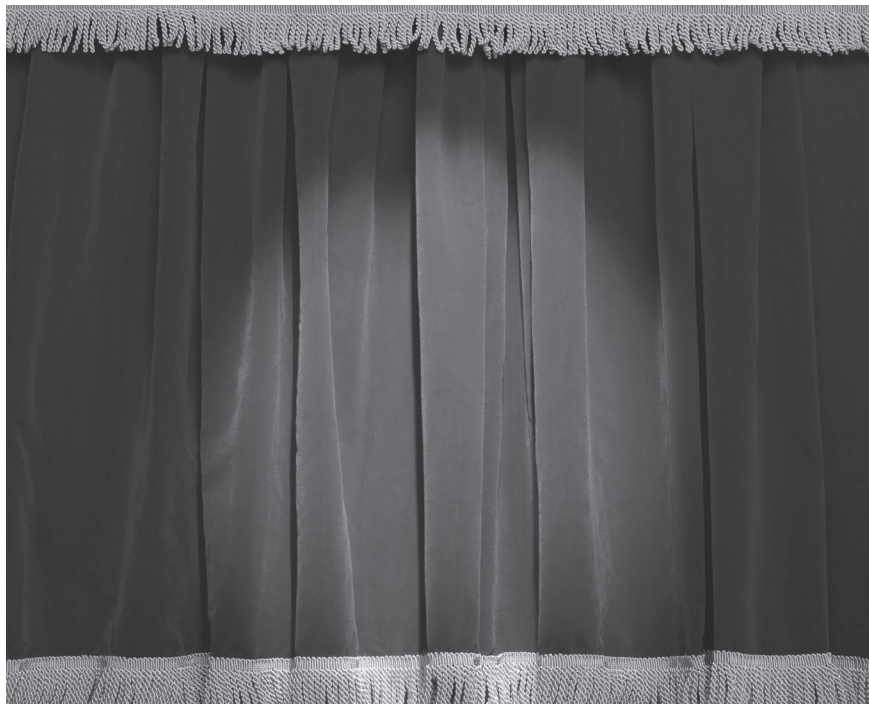
\$15 Student; \$24 Senior; \$25-\$44 Adult; 20-for-\$20 Specials!

40 STOW STREET, CONCORD | 978.371.0820 | TheUmbrellaStage.org

THE BOMB-ITTY OF ERRORS

BY JORDAN ALLEN-DUTTON  
JASON CATALANO  
GREGORY J. QAIYUM  
JEFFREY QAIYUM  
& ERIK WEINER  
DIRECTED BY CHRISTOPHER V. EDWARDS

actors' shakespeare project



## Thanks for putting art in the heart of the community

Bank of America recognizes the Lyric Stage Company of Boston for its success in bringing the arts to performers and audiences throughout the community. We commend you on creating an opportunity for all to enjoy and share a cultural experience.

Visit us at [bankofamerica.com/massachusetts](https://bankofamerica.com/massachusetts).

**BANK OF AMERICA** 

INTRODUCING

**\$5**  
**FRIDAYS!**

**Five Dollar Fridays** offers another way for audiences to experience live theater at an affordable cost. *100 tickets for the first Friday of every production will be set aside to be sold for \$5.*

Sponsored by Jan & Stuart Rose.

**LYRIC**  
*for All*

**Lyric Stage promotes inclusivity & connection in an effort to integrate live theater into the lives of all residents of Greater Boston.**

**Affordable Price Options include:**

- \$30 Under 35
- \$25 Side Section Seats
- \$10 Student Tickets
- Senior Discount

View the full listing of participating organizations at [lyricstage.com/tickets/lyric-for-all](http://lyricstage.com/tickets/lyric-for-all).

For more information visit



The cast of *Camelot* (2017).

THE LYRIC STAGE  
YOUR THEATRICAL HOME

A love letter to Shakespeare.

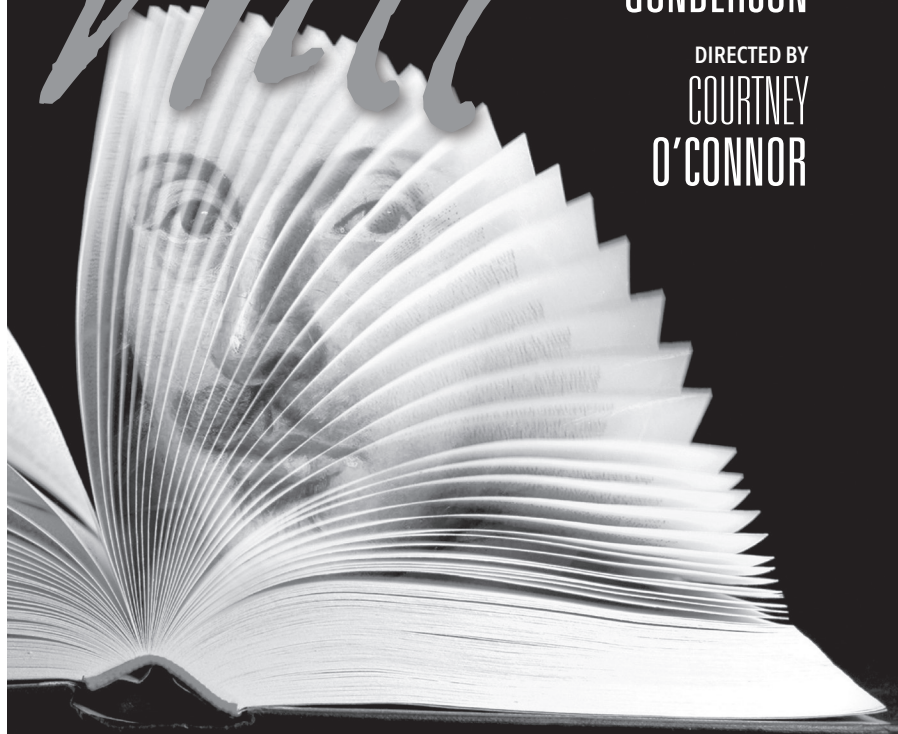
FEB 25 - MAR 27

# THE BOOK OF

*Will*

BY LAUREN  
GUNDERSON

DIRECTED BY  
COURTNEY  
O'CONNOR



LYRICSTAGE.COM | 617.585.5678



2021/22 SEASON SPONSORS:  
G. Lee & Diana Humphrey

BANK OF AMERICA

PRODUCTION SPONSORS:  
Joe Richard &  
René Morrissette

Mass Cultural Council

BCC BOSTON CULTURAL COUNCIL



**BUSINESS  
WELL-CRAFTED**

DESERVES BANKING  
THAT IS TOO.

**BrooklineBank**

[BROOKLINEBANK.COM](http://BROOKLINEBANK.COM)



“The intimacy of the Lyric Stage is unmatched. Unobstructed views of the action throughout and so close to the players you feel like you’re part of the action. The offerings are varied and always of Broadway quality.” – PAUL W., SUBSCRIBER

# GET IN ON THE ACT!

**SPONSORSHIPS ARE AVAILABLE FOR THIS SEASON. PLEDGE YOUR SUPPORT FOR GREAT THEATER!**

**We have artist, design, and production sponsorships available for the 2021/22 season — so now is the time to pledge your support for Great Theater!**

**Director/Designer/Choreographer Sponsor Benefits:**

- Special rehearsal & event invites
- Program recognition
- Complimentary tickets
- Autographed production poster

**Artist & Design Element Sponsor Benefits:**

- Special rehearsal & event invites
- Program recognition

**Sponsorship Levels:**

- Season, \$20,000 — **SOLD OUT!**
- Musical Production, \$12,000 — **SOLD OUT!**
- Play Production, \$7,500 — **SOLD OUT!**
- Director/Musical Director/Choreographer, \$5,000
- Actor, \$1,000

**THE LYRIC STAGE**

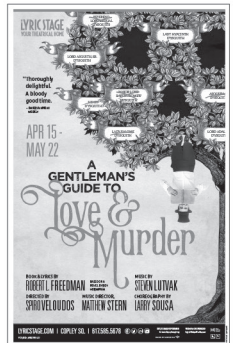
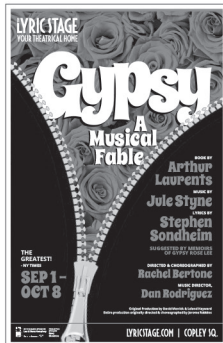
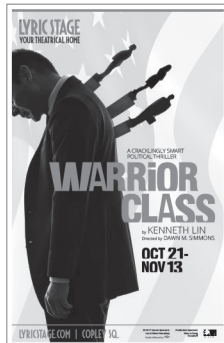
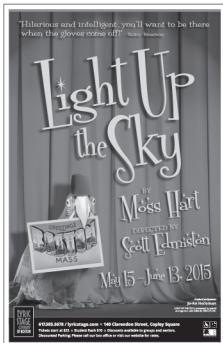
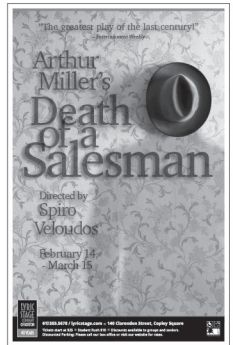
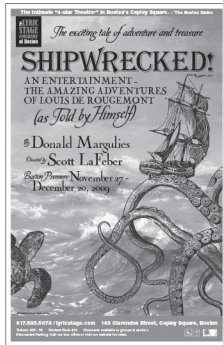
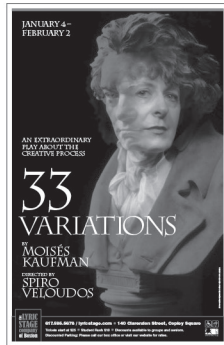
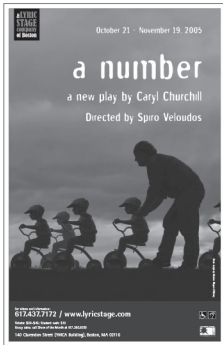
To make a sponsorship pledge or For more information, please contact Sarah Leaf-Herrmann, Director of Development: [Sarah@LyricStage.com](mailto:Sarah@LyricStage.com) or 617.585.5683.

Barlow Adamson & Samantha Richert  
in *Be Here Now* (2021).

# PRODUCTION SPOTLIGHT: GRAPHIC DESIGN



Melissa Wagner-O'Malley, Lyric Stage's resident graphic designer since 2001 is a vital part of the marketing team who uses her creativity, talents, and experience to bring the titles of each season to life. For over 20 years, Melissa has designed graphics and treatments for Lyric Stage that result in dynamic, bold, playful, and thoughtful representations of each show. Melissa notes, "Since Spiro Veloudos gave me my start in designing for theater way back when, some of my favorite designs have been the ones that were more of a challenge to create an engaging and intriguing representation of what the show encompassed. Like all the best aspects of theatre, it is a collaborative exercise. I have enjoyed designing posters for shows my husband [Terrence O'Malley: *Epic Proportions, 1776, Light Up the Sky*] and our friends have lent their talents to and sharing my process—and the productions—with our daughter. Her first shows here were *Avner, the Eccentric* and *Shipwrecked!* and she now performs in and does lighting for her high school's productions. It definitely makes Lyric Stage our family's theatrical home." Melissa is a valued and treasured member of the Lyric Stage family.



Generous friends like you advance our mission to produce and present live theatre in Greater Boston with an intimate approach that promotes inclusivity and connection. The Lyric Stage leads an effort to integrate live theater and theater education into the lives of all residents of greater Boston. On behalf of the Board of Directors, the Advisory Council, the staff, and our company of Boston-based theatre artists at the Lyric Stage Company of Boston, we extend our sincere thanks to those who make our work possible. Thank you for giving to YOUR theatrical home.

**This list has been updated to reflect gifts through December 16, 2021. For questions, concerns, or details please contact Sarah@LyricStage.com.**

**PRODUCING ARTISTIC  
DIRECTOR'S CIRCLE  
(\$15,000+)**

Anonymous [1]  
Bank of America Charitable  
Foundation  
Nina & Don Berk  
BPS Arts Expansion Fund at  
EdVestors  
The Donald E. Fulton  
Charitable Trust  
The Estate of  
Joan S. Greenberg  
Jo-An Rolfe Heileman  
Tim & Linda Holiner  
G. Lee & Diana Humphrey  
Massachusetts Cultural  
Council  
Massachusetts Development  
Finance Agency  
Sharon & John Parisi  
The Shubert Foundation  
Richard & Sally Zeckhauser

**PRODUCER'S CIRCLE  
(\$10,000-\$14,999)**

The Church Home Society, Inc.  
Jennifer L. Eckert  
Mary K. Eliot  
Joseph Gimbel &  
Joanne Strobel  
Karen Johansen &  
Gardner Hendrie  
Paul Kastner  
Alice Richmond &  
David Rosenbloom  
Ron Sudol  
Mary & Doug Woodruff

**DIRECTOR'S CIRCLE  
(\$5,000-\$9,999)**

Ernesto & Melissa Anguilla  
Judith & James Barr  
Brookline Bank  
Don & Susan Casey  
City of Boston  
The Fanny Cox Foundation  
David Crandell &  
Wendy Gutterson  
Peggy Davis  
Richard & Carol Daynard

Amanda Eckoff &  
Randall Hall  
Glenda & Bob Fishman  
Susan H. Gasset &  
Rick Dennen  
Google, Inc.  
Christopher R. Yens &  
Temple Gill  
Garth & Lindsay Greimann  
The Helen G. Hauben  
Foundation  
Bruce Hauben &  
Joyce Brinton  
James G. Kamitses &  
Cynthia Bencal  
Highland Street Foundation  
Bessie Pappas Charitable  
Foundation  
Physician Management  
Resources  
Joe Richard &  
René Morrisette  
The Rodgers Family  
Foundation  
Jan & Stuart Rose  
Richard & Mary Scott  
Sam & Gretchen Shubrooks  
State Street Foundation  
Tiny Tiger Foundation  
David & Deborah Wang

**BENEFACTOR'S CIRCLE  
(\$2,500-\$4,999)**

Howard & Katherine Aibel  
Foundation  
Marcia Bartusiak &  
Steve Lowe  
Carol J. Bresler &  
Carolyn A. Billinghurst  
The Bresler Family  
Foundation  
Katharine Burkhart  
Matt Chapuran &  
Michelle LeBlanc  
JoAnne Walton Dickinson &  
John Dickinson-Eaton  
Peter & Myrna Finn  
First Republic Bank  
Jeffrey Guenette, *In Memory  
of Margarita Martinez*

Hamilton Company  
Charitable Foundation  
Sarah & Eric Hanselman  
Edgar Knudson & Louis Mula  
Robert Kuhn & Darcy Devney  
Jack & Dottie MacKeen  
Massachusetts Convention  
Center Authority  
Jo Frances Meyer  
Martha Narten  
Stephen & Margaret Ober  
Gustavo Pena & Kerry Weiss  
Joe Quinn & Diane Juliar  
Allison K. Ryder &  
David B. Jones  
David & Ann St. Germain  
Susan & Michael Scott  
Gayle Smalley & Judith Curby  
Anita E. Springer  
Steve & Donna Tritman  
Jean Walsh  
Ruth Rotundo Whitney  
Mrs. Katharine &  
Marshall Wolf  
Linda & Mark Zaitlin  
Michael Zody & Megan Rokop

**PATRON'S CIRCLE  
(\$1000-\$2499)**

Anonymous [3]  
Cynthia Aber  
Peter Ambler & Lindsay Miller  
Jacquelyn & Robert Apsler  
Mary Antes  
Patricia Aronson  
Jeannine M. Ayotte  
Dr. Nancy &  
Christopher Baker  
Lee & Michael Behnke  
Diane & Fred Berk, *In Honor  
of Nina & Don Berk*  
Blackbaud Giving Fund  
Jazzmin G. Bonner  
Gregg & Nell Borgeson  
Jonathan & Dixie Borus  
Zach & Willis Durant-Emmons  
Susan Brown  
Carol Caro  
Cara & Tony Casendino  
Nancy & Ron Chapuran  
The James D. & Veronica  
E. Chesterton Family  
Foundation  
Michael Connery &  
Gene Marley III  
Francine & Bill Crawford,  
*In Honor of Spiro Veloudos*  
Charles & Nancy Curtiss  
Sandra & Doug Dapprich  
Sarah E. deLima  
Jon-Daniel Durbin  
Jean Chapuran Durling,  
*In Honor of Matt Chapuran*  
William & Susan Fink  
Joy Frieman  
Phillip & Barbara Graceffa  
Ray & Joan Green  
Sylvia E. Green  
Grace & Bill Gregor  
Serena & Brent Hall  
G. Neil & Anne Harper  
Tom & Nancy High  
Agnes & John Howell  
Andrea Humez  
Emily Anne &  
Jeffrey Jacobstein  
Alexandra Pollard &  
Jeffrey Kapell  
Estrellita Karsh  
Carol & Jim Kent  
Joan Kinne  
Michelle Landers  
Susan A. Lester  
Will & Anastasia Lyman  
Sharon A. Miller  
Courtney Mitchell  
Carol O'Hare &  
Walter McDonald  
Patrick & Lynn O'Shea  
Arthur & Athena Papas  
Carla Pepka  
Jean Rosenberg &  
Peter Southwick  
Richard Rousseau  
Susan E. Rudd  
Elyse & Donald Schuerman  
Marilyn M. Shesko  
Somerled Arts/Macdonald CGF  
Jan Spitz & Steve Truslow  
Martha Stearns

Jan & Chris Swain  
 Hannah Taytslin &  
 Michael Devine  
 Audrey & Paul van Duyn,  
*In Honor of Gregg &  
 Nell Borgeson*  
 The Village Bank  
 Arthur & Andrea Waldstein  
 Joelle & Harvey Wartosky  
 Steven & Stephanie Wasser  
 Martin Wattenberg  
 Jo Wellins, *In Memory of  
 DG Wellins*  
 Jane & Michael Wojcik  
 Jerry Wheelock &  
 Elizabeth Wood  
 Suzanne Whalen  
 Sonja Yates  
 Christina Young &  
 Michael Sampson

**DONOR'S CIRCLE  
 (\$500-\$999)**

Anonymous [1]  
 John & Sheila Arpe  
 David & Ann Marie  
 Asadoorian  
 Margaret Avery  
 Edye & Bob Baker  
 Edward Boesel  
 Ralph Chadis  
 Barry P. Chaiken, MD  
 Carmen Chan  
 Paula V. Cortes  
 Robert N. Cory  
 Jon & Kim Davis  
 Judy Dillman  
 Christine Dugan &  
 Frank Graves  
 Elaine Epstein & Jim Krachey  
 Walter Fey & Jan Bergstrom  
 Susan Fliegel, *In Memory of  
 Dr. Harold Smelson*  
 Elaine Fong & Leon Yankwich,  
*In Honor of Janet Spitz*  
 Marjorie & Donald Forte,  
*In Honor of Spiro Veloudos*  
 Sara S. Glidden &  
 Paul A. Perfetti  
 Stephen Gronberg &  
 Carol Houde  
 Robert & Penny Herbert  
 Eva Herndon  
 Rosalind & Herb Hill  
 Ingrid & Michael Hillinger  
 Gordon Holmes  
 Bill & Sandy Horne  
 Paul & Alice Johnson  
 Chris & Joanne Jonhston  
 Eric J. Krupka  
 Gail & Elliott Laffer

Sharen & Andrew Leonard  
 Ronald & Sandra Levy  
 Liberty Mutual Foundation  
 Lois L. Lindauer & Bill Seltz  
 Barbara Low  
 Jorge & Fran Martinez,  
*In Memory of Margarita  
 Damaris Martinez*  
 Annina & Kilmer McCully  
 Richard & Beth McLaughry  
 Esther Messing  
 Louis & Deidre O'Brien Pepi  
 Carol O'Hare &  
 Walter McDonald  
 Frank Neely & Ron Parmakis  
 Daniel Penni  
 Penelope Peoples  
 Andrea & Russel Pergament  
 Bob & Paula Pickett  
 Margaret White Plum  
 Joe Quinn & Diane Juliar  
 Shwetha Ravi  
 Terry & Maggie Rioux  
 Roland W. Roy, *In Memory of  
 Bruce C. McCarthy*  
 Joel Schwartz  
 Andrea Shirley &  
 Joyce Richmond  
 The Ellen L. Simons Fund at  
*The Boston Foundation*  
 Samuel Stern &  
 Charlotte Chase  
 Robert & Leslie Turner  
 Ellen Westheimer  
 Wilson Butler Architects, Inc

**SUPPORTER'S CIRCLE  
 (\$250-\$499)**

Anonymous, *In Memory of  
 Larry Cohen*  
 Anonymous [1]  
 Sydney & Norman Abend  
 James & Elaine Alt  
 Berndt Anderson  
 Sandy & Jim Annis  
 Nancy Anthony  
 Michael Aylward  
 Michael & Kathy Bates  
 Robert & Lei Sun Berk  
 Gina Bernarduci  
 James Berriman  
 John O. Biderman  
 Debbie Bieri  
 Barry Bluestone  
 Garen Bohlin &  
 Diana Sorensen  
 Margaret Brooke  
 Bill & Marian Bruins  
 Janet Burns  
 Judith Butler  
 The Cantafios

Victor & Mary Calcaterra  
 Charles R. Carr  
 Fritz Casselman &  
 Susan Ashbrook  
 Sasha Castroverde  
 Thomas Chesterton &  
 Janice Tilson  
 Chester & Ellen Clark  
 Renate Clasby  
 Leslie Colello  
 James Collins  
 Theodore & Carolyn Colton  
 Ellen Colton  
 Noreen Cooke, *In Memory of  
 Bishop Michael Kenny*  
 Alexandra Dailey  
 Elizabeth de Lima, *In Honor of  
 the deLima family actors!*  
 Paula & Ralph Dinneen  
 Janet Distasio  
 John M. Dugan &  
 Carol Baffi-Dugan  
 Norma Elias & Saul Toby  
 Deanne England  
 Maria E. Epsimos  
 Jane & Arnold Epstein  
 Alain & Rebecca Eudarc  
 Martha Erickson *In Memory of  
 Karen S. Sturges*  
 Lisa & Barry Fireman  
 Philip & Mary Hamilton  
 Anne Exter & Lance Kawesch  
 Mark Farber & Sherry Katz  
 Corey Fitz  
 Elaine & Kevin Foley  
 June Carter & Barbara  
 Fragopoulos  
 Mary M. French  
 Judith Ganz & Lawrence Gray  
 Christopher Gaucher &  
 Roger Ferguson, Jr.  
 David & Karen Gaylin  
 Billy Novick & Barbara Golder  
 Jeffery Gray  
 Ann Green  
 Cathy & Nick Guise  
 J. William Harris &  
 Terry K. Rockefeller  
 Janice & Jim Harvey  
 Vanessa Hayden  
 Peter Haydu &  
 Dona Sommers  
 Bill & Evelyn Herrick  
 Alan Hirshfeld & Sasha Helper  
 David V. Howe  
 Ruth A. Hunter  
 Donald & Nancy Hunton  
 Joseph & Ana Impelizeri  
 Diane Jacobs  
 Clark & Susan Jarvis

Mary & Robert Kahn  
 Janis Kapler  
 Jacqueline Kovacs &  
 Allen Post  
 Tony Koziol  
 John & Jill Larkin  
 Pam LaRue  
 Michelle Lavers  
 Heidi M. Lehner  
 Helen & Warren Lewis  
 Tina Lieu  
 Peter Loewinthan  
 David MacDougall  
 Marge MacEvitt  
 Anne McKinnon &  
 Jeffrey Ferris  
 Lee Martz  
 Constance Matson  
 Glenda Mattes  
 Arthur McRae  
 John & Judith Mitchell  
 Mayo & Daniel Morgan  
 Leslie Nelken  
 M. B. Nelting  
 Tom Norris  
 Courtney O'Connor  
 Nancy Olson  
 Elaine Paster  
 Benjamin & Sylvia Perlman  
 Catherine & Daniel Phillips  
 Florence Poy  
 Sue Prindle  
 Catherine Racer  
 Dennis & Katherine Rieske  
 Timothy Markoe Rivinus  
 Kenneth Roberts  
 Julie Rohwein &  
 Jonathan Aibel  
 Debbie & Allan Roth  
 Roberta Rubin & Don Abrams  
 Donna L. Ryan  
 Sherry & Tom Ryder  
 Kirsten Salpini  
 Ronald Seletsky & Loving  
 Family, *In Honor of the  
 Tewksbury Hospital Staff  
 Heroes!*  
 Douglas Shaheen &  
 James Rodenmacher  
 Zoe Sherman  
 Jacqueline Shina  
 David W. Shuckra &  
 Clifford S. Wunderlich  
 Rita & Harvey Simon  
 Carole & Jack Skowronski  
 Barbara & Alan Smith  
 Marylen Sternweiler  
 Emily & Andrea Stidsen  
 James & Susan Stockard  
 Sandra & Philip Stymfal



- Takeda Oncology  
Eugene & Meredith Thompson  
Jay Thornton  
Jeanne Trubek & Ron Webber,  
*In Honor of Spiro Veloudos*  
Dawn Tucker  
Alexander Turchin  
Beverly & John Wand  
Donald Ward  
Robin Weinberger  
Mary Allen Wilkes  
Sidney & Deanna S. Wolk  
Jerry & Barbara Wood  
Ioannis V. Yannas  
Irma Zarinsky &  
Warren Lackstrom  
Zar-Kessler Family Fund  
Boris & Emma Zbarsky  
Elizabeth & Andrew Zucker
- FRIEND'S CIRCLE  
(\$100-\$249)**  
Anonymus (5)  
Rosalie Abrams  
Joseph & Deborah Aiello  
Miki C. Akimoto  
David Albert  
Cynthia D. Allen  
Megan Allen  
Nathalie Alpert, *In Honor of  
Jennifer Alpert*  
Joel & Judith Alson  
Amazon Smile  
Matthew & Cheryl Anderson,  
*In Memory of Christina D.  
Anderson*  
Cal & Tedford Armistead  
The Arpin Family  
Judy & Bob Azanow  
Paula G. Barta &  
William Lee Roberts  
Tom Beaulieu & Rob Peters  
Carol Becker, *In Memory of  
Ruth Becker*  
Hilary A. Bede  
Keith Bell & Brian Shannon  
Madelyn Bell  
Judith Blatt  
Victor & Iona Bonneville  
Lynn Borkowski  
Susan Britt  
Robert & Marilyn Brooks  
Webb & Jeff Brown, *In Honor  
of Paula Plum*  
Kathleen Calore  
Marty Carlock  
Marlene A. Carr  
Matthew Carr  
Arthur Carver  
Carole Charnow  
Claire Chisholm
- Barbara Cherubini  
David Chosiad &  
Paula Thompson  
Alden W. Clark  
Jonathan Clark  
Ben Cohen & Kevin Wulff  
Katherine Connolly  
Jennifer Coplon &  
Robert Frank  
John Cornwell  
Mr. & Mrs. David Crellin  
Matthew G. Croak, *In Honor  
of Richard & Catherine  
Croak*  
Harold S. Crowley, Jr.  
Sandra Cullison  
Debbi Darling  
Douglas DeFonzo  
Rochelle Dein  
Donald E. Denniston  
Donald R. Dickinson  
Glenn Dodge  
Mary Kay Donovan  
Edward & Monica Driggers  
Peter & Jana Dublin  
Emily Ehrenfeld  
Ron & Zina Eisenberg  
Samuel Ellenport  
Kathleen Engel & Jim Rebitzer  
Sheila Fair  
Bill & Carol Fenniman  
Janet Fidelman  
Jerry Fielder  
Norma Finkelstein &  
Michael Brower  
Sarah Fisher  
Timothy J. Fitzgerald  
Tom Formicola &  
Lenny Goldstein  
Barbara & Marvin Fox  
Debbie Freedman &  
Bob Tripp  
Linda & John Freeman  
Mary Furash  
Sarah Gallivan  
Nancy Garrison  
Paul V. Garrity  
Katherine Gibson  
Edward & Julie Ginsburg  
Glassman Family  
Charitable Fund  
Dr. Stephen Goldfinger  
Boris Goldowsky  
Donald Goldstein  
Linda & Stephen Greyser  
Martin & Betty Greif,  
*In Memory of Margarita  
Martinez*  
Nancy E. Grissom  
Elizabeth Grube
- Ragnhild Gundersen  
Lynn Ann Hajducky,  
*In Memory of Dollina Borella*  
Michael Hall  
Ellen S. & Michael E. Hallor  
The Hamel family, *In Memory  
of Marian Bertone*  
Wendy Bailey Hamilton  
Jay Hanflig & Donna Linden  
Roy Harris & Eileen McIntyre  
Ann Hartstein  
Kalman & Ellen Heller  
Joel B. Hersh  
John & Peggy Heywood  
Julianne Hickey  
Pamela & Peter Hoffman  
William F. Holt  
Beth Houston  
Susan Hunziker  
Shirley & Chuck Hurwitz  
Ann Marie, Jeffrey &  
Moriah Illsley  
Elaine Inker  
Naomi B. Isler  
Preston Green  
Kirk & Fern James  
Dr. & Mrs. Richard B. Janney  
Karl & Christine Johnson  
Frick & Karen Jones  
Cynthia Kagno &  
David Wittenberg  
Bill & Constance Kantar  
Mark G. & Rosalind F. Kaplan  
Ron & Ariel Kappler  
Beverly Kargir  
Rudy Kass  
Patricia Keighley  
Jane Kelley  
Anne Kelly  
Julie & Maryanne King  
Sima Kirsztajn  
Elissa Koff  
Anonymous  
Nancy F. Korman  
Maureen Kruskal  
Bernice Kuca  
Nancy Kurtz  
William & Maureen Lafrance  
Anne Lauriat  
David & Janice Lawrence  
Paul & Maxine LeBlanc,  
*In Honor of Matt Chapuran*  
James Lerner  
Joan M. Levangie  
Elaine P. Levine  
Reuel & Malvina Liebert  
David L. Lindsay  
Margaret Lo  
Tammy Gooler Loeb & Bob  
Loeb, *In Honor of Nina Berk*
- Linda & Jack Lola  
Ann Loudermilk, *In Memory of  
William "Billy Jak" Jakielaszek*  
Sandra & David Lyons  
Charlie MacLeod  
Barbara P. Madden  
Alexis Maharam  
Anne Mahoney  
Jeff Mahoney &  
Aimee Doherty  
David & Kathy Maister  
Mary Maker  
Suzanne Marcus  
Susan Maren  
Judith Marino  
Patricia Mazza  
Deena Matowik  
Diane McCormack  
Kathleen McCormack  
Deborah McElhinney  
Arthur McRae  
James McSweeney  
Lynn McWhood  
Karole Mendelsohn  
Martha Merson  
Eva Mosely  
F. Taft & Anna Murray  
Sally Muspratt  
Linda & Steve Nathanson  
Alexander Nedzel & Susan  
Kruger-Nedzel, *In Honor of  
the Lyric Stage Staff*  
Dr. Linda Nelson  
Leslie Newman  
Debora Nickla  
Sally Nottage  
Linda & Bruce Novak  
Joseph & Anne O'Connor  
Pamela Oliver &  
Mark Whittaker  
Ellen & Steve Parker  
Bob & Jackie Pascucci  
Tom Peckham &  
Ellen Petersen  
Karen Perlow & Dale Place  
Ellen & James Perrin  
Elisabeth Peterson  
Anne & Bruce Philbrick  
Harold Picken  
Joyce Plotkin & Ben Aspel  
Kenneth & Judith Pogran  
Brenda & Ethan Pollack  
Jim Pransky  
Donna P. Prince  
The Estate of Gloria G. Ratti  
Florance Reagan  
Katharine & William Reardon  
David Reiner & Cynthia Eid  
Suzanne Ricco  
Barbara & Del Richmond



Peter Jason Riley	Dick & Dot Santos	Bob & Bobbie Steinbach	Elizabeth Weilbacher
Bruce & Nina Robertson	Dorette Sarachik	Susan & John Strand	Harold Weintraub &
Robert & Mary Rose	Leslie Sargent &	Eugene & Madeline	Mary Thomsen
Carol Rosensweig &	David Roseman	Straussberg	Roseli Weiss & Robert
Charlene Grant	Carl Saslow	Karen Sturges	Winograd, <i>In Memory of</i>
Beth Rosenzweig	Barbara Scafidi	Jane Sturtevant	<i>Doss Wellins</i>
Margaret Ross Link &	Joel Schwartz	John & Nadine Suhrbier	Janice Wester
David Link	Kenneth & Cynthia Scott	Leslie Schwartz	Robie & Jane White
Elizabeth Simon &	Robert Seiler	Judith Sweeney	Esther C. Williams
William Ross	Marci Shaw	Pamela Swing	Sue Wing & Tom Lavin
Sarah E. Rowley	Harvey & Debora Sherman	Cathi Tetreault	Regina Wright
The Ruboy Family, <i>In Memory</i>	Daniel Simpson	Marilyn Tierney	Joan Zahorjan
<i>of Doss Wellins</i>	Ellen & Jay Sklar	Anita P. Turner	Robert & Shirley Zimmerman
Sallie & Bob Runck,	Lauren Sloat	Eleanor Uddo	
<i>In Memory of Bert Weber</i>	William & Margaret Smith	Mary Verhage	
James Pacheco &	Maureen Smotherman	Robert Volante	
Dianne Sanborn	Emmett & Grace Sprecher,	Donna L. Wade	
Dean & Joy Salpini	<i>In Honor of Leo &amp; Karin</i>	Leslie Warshaw, <i>In Honor of</i>	
William & Jacki Santoro	<i>Sprecher</i>	<i>Spiro Veloudos</i>	

**Our thanks to the others listed here who have helped us weather the most perilous storm in Lyric Stage history**

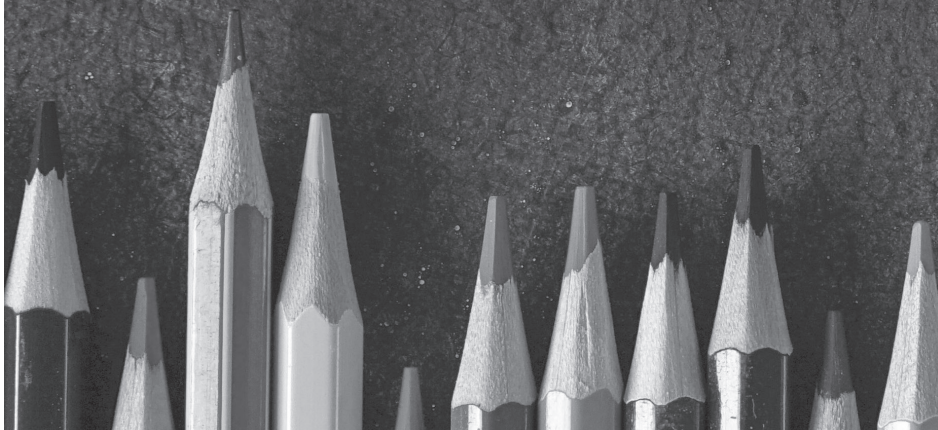
Anonymous [7]	Nancy Barry	Beth Budny	V. David Cooper
Gloria Ackroyd	Anne Baynes	Robert & Carol Bullivant	James Copper
Stefanie Adams	William H. Bean	Carole L. Bundy	Lauren Corcuera
Alan Ades	Laura K. Beasley-Topliffe	Trevor Burnham	Harriet Cort
Jory Agate	Marci Beaudoin	Diane Butkus	Richard & Jane Costa
Hazel Akimoto	Judith Feins & Bruce Bell	Rebecca Butler	Perry Cottrelle &
Susan Albrecht	Katherine Belmont	Jeanine & Vojtech Bystricky	Suzanne L. Robblee
Cynthia D. Allen	Susann Benoit	Marianne Callahan	Dalnesha Craft
Irving & Betty Allen	Margot A. Biggin, <i>In Memory</i>	Donald & Sondra Caplin	Kevin Cranston
Jim & Marie Allen	<i>of Doss Wellins</i>	Marta Carney	James & Linda Crawford
Meredith A. Allen	Priscilla Biondi	Russ & Sandy Carriker	Carolyn Cronin
Susan Allison	Christie Blaine	Sally Casper	Harold S. Crowley Jr.
Sarah Alsayer	Grace Blewer	Fran Charnas	Allison Crump
Deborah J. Alsebai	Barbara Bloom, <i>In Memory</i>	Maryellen Chiariello	Anne Cullen
Annamarie Altman	<i>of Doss Wellins</i>	Koren L. Christensen	Michael Cummings
Diane Amerault	Rhys V. Bowen &	Kourtney Christiansen	Susan Donniskey
Ameriprise Financial	Rebecca Snow	Kristen Ciambrone	Paula Cuozzo
Elizabeth Anderson Conrad	The Bowen-Flynns	Jay S. Clark	Grace Curley
Beth Ann Anderson-Song	Rosemary Boynton	Katie Clark	William D. Curtis
Miriam Marie Ariel	Libby & Peter Bradshaw	Dorothy Clawson	Susan D'Arcangelo
Abigail Arnold	Eric & Kasia Braun	Brenda Cohen	Charley & Elaine Davidson
Julie Arvedon Knowlton	Susan Bregman	Laurence Cohen	Edmund & Judith Dente
Bob & Linda Asher	Bright Funds Foundation	Claire & Oren Cohen	Diane DiCroce, <i>In Memory</i>
Sandra Asher	Izetta Bright	Carole Coleman	<i>of Marian Bertone</i>
Kaley Bachelder	Kathy Brodsky	David Coleman	Chelsea Diehl
Patricia Baker	Margie & Gilbert Brodsky	Scot Colford	Mary L. Dill
Brain Bakofen	Brookline Bank	Gretchen Conklin	Anna Doering
Carol J. Ball	Darlene Brown	Nora Conley	Patty Dolan
Bronwen & Bob Ballou,	Elizabeth Brown	Stephen Conley	Paul Donovan
<i>In Memory of Doss Wellins</i>	Tamar Brown	Mary Conlon	Philip Doohar
Ken Baltin	Joan Bruck	Sinead Conlon	Row W. Doolittle
Ruth Barnes	Karen Bryant, <i>In Honor of</i>	Michael Connolly	Robert Dorer
Leigh Barrett	<i>Allyson Brown</i>	Denise Conry	Richard S. Doring

## RESOURCES FOR

MR.  
PARENT

While the initial draw of producing *Mr. Parent* stemmed from sharing the true-life stories of our collaborator Maurice Emmanuel Parent, the story of *Mr. Parent* also asks the audience to question the inequities baked into our educational system. We wanted to provide audiences

with opportunities to contemplate and act upon the material after the final bow. Working with Neema Avashia, the production's Public Education Consultant, we have created a list of resources which are accessible through the QR code on this page and at [www.lyricstage.com/show-item/mr-parent/](http://www.lyricstage.com/show-item/mr-parent/). We hope you find these resources to be provocative and helpful in continuing your conversation about this play outside of 140 Clarendon Street.



- Joan Doucette  
 Thomas Doucette  
 Nancy Doyle  
 Brendan Drischler  
 Peter Dudeney  
 Charles Q. Duncan  
 Frank Dunn  
 Richard Duran  
 Nancy Eagen  
 William J. Ehmann, *In Memory of Elvira Ehmann*  
 Sara Elkin  
 John Elliott  
 Lee Emerson  
 Kathleen Emrich  
 Carol & Lewis Epstein  
 Terry & Ann Esvelt  
 Errol & Joan Ethier  
 Allison Evans  
 Tasha Fain  
 Linda Faldetta  
 Paul E. Fallon  
 Phyllis & Sumner Fanger  
 Patricia Feeley  
 Ellen Feldman  
 Fran & Gary Feldman  
 Martha Ferko  
 Lorraine Fine  
 Barbara Finegan  
 Susan Fish  
 Mary K. Fitzsimmons  
 Birllyn D. Flint  
 Rebecca Flint  
 Colleen Ford  
 Merrill Forman  
 David M. Fram  
 Diane Francis  
 Frances Francis  
 James Franco  
 Rick Frank  
 Ellen Frechette  
 Rita Freuder  
 Alan & Deborah Friedman  
 David Fristrom  
 Frank Furnari  
 Terrance J. Gaetz  
 Leslie Garber  
 Lyn Gardner  
 Richard Garick  
 Helen L. Garrett  
 Ann Marie & Denise Geanisis, *In Memory of Liz Kastner*  
 Jill Geisler  
 Lisa Gemellaro  
 Judith Gentile  
 Roberta Gerson  
 Nancy Gertner  
 Ernestine Gianelly  
 Katherine Gibson
- Theresa Girard  
 Lori Glaser-Korn  
 Marilyn Glinner  
 Steve Godfrey  
 Hon. Jessica Going  
 Jon Goldberg  
 Maxine & Don Goldberg  
 Janet Goldenberg  
 Eve Goldfarb  
 Phyllis & Leon Goldman  
 Katrina Goldowsky-Dill  
 Steven Gordon  
 Sheila Gorman  
 Jonathan H. Grand  
 Gail & Roberto Grande  
 Brian Greene  
 Rhoda Greenspan  
 Sandy Greenwald  
 Daniel W. Greenwood  
 Elizabeth Greenwood  
 MJ Grein  
 Hildy & Richard Grossman  
 Nancy Grossman  
 Peter & Beth Guenette, *In Memory of Margarita Martinez*  
 Susan Guiraudet  
 Adria Gunter  
 Carrie Guscott  
 Audrey Haas  
 Lyn C. Hadden  
 Janet Haines  
 Kristin Hall  
 Todd Hamelin  
 Judi Hansjon  
 Barbara Hanson  
 Virginia Harlan  
 Kelly Harris  
 Lawrence & Shirley Hartman  
 Kari Haworth  
 Alison J. Hay, *In Honor of Erica Spyres*  
 David Henkelmann  
 Daniel Herlihy  
 Sherry Herzog & David Ness  
 Patricia Hess  
 Thomas & Elizabeth Hess  
 Lawrence Hickey  
 Janis L. Higgins  
 Carol Hillman  
 Janet Hirsch  
 Brian Hirt  
 Susan M. Hoar  
 Edward & Pamela Hoffer  
 Duncan Hollomon  
 William Horne  
 Beth Houston  
 Bonnie Howard  
 Mary Ann Hubbard
- Jane Hucks  
 Dr. Annie-May Hugo  
 Marie F. Hurd  
 Ellen Hurley  
 Christina Ifill  
 Lois Jacobs  
 Mary-Elaine Jennings  
 Susan Lucille Johansen  
 Jalyn Jones  
 Shannon Lee Jones  
 Steven Ladd Jones  
 Ashley Judge  
 Bill Kadish & Marie Hobart  
 Joni Karon  
 Diana & Howard Kassler  
 Robin & Scott Katzman, *In Memory of Marian Bertone*  
 James M. Keating  
 Dawn Keene  
 Jeff A. Keilson  
 Chelsea Kendall  
 Matthew Kennedy  
 Fiona & Michael Kerr  
 Joe Kesselman  
 Ginny Kiefer  
 Marion Kilson  
 Mary Klatt  
 Max Klau  
 Rebecca Klein  
 Joanne Klys  
 Julia Knowles  
 Charlotte Knox & Ken Stein  
 Amelia Koch  
 Andrew Charles Koines  
 Frederick & Carol Kotler  
 Ellen Kranzer  
 Meenakshi Kumar  
 Lori L'Italiani  
 Jacqueline M. LaBerge  
 Janet & Ronald Lamkin  
 Kim Lamoureux  
 Lisa Leigh Landsverk  
 Anna Lannstrom  
 Mary Lauve  
 Margaret Lavoie  
 Ginger Lazarus  
 Bernadette M. Leber, MD  
 Alice & Charles Leidner  
 Elizabeth Lennox  
 Gail Leondar-Wright  
 Marianne Lepp  
 Cynthia LeVine  
 Paula Levine  
 Scott Levine  
 Barry & Nancy Levy  
 Diane Levy  
 Debbe & Christopher Lewis  
 Rebecca & Vladimir Liberman  
 Elizabeth Lieberman
- Erica Lindamood  
 Mark Linsenmayer  
 Sonia Lipetz  
 Stephen & Carolyn Locke  
 Michael Loconto  
 Alex Lonati  
 Hilda Lopez  
 Cynthia G. Lovell  
 Marya Lowry & Robert Walsh  
 Rachel F. Lucas  
 Simon Lucas  
 Claron Lunt & Thomas Brien  
 Linda Lynch & Dan Flaherty  
 David & Sandra Lyons  
 Diane Tavitian  
 Kathryn MacDonald  
 Pauline MacDonald  
 Anita L. MacDonnell  
 Kathleen Mackenzie  
 Household  
 Tracy MacNeal  
 Matthew E. Maltzman  
 Richard & Candace Mandel  
 Christine Maney  
 Ronni Marshak  
 Joe Mathis  
 John Mathis  
 Catherine L. Mazza  
 John Mazzotta  
 Gretchen McClain & Todd Schatzki  
 Susan McCombs  
 Sandra McDonald  
 Will McGarrahan  
 Hirschel McGinnis  
 Lori A. McGrath  
 Carolyn McIver  
 Carol A. McKeen  
 Mr. & Mrs. Everton McKie, *In Memory of Margarita Martinez*  
 Rosa Maria McLaughlin  
 Diane McLean  
 Cheryl & Don Fraser  
 Karen McNary  
 Julia McVay & Stanley Gross  
 Jessica Means  
 Joseph & Evy Megerman  
 Lana Barbara Melnik  
 Mel & June F. Michaels  
 Amy Michelson  
 Joann Miles  
 Marie G. Miller  
 Peggy Vagts & Mark Miller  
 Stan & Sally Miller  
 Catherine Minnetyan  
 Ruby Mintz  
 Howard & Rena Mirkin, *In Honor of Diane Miller*

- Brett & Julia Miwa  
 Glen & Ilyse Mohr  
 Michael J. Moran, *In Memory of Francis D. & Marcella A. Moran*  
 Douglas L. Morgan  
 Catherine Moritz  
 Patty Morrison  
 Robert Morrisette  
 Shelby Morss  
 Austen Moyer  
 John S. Moynihan  
 Lisa Mullins  
 Beth Munn Griffin  
 Elizabeth Murray  
 Roberta Myers & Steven R. Baturin  
 Judith Myerson  
 Nael Nacer  
 Liz Nania  
 Greg Nash  
 Erin Mercuerio Nelson  
 Ryan Newberry & Deirdre Callahan  
 Charlie & Christine Nichols  
 Nancy Nitikman  
 Atheline W. Nixon  
 Anne Noble & Valerie J. Grande  
 Susanna Noon  
 Cathy Nowak  
 Katherine O'Connor  
 Adedapo Odetoyinbo  
 Deji Odetoyinbo  
 Elaine Odetoyinbo  
 Olusegun Odetoyinbo  
 Oluwole Odetoyinbo  
 Rolake Odetoyinbo  
 Cassandra Spratling  
 Linda Okun  
 Luiza Olah  
 Carlos Ordonez  
 Dr. Bert Ouellette  
 Annemarie Pacheco  
 Robert Panessiti  
 Maurice Parent  
 Dr. Lynn Parker  
 Barbara Ann & Barrie Paster, M.D.  
 Elaine & Joe Paster  
 Dorothy Patton  
 Greg Peloquin  
 Ellen M. Penso  
 Gamalia Pharms  
 Patricia Pierce  
 Linda Pierre  
 Kathryn Pile  
 Dr. Joseph J. Plaud  
 Paula Plum & Richard Snee  
 Pier Lamia Porter  
 Patricia Potter  
 Helen C. Powell  
 Robert Prezioso  
 Suzanne Priebatsch  
 Gordana Rabrenovic  
 Lisa Rafferty  
 Nancy Rappaport  
 Doug Raymond  
 Fran Regan  
 Michael Remavich  
 Caroline & Terry Rice  
 Susan Richards  
 Larry Peltz & Nancy Riemer  
 Judy Riggs  
 Erick E. Rios  
 Jack Riter  
 Lindsay Roberts  
 Mona Roberts  
 Paula G. Barta & William Lee Roberts  
 Susan & Charles Rohrbach  
 Janet B. Rosen  
 Leslie Rosenberg  
 Joan Rosenberg  
 Judith Rosenberg  
 Mary Rosenfield  
 Carol & Wally Rowe  
 Ryan Ruopp  
 Mary Douglass Ryan  
 Alycia Nicole Sacco  
 Richard Sacks  
 Arlene Sampson  
 Julie & Cruz Sanabria  
 Lisa Savini  
 Ms. Mary C. Savini  
 Carolyn Saxon-Ruccio  
 Doris Schannen  
 Caroline S. Schastny  
 Elizabeth Schneider  
 Alan & Leslie Schwartz  
 Mrs. Barry Seidman  
 Elizabeth Seitz & Jorge Abellas-Martin  
 Amanda Selvidge  
 Harry & Nancy Senger  
 Gaylis Shakir  
 Norma & Benson Shapiro  
 Sarah & Richard Shaver  
 Shell Oil Co. Foundation  
 Hon. Julius Sheppard  
 Patricia Shields  
 Paula M. Shortell  
 Cynthia Shulman  
 Lynn Shyevitch  
 Angela Siciliano  
 Barbara Sigel  
 Margery Silver  
 Bert Silverberg  
 Susan & Joseph Silverman  
 Linda & Peter Silverstein  
 Ellen Simons  
 Sophie Sinclair  
 Beth Singer  
 Damon & Laurie Singletary  
 Laura Sitterley  
 Mary Small  
 Doug Snow  
 Paul Soper  
 Madelyn Sorensen  
 Bryn Sowash  
 James Spall  
 Alex Speir  
 Monical Spencer  
 Deborah Sperling  
 Sarah Spillane  
 Ashley Spratling  
 Dion Spratling  
 Michele Spratling  
 Roderick Spratling  
 Terry Spyrres  
 Kathy St. George, *In Memory of Theresa St. George*  
 Chris Stanley & Taurus Bennett  
 Ron Steese  
 John Stella  
 Masha Sten-Clanton  
 Barbara Stier  
 Shannon Stiles  
 Gloria Stinson  
 Robert Stinson  
 Cassidy Stirtz  
 Marilyn E. Stone  
 Helene Sullas-Huggins  
 Judith Swanson  
 Mackenzie Sweet  
 Jane Swett  
 Mary Szewczuk, *In Memory of Andrew R. Szewczuk*  
 Michael Tabak & Roxanne Kelber  
 Cecile Tagliani  
 Joann Takehara & David Sanford  
 Barbara Talcott  
 Marcia Tanur  
 Temple Israel  
 Donna Tesiero  
 Drs. Robert & Kathleen Thies  
 Diana & Donald Thomas  
 Jeffrey Thomson & David Janero  
 Halima Tiffany  
 Susan & David Titus  
 Geraldine Tolman  
 Maura B. Troiano  
 David & Elizabeth Torrey  
 Angela Tramontano  
 Parker Traphagen  
 Carolyn Trees  
 Kira Troilo  
 Priscilla Troupe  
 Nancy & Bob Tucker  
 Robert Vanasse  
 Joshua Veilleux  
 Darius Vines  
 Lisa Vouras  
 Margery Wadness  
 Susan & Devin Waldman  
 Katharine Wall  
 Dianne Walsh  
 Marcia Walsh  
 Laura Walters  
 Mr. Ronald Ward  
 Linda Warner  
 Hazel & Jordan Warnick  
 Joan Warnshuis  
 Gillian Watson  
 Diana R. Watson-Phillips  
 Susan B. Wedda  
 Irene & Lynn Weigel  
 Lyn Weiner  
 Joan & Jerome Weinstein  
 Laura & Neil Weiser  
 Cheryl Weisman-Cohen  
 Jeannette O. Welch  
 Ben Wells  
 Carol Whelton  
 James David White  
 Sheila Willard  
 Wayne J. Villemez  
 Penny Wingate  
 Jean Wood  
 Karen M. Wood  
 Arnie & Sally Wright  
 R. Spencer Wright  
 Margaret Yoon  
 The Young Company at Greater Boston Stage  
 David M. Young  
 The Zar-Kessler Family Fund  
 Massood Zarrabian  
 Ruth Zax  
 Linda & Jerrold Zindler

# THE LYRIC STAGE

The Lyric Stage Company of Boston produces and presents live theatre in Greater Boston with an intimate approach that promotes inclusivity and connection. The Lyric Stage leads an effort to integrate live theater and theater education into the lives of all residents of greater Boston.

Founded in 1974 by **Ron Ritchell** and **Polly Hogan**, the Lyric Stage is Boston's oldest resident theatre company. After establishing a loyal following on Charles Street, Ron and Polly led a successful 1991 campaign to create the Lyric Stage's current home on Clarendon Street. Polly was the chief negotiator for the NEAT (New England Area Theatres) contract, which made it easier for local producers to hire members of Actors Equity Association, the union for actors and stage managers.

In 1998, **Spiro Veloudos** was appointed Producing Artistic Director. During his tenure, he continued Ron and Polly's commitment to local artists; with few exceptions, the theatrical artists that work at the Lyric Stage live in the Greater Boston area. Spiro also established a reputation for staging large musicals in the Lyric Stage's modest playing space, including a signature Sondheim Initiative, which covered 10 musicals over 20 years.

In 2016, the Lyric Stage opened Clarendon Hall, a year-round rehearsal space. Clarendon Hall is available at a subsidized rate to members of the Boston Dance Alliance and other arts organizations and individuals.

Theatre-based education has been a core of the Lyric Stage's mission since its founding days. In 2019, the Lyric Stage merged with City Stage Co. and its expanded education programs include performances at the Children's Museum of Boston, teaching artists working in classrooms in the Boston Public Schools, and the Lyric First Page playwriting festival for students.

Following Spiro's retirement in 2019, the board appointed **Matt Chapuran** as Executive Director, and shortly after, **Courtney O'Connor** was named Artistic Director. Their partnership centers Lyric Stage in Boston's theatrical community, introduces live theatre to new audiences, and promotes new theatrical voices in Boston and nationwide.

## LYRIC STAGE COMPANY OF BOSTON STAFF

**Matt Chapuran**, Executive Director

**Courtney O'Connor**, Artistic Director

**Kate Casner**, Digital Marketing Associate

**David D'Agostino**, Production Manager

**Heather Darrow**, Director of Marketing

**Sarah Leaf-Herrmann**, Director of Development

**Chandra Pieragostini**, Associate Director of Education

**Michele Proude**, KidStage Manager

**Katherine C. Shaver**, Special Projects Manager

**Spiro Veloudos**, Producing Artistic Director Emeritus

### Box Office & Front of House:

**Josh Veilleux**, Box Office Manager

**Layne Alexandra**, **Sivan Amir**, **Elizabeth Carsley**,

**Maia Cataldo**, **Emily Collins**, **Megan Jepsen**, **Alyssa Lara**,

**Kat O'Connor**, Box Office & Front of House Managers

**Meagan Dobyne**, **Michelle Garcia**, **Anthony Lafornera**,

**Leo Lukaszevich**, **Linda Shewokis**, **Braelyn Spitzer**,

Box Office & Front of House Assistants

### Administrative Assistants:

**Emma Goldman**, **Kandyce Whittingham**, Artistic

**Chandler David**, **Emeline Shepard**, Development

**Marieska Luzada**, **Michael Rocco**, **Ava Straccia**,

**Julia Thorn**, Marketing

**Elizabeth Albahary**, **Gabriela Hernandez**, Production

### Stage Managers 2021/22 Season:

**Sarah Bord**, **Rose Mancuso**, **Nerys Powell\***,

**Elizabeth Yvette Ramirez\***, **Brian Robillard\***

### Design:

The scenery for this production was constructed by

**Wooden Kiwi Productions, LLC.**

**Melissa Wagner-O'Malley**, Graphic Design

**Belinda Thresher**, Abella Publishing Services

\*Denotes member of Actors' Equity Association



I love *wbur* because...

**“It’s my compass  
to the truth.”**

**wbur**

**npr**

