

**LYRIC
STAGE** **BOSTON**

SEP 19 - OCT 19

LyricStage.com | 617.585.5678

Follow us!   

**AN AMERICAN CLASSIC
FOR OUR TIME.**

OUR TOWN

BY **THORNTON WILDER**

DIRECTED BY **COURTNEY O'CONNOR**



LYRIC
STAGE BOSTON

NOV 14 - DEC 21

LyricStage.com |   



A SHERLOCK CAROL

BY MARK SHANAHAN

DIRECTED BY ILYSE ROBBINS

2025/26 SEASON SPONSORS: Tim & Linda Holiner | Diana Humphrey | Paul Kastner | Sharon & John Parisi

PRODUCTION SPONSORS: Nina & Don Berk



The Lyric Stage Company of Boston

Courtney O'Connor Producing Artistic Director | Alex Chisholm Managing Director

presents

OUR TOWN

BY
THORNTON WILDER

DIRECTED BY
COURTNEY O'CONNOR°

Scenic Design, **Shelley Barish**
Costume Design, **Rachel Padula-Shufelt**
Lighting Design, **Deb Sullivan****
Sound Designer, **Andrew Duncan Will**
Props Artisan, **Lauren Corcuera**
Production Stage Manager, **Nerys Powell***
Assistant Stage Manager, **Lucas Bryce Dixon***

FEATURING

**Thomika Marie Bridwell*, Amanda Collins*, Josephine Moshiri Elwood*,
Dan Garcia, Jesse Garlick, De'Lon Grant*, John Kuntz*, Jacob Thomas Less,
Will McGarrahan*, Robert Najarian*, Darren Paul, Kathy St. George***

Lyric Stage's 2025/26 Season Sponsors:

Tim & Linda Holiner | Diana Humphrey | Paul Kastner | Sharon & John Parisi

Production Sponsor: Ronald Sudol

Director Sponsors: James & Judith Barr

Cast Sponsors: Gretchen & Sam Shubrooks

OUR TOWN © 1938, 1957 The Wilder Family LLC
Copyright agent: Alan Brodie Representation Ltd
www.alanbrodie.com

The video and/or audio recording of this performance by any means whatsoever is strictly prohibited.

The Lyric Stage Company of Boston operates under the NEAT Agreement with Actors' Equity Association and is a member of NEAT (The Producers' Association of New England Area Theaters).

The Lyric Stage Company of Boston is supported in part by a grant from The Massachusetts Cultural Council, a state agency, and The Boston Cultural Council, a local agency which is funded by The Massachusetts Cultural Council, administered by the Mayor's Office of Arts, Tourism, and Special Events.

*Member of Actors' Equity Association (AEA) | ** Member of United Scenic Artists, Local USA 829 | °Member of Stage Directors & Choreographers Society (SDC) | °AFM Local 9-535



FROM THE PRODUCING ARTISTIC DIRECTOR



Dear friends,

I truly mean it when I say — how are we already here? Honestly, it feels like just yesterday I was writing the welcome note for our beautiful production of *Hello, Dolly!*, and now here I am, wrapped in a sweater and welcoming you to the start of our 2025/26 season.

It also feels like just yesterday I was 17 years old, reading *Our Town* for the first time for my senior year English class.

Time is tricky like that. It bends and twists and comes round again. And as the hands of the clock move ever forward, I find myself filled with wonderment at how it plays with us. Because when I was reading the play for the first time, I remember clearly thinking to myself, “this is a huge barbaric yawp” (sorry, *Dead Poets Society* was very big) — and that I was too young to appreciate it. Honestly, it felt like my future self was begging me to wait, promising me that time would grant me a better understanding than I could comprehend was even possible.

Because the truth is, I was the me I am now even then. Each of us carries so much of who we were, who we are, and who we are yet-to-be at all times. In truth, I still feel like that 17-year-old girl, sitting in her classroom, waiting and wanting to understand the world around her and to see what her life would become. Because I am still her. And simultaneously, I look at my hands and the wrinkles they fast are acquiring, and I see the hands of my grandmother — and know where I’m heading.

There’s a beauty and a sorrow in giving over to time — in accepting there will never be as much as we would like and yet still fighting ourselves to slow down and appreciate it. With a kind truthfulness deeply native to New Englanders, *Our Town* pushes, prods, and asks us to keep fighting that fight. Deep down, we know that time is one of if not the most precious gift we are given. Thank you for sharing some of your time with us.

All my best,

A handwritten signature in cursive script that reads "Courtney O'Connor".

Courtney O'Connor,
Producing Artistic Director

CAST

Thomika Marie Bridwell*	Mrs. Gibb
Amanda Collins*	Mrs. Webb
Josephine Moshiri Elwood*	Emily Webb
Dan Garcia	George Gibbs
Jesse Garlick	Howie Newsome/Joe Stoddard/Mr. Carter/Man From Among the Dead Man
De’Lon Grant*	Editor Webb
John Kuntz*	Professor Willard/Simon Stimson
Jacob Thomas Less	Joe Crowell, Jr./Si Crowell/Sam Craig
Will McGarrahan*	Stage Manager
Robert Najarian*	Doc Gibbs
Darren Paul	Constable Warren/Wally
Kathy St. George*	Rebecca/Mrs. Soames/Woman in Balcony/Woman From Among the Dead

**Denotes member of Actors’ Equity Association*

INTERMISSION

One 15-minute intermission between Act I and Act II.



LYRIC
STAGE

BOSTON

GET THE LATEST SCOOP

and all the inside info
by joining our email list!

Sign up today!



Aimee Doherty and cast in *Hello, Dolly!* (2025)

MARK S. HOWARD

SIGN UP FOR A TOUR &
TRIAL WORKOUT HERE!



GET YOUR FITNESS JOURNEY STARTED TODAY!

JOIN THE LYNX FAMILY FOR 15% OFF!

USE CODE "OURTOWN15" AT CHECKOUT

- FITNESS CLASSES
- PERSONAL TRAINING
- FULL SWING GOLF SIMS
- SAUNAS
- 2 TURF AREAS & MORE!

Lynx
FITNESS CLUB

64 ARLINGTON ST. BOSTON, MA 02116

TRIDENTBOOKSCAFE.COM

338 NEWBURY ST

FIND YOUR NEXT READ 

@ *Trident Booksellers and Cafe*

BOOKSTORE

CAFE

EVENT SPACE



Thomika Marie Bridwell* (Mrs. Gibbs) – Lyric Stage: *Crumbs from the Table of Joy*. Gloucester Stage Company: *The Garbologist*. Actors' Shakespeare Project: *A Midsummer Night's Dream*. The Alliance Theater/The Huntington/Front Porch Arts Collective: *Fat Ham*. The Huntington: *Joy and Pandemic*. Front Porch Arts Collective/The Huntington: *K-I-S-S-I-N-G*. Front Porch Arts Collective: *Chicken and Biscuits*. Regional: Plays In Place: *A Light Under the Dome*. Hanover Theater: *A Christmas Carol*. SpeakEasy Stage Company: *BLKS*. Boston Theater Company: *A Midsummer Night's Dream*. Company One/ART: *Miss You Like Hell*. Praxis Stage: *Coriolanus* and *For Colored Girls Who Have Considered Suicide/When the Rainbow Is Enuf*. Thomika is Elliot Norton Award-nominated and a member of the 2023 Class of The British American Dramatic Academy MIO Program. Instagram: @Thomika_Marie_Bridwell | Facebook: ThomikaBridwell



Amanda Collins* (Mrs. Webb) – Lyric Stage: *The Thanksgiving Play*. Boston: Lyric Stage, The Huntington, Merrimack Repertory Theatre, Commonwealth Shakespeare Company, Boston Playwrights' Theatre, Gloucester Stage, Wheelock Family Theater, Central Square Theatre, Plays In Place, Cape Rep, Wellfleet Harbor Actors Theater. Regional: The Outfit (NYC) and American Stage in Florida. She was a founding member of Harbor Stage Company and won an Elliot Norton Award for her performance in Merrimack Rep's *Miss Bennet: Christmas at Pemberley*. Television: *Olive Kitteridge*, *Castle Rock*, *Boston's Finest*. Film: *Sea of Trees*. Amanda is a proud member of Actors' Equity and SAG-AFTRA.



Josephine Moshiri Elwood* (Emily Webb) – Lyric Stage: Debut. Trinity Repertory Company: *Someone Will Remember Us* (Nadje, Wafaa). Actors' Shakespeare Project: *Emma* (Emma), *Othello* (Desdemona), *God's Ear* (Lanie). Gloucester Stage: *Wish You Were Here* (Salme). The Huntington/SpeakEasy Stage Company: *The Band's Visit* (Julia). The Huntington: *Prayer for the French Republic* (u/s Elodie, u/s Molly). SpeakEasy Stage Company: *English* (Elham), *People, Places, & Things* (Charlotte), *Hand to God* (Jessica), *The Whale* (Ellie). Central Square Theater: *Vanity Fair* (Becky Sharp). Greater Boston Stage Company: *Onegin* (Olga), *Gabriel* (Lily). Commonwealth Shakespeare: *Old Money* (Caroline/Mary). Walking the dog Theatre: *The Cherry Orchard* (Anyia), *Long Ago and Far Away* (various). Film: *The Immigrant*. Television: *Nos4A2*. Josephine holds a BFA in Acting from Emerson College.



Dan Garcia (George Gibbs) – Lyric Stage: *Noises Off* (Tim Allgood), *Ken Ludwig's The Game's Afoot* (Simon Bright), *The Play That Goes Wrong* (Jonathan). Actor's Shakespeare Project: *A Midsummer Night's Dream* (Oberon). Moonbox Productions: *The House of Ramon Iglesia* (Julio Iglesia). The Gamm Theatre: *Describe the Night* (Feliks), *A Midsummer Night's Dream* (Philistrate/Cobweb), *A Lie Agreed Upon* (Townsperson). Boston Theatre Marathon XXV: *Tommy and Mary Spell Canajoharie* (Tommy). Dan is a proud alumnus of The Gamm Theatre's fellowship program. Special thanks and all my love to Elizabeth for all of the endless support!



Jesse Garlick (Joe Stoddard/Howie New-some/Mr. Carter/Man From Among the Dead) – Lyric Debut. New York: Potomac Theater Project: *Good*. Ars Nova: *Who Would Be King*. International: *Assembly*. Festival: *Yellow Bird Chase*. Regional: The Huntington/SpeakEasy Stage Company: *The Band's Visit* (Papi). Central Square Theatre: *A Christmas Carol* (Bob Cratchit), *Journey to the West* (Tripitaka), *Arcadia* (Captain Brice). New Repertory Theater: *Good* (Doctor), *Assassins* (Ensemble). Liars and Believers: *Yellow Bird Chase* (CapCap), *A Story Beyond* (Slava), *Who Would Be King* (Jonny) *Don't Open This* (Rogue). Brown Box Theater Project: *Hamlet* (Hamlet), *As You Like It* (Jaques). Jesse is the Education Director of Liars and Believers in addition to being a faculty member with the Boston Ballet School. MFA: ASDS. BFA: BU.



De'Lon Grant* (Mr. Webb) – Lyric Stage: *Big River*, *Superior Donuts*, *25th Annual Putnam County Spelling Bee*. Broadway: *Come From Away*. National Tours: *Jersey Boys*. Regional: Gloucester Stage: *The Glass Menagerie*. Actors' Shakespeare Project: *A Midsummer Night's Dream*, *Troilus and Cressida*, *Cymbeline*. SpeakEasy Stage Company: *Ain't No Mo'*, *Pru Payne*, *A Strange Loop*, *A Case for the Existence of God*, *The Scottsboro Boys*. The Huntington/Studio Theatre: *Invisible Man*. New Jersey Repertory Theatre: *Welcome to Matteson*. The Wit Theatre: *Douglass*. Arkansas Shakespeare Theatre: *Big River*, *Richard III*. New Repertory Theatre: *And World Goes Round*, *Passing Strange*, *Dessa Rose*. Central Square Theatre: *Harriet Jacobs*. Film: *Come From Away*, *Apart*, *Ghost Light*, *Surrogates*. De'Lon hosts the podcast *Lemme Fix It!* and is an Assistant Professor of Theatre at The Boston Conservatory. Instagram: @thedelondotcom



John Kuntz* (Professor Willard/Simon Stimson) – Lyric Stage: *ART* (Marc), *The Baltimore Waltz* (Carl), *Never the Sinner* (Nathan Leopold), *The Comedy of Errors* (Antifolus of Ephesus), *Fully Committed* (40 Roles), *The Mystery of Irma Vep* (Jane,

et al). *ART: Copenhagen* (Heisenberg), *The Lily's Revenge* (The Poppy), *The Communist Dracula Pageant* (Minister of Defense, et al). *The Huntington: The Hotel Nepenthe* (The Groom, et al), *Betty's Summer Vacation* (Voice #1). Commonwealth Shakespeare Company: *As You Like It* (Touchstone), *Twelfth Night* (Sir Andrew), *Henry V* (Fluellen), *Hamlet* (Guildenstern/Osric), *The Tempest* (Trinculo), *Macbeth* (The Porter) and others. SpeakEasy Stage Company: *The Prom* (Barry), *People, Places & Things* (Paul/Dad), *The Whale* (Charlie) among others. Central Square Theatre: *Frankenstein* (Victor), *The Caretaker* (Aston), *Hysteria* (Salvador Dali) among others. Director: *Blasted* (Off the Grid Theatre Co). John is the author of 15 full length plays including *The Hotel Nepenthe*, *The Salt Girl* and *Necessary Monsters*. He is the recipient of five Elliot Norton Awards and is a Professor at the Boston Conservatory at Berklee and a Lecturer in Theatre, Dance & Media at Harvard University.



Jacob Thomas Less (Joe Crowell, Jr/Si Crowell/Sam Craig) – Lyric Stage: *Assassins* (John Hinckley Jr.); Sullivan Rep: *Steel Pier* (Happy McGuire), *A Little Night Music* (Henrik Eggerman), *Hairspray* (Fender/Swing); Umbrella Stage Company: *The Full*

Monty (Ethan Girard) Greater Boston Stage Company: *All is Calm* (w/s Ensemble); Moonbox Productions: *Glory* (Ensemble). Jacob is thrilled to be back at Lyric Stage, performing with this all-star cast! Big shout out to their friends and family for being an incredible support system. Keep showing up for the arts and supporting your local theater community.



Will McGarahan* (Stage Manager) – Lyric Stage: *Preludes*, *The Book of Will*, *Agatha Christie's Murder on the Orient Express*, *The Little Foxes*, *Souvenir*, *Light Up the Sky*, *Into the Woods*, *Company*, *Death of a Salesman*, *The Temperamentals*. Speak-

Easy Stage Company: *A Man of No Importance*, *The View Upstairs*, *Casa Valentina*, *Next Fall*, *The Drowsy Chaperone*, *Five by Tenn*, *Elegies: A Song Cycle*, *A New Brain*. Greater Boston Stage: *Founding F%#lers*, *Being Earnest*, *Mame*. New Repertory Theatre: *The Normal Heart*. *The Huntington*:

actors' shakespeare project

MACBETH

BY WILLIAM SHAKESPEARE
DIRECTED BY CHRISTOPHER V. EDWARDS

OCT 2-26 Mosesian Center for the Arts
321 Arsenal St
Watertown, MA 02472

www.actorsshakespeareproject.org

THE UMBRELLA
ARTS CENTER

THE COUNTER

SEP 28 - NOV 9
PREVIEWS: SEP 26 & 27

AN EVERYDAY CONVERSATION CAN CHANGE YOUR LIFE
BY MEGHAN KENNEDY | DIRECTED BY ALEX LONATI

THE COUNTER IS PRESENTED BY SPECIAL ARRANGEMENT WITH BROADWAY LICENSING, LLC,
SERVICING THE DRAMATISTS PLAY SERVICE IMPRINT. WWW.DRAMATISTS.COM

40 STOW ST CONCORD, MA | THEUMBRELLAARTS.ORG

A Raisin in the Sun. Wheelock Family Theater: *A Year with Frog and Toad*. Umbrella Stage Company: *Network*, *The Fully Monty*. The Nora: *A Moon for the Misbegotten*, *Buried Child*. Gloucester Stage: *The Wind in The Willows*, *Happy Days*. Will has received an Elliot Norton Award and several IRNE awards.



Robert Najarian* (Doc Gibbs/ Movement & Intimacy Consultant) – Lyric Stage: *The Treasurer*. New York: Punchdrunk/Emursive: *Sleep No More*. Pan Asian Repertory Theater: *Daybreak*. Shelter Theater: *Macbeth*. Regional: American Repertory Theater:

Sleep No More. Purple Rose Theater Company: *Talley's Folly*. Adirondack Theatre Festival: *Dial M for Murder*. New Repertory Theatre: *The Kite Runner*. Central Square Theatre: *Copenhagen*, *Einstein's Dreams*. Theater at Monmouth: *Intimate Apparel*, *Hamlet*. Evet Arts Chicago: *Trajectories*. SpeakEasy Stage Company: *Take Me Out*. Charles Street Playhouse: *Shear Madness*. Washington National Opera: *Don Giovanni*. Former faculty at University of Michigan, Boston University, College of the Holy Cross, and Harvard University. MFA: The Shakespeare Theatre's Academy for Classical Acting at the George Washington University. BA: Bowdoin College. Union Member: AEA, SAG-AFTRA, SDC. His book *The Art of Unarmed Stage Combat* is available through Routledge. robertnajarian.com



Darren Paul (Constable Warren/Wally) – Lyric Stage: *Urinetown: The Musical* (Hot Blades Harry), *Assassins* (Ensemble). Greater Boston Stage Company: *Guys & Dolls* (Harry The Horse), *All Is Calm: The Christmas Truce of 1914* (Swing). God is good. Thankful for

his friends and family, and Mis, whose love and support are immeasurable. Instagram: @mistadpmc



Kathy St. George* (Rebecca/Mrs. Soames/ Woman in Balcony/Woman from Among the Dead) – Lyric Stage: *Urinetown: The Musical*, *The Drowsy Chaperone*, *Gypsy*, *Sister Act*, *Follies*, *Light Up the Sky*, *Blithe Spirit*, *Adrift in Macao*, *Laughter on The 23rd*

Floor, *The Gig*. Broadway: Tony Award-winning revival of *Fiddler on the Roof* starring Topol, directed by Jerome Robbins (Gershwin Theatre) and the Lincoln Center revival starring Herschel Bernardi. Off-Broadway: *I Love You, You're Perfect, Now Change* (Westside Theatre). Five national tours throughout the USA, Canada, Japan and Russia. Some favorites: *A Man of No Importance*, *Grease*, *The Full Monty*, *Once*, *Pippin*, *Dear Miss Garland*, *Peter Pan*, *Violet*, *Ruthless!*, *Showboat*, *Follies*, *Mame*, *The Divine Sister*, *Nine*, and *Menopause the Musical*. Kathy was recently honored with the 2025 Elliot Norton Prize for Sustained Excellence. kathystgeorge.com

Thornton Wilder (Playwright) (1897-1975) was a novelist and playwright whose works celebrate the connection between the commonplace and the cosmic dimensions of human experience. He is the only writer to win Pulitzer Prizes for both drama and fiction: for his novel *The Bridge of San Luis Rey*, and two plays, *Our Town* and *The Skin of Our Teeth*. His other novels include *The Cabala*, *The Woman of Andros*, *Heaven's My Destination*, *The Ides of March*, *The Eighth Day* and *Theophilus North*. His other major dramas include *The Matchmaker* (adapted as the musical *Hello, Dolly!*) and *The Alcestiad*. *The Happy Journey to Trenton and Camden*, *Pullman Car Hiawatha* and *The Long Christmas Dinner* are among his well-known shorter plays. He enjoyed enormous success as a translator, adaptor, actor, librettist and lecturer/ teacher and his screenplay for Alfred Hitchcock's *Shadow of a Doubt* remains a classic psycho-thriller to this day. Wilder's many honors include the Gold Medal for Fiction from the American Academy of Arts and Letters and the Presidential Medal of Freedom. More information on Thornton Wilder and his family is available in Penelope Niven's definitive biography, *Thornton Wilder: A Life* (2013) as well as on the Wilder Family website, thorntonwilder.com

Courtney O'Connor* (Director/Producing Artistic Director)

– Courtney joined the full-time staff of the Lyric Stage in 2018 and was named Artistic Director in 2020. She has directed several pieces for the Lyric Stage, including *Assassins*, *Thirst*, *Urinetown: The Musical*, and *ART*. Courtney was a senior affiliated faculty member in Performing Arts at Emerson College for more than 20 years. In addition to directing for theatres and universities, Courtney has directed multiple site-specific productions at locations including the Senate Chamber of the Massachusetts State House, Mount Auburn Cemetery, and Boston's Old State House (all with Plays in Place). Through her work with the Coyote Theatre Project, she oversaw the creation of more than 200 new 10-minute plays written by youths from Boston. Courtney received the Elliot Norton Award for *Assassins* and *The Life and Adventures of Nicholas Nickleby* and the Alan L. Stanzler Award for Excellence in Teaching.

Shelley Barish (Scenic Design) – Lyric Stage: *Art*, *Preludes*, *Trouble in Mind*, *The Wolves*, *Camelot*, *Dear Elizabeth*, *Becky's New Car*, *Murder for Two*. Greater Boston Stage Company: *Little Women*, *Beehive*, *The 39 Steps*; Central Square Theatre: *Her Portmanteau*, *Young Nerds of Color* (Premier), *Pipeline*. Merrimack Repertory Theatre: *A Christmas Carol*. Wheelock Family Theatre: *Matilda*. Cortland Repertory Theatre: *The Addams Family*, *Legally Blonde*, *Cards on the Table*, *Last Romance*, *West Side Story*, *Newsies*. Off-Broadway: *Gideon's Knot*, *Mare in the Men's Room*. Shelley is a Professor at UMASS Lowell and was recently named the Nancy L. Donahue Endowed Professor in the Arts. She received her MFA from Michigan State University. shelleybarish.com

Rachel Padula-Shufelt (Costume Design) – Lyric Stage: *Urinetown: The Musical*, *Trouble In Mind*, *Assassins*, *Fabulation or, The Re-Education of Undine*, *Preludes*, *Be Here Now*, *The Thanksgiving Play*. Commonwealth Shakespeare Company: *The Winter's Tale*. Greater Boston Stage Company: *The 39 Steps*. SpeakEasy Stage Company: *A Man of No Importance*, *Ain't No Mo'*, *Heroes of the Fourth Turning*, *The Children*, *Choir Boy*, *Shakespeare in Love*, *Men on Boats*. Central Square Theatre: *Young Nerds of Color*, *Frankenstein*. New Repertory Theatre: *Oliver, 1776*. Actors' Shakespeare Project: *Macbeth*, *Edward II* (Elliot Norton Award for Outstanding Design). American Repertory Theater: *Charlotte's Web*. Gloucester Stage Company: *Gloria*, *Barefoot in the Park*, *Trad*, and *Crimes of the Heart*. A graduate of Emerson College, Rachel's work as a hair and makeup designer has been seen at Boston Ballet, American Repertory Theater, The Huntington, North Shore Music Theatre, and Broadway.

Deb Sullivan (Lighting Design)** – Lyric Stage: *Urinetown: The Musical*, *Trouble in Mind*, *Twelfth Night* (co-production with Actors' Shakespeare Project). Gloucester Stage: *Ms. Holmes & Ms. Watson Apt2B*, *Happy Days*. Actors' Shakespeare Project: *Emma*, *Romeo and Juliet* (Elliot Norton Award nomination), *Pride and Prejudice*, *A Midsummer Night's Dream*, *Hamlet*. The Huntington: *Ryan Landry's "M"*. New Repertory Theatre: *Collected Stories*, *Clean House*, *Eurydice*. Greater Boston Stage Company: *Laura*, *These Shining Lives*. Shakespeare and Company: *The Islanders*, *Twelfth Night*, *Cymbeline*, *H1R*. Dorset Theatre: *Pride and Prejudice*. Regional: Trinity Rep, Actors' Theatre of Louisville, Alliance Theatre, The Public Theater, Off-Broadway. Deb has worked with Northeastern University, BOCO@Berklee, Brandeis University, several high schools and is the lighting designer at a radio station. Upcoming projects: SpeakEasy Stage: *Lizard Boy*. Central Square Theatre: *Summer 1976*. Actors' Shakespeare Project: *Little Women*. Deb is a Boston based lighting designer. dlsullivanld.com

Andrew Duncan Will (Sound Design) – Lyric Stage: *Noises Off*, *Ken Ludwig's The Game's Afoot*, *Rooted*, *Preludes*, *A Gentleman's Guide to Love & Murder*, *The Last Five Years*, *Pacific Overtures*, *Gypsy*, *Murder for Two*, *Company*, *Sondheim on Sondheim*, *Dear Elizabeth*, *Sweeney Todd*, *Into the Woods*, and *One Man, Two Guvnors*. Recent local sound designs include productions for Boston Public Works, Greater Boston Stage Company, Fresh Ink, Hasty Pudding, SpeakEasy Stage Company, Bad Habit Productions, Flotsam Productions, Gloucester Stage Company, Puppet Showplace Theater, Company One, New Repertory Theatre, Commonwealth Shakespeare Company, The Poets' Theatre, and the A.R.T. Institute. Andrew received an MFA in Sound Design from Boston University, and an IRNE Award for Best Sound Design in 2014 for *Someone Who'll Watch Over Me* with Bad Habit Productions.

Lauren Corcuera (Props Artisan) – Select Lyric Stage credits: *Little Shop of Horrors*, *The Cake*, *The Treasurer*, *The Last Five Years*, *The Light*, *Fabulation or, The Re-Education of Undine*, *Preludes*, *Rooted*, *Assassins*, *Thirst*, *Urinetown: The Musical*, *ART*. Gloucester Stage: *Seared*, *Think of Me Tuesday*, *Mr. Fullerton Between the Sheets*, *Grand Horizons*. Front Porch Arts Collective: *Chicken and Biscuits*. Central Square Theater and Front Porch Arts Collective: *Next to Normal*. Commonwealth Shakespeare Company: *The Winter's Tale*, *As You Like It*. Lauren is currently the Assistant Prop Director at Emerson College.

Nerys Powell* (Production Stage Manager) – Lyric Stage: *Crumbs From the Table of Joy*, *Urinetown: The Musical*, *The Drowsy Chaperone*, *Sister Act*, *The Great Leap*, *Fabulation, Or the Re-Education of Undine*, *The Light*, *The Book of Will*, *The Last Five Years*, *Be Here Now*, *The Treasurer*, *Agatha Christie's Murder on the Orient Express*. Umbrella Stage Company: *Where We Belong* (Production Stage Manager) Instagram: @nerysp

Lucas Bryce Dixon* (Assistant Stage Manager) – Lyric Stage: *Hello, Dolly!*, *Urinetown: The Musical*, *The Play that Goes Wrong*, *A Gentleman's Guide to Love and Murder*. The Huntington: *Toni Stone*, *John Proctor is the Villain*, *The Band's Visit*, *Fat Ham*, *The Lehman Trilogy*, *Clyde's*, *Joe Turner's Come and Gone*, *Common Ground Revisited*, *The Bluest Eye*, *Hurricane Diane*, *Yerma*. Berkeley Repertory Theatre: *Clyde's*. SpeakEasy Stage Company: *Heroes of the Fourth Turning*, *BLKS*. New Repertory Theatre: *Hair*, *Oliver!*, *Trayf*, *Nixon's Nixon*.

Alex Chisholm (Managing Director) – Alex joined Lyric Stage in 2023 as Director of Philanthropy before assuming the role of Managing Director this season. He has also served as Marketing Director of the Rose Theatre in Kingston upon Thames, southwest London. Over the past 30 years, Alex has applied research around emerging technologies and changing markets to strengthen audience and consumer engagement across a variety of commercial, cultural, and educational organizations, including Pret A Manger, NBC Universal, Leapfrog, Royal Shakespeare Company, Electronic Arts, Katz Media, Wells Cathedral, and Boston Children's Hospital.

***Actors' Equity Association (AEA)** founded in 1913, represents more than 51,000 professional Actors and Stage Managers nationwide. Equity seeks to foster the art of live theatre as an essential component of society and advances the careers of its members by negotiating wages, improving working conditions and providing a wide range of benefits, including health and pension plans. Actors' Equity is a member of the AFL-CIO and is affiliated with FIA, an international organization of performing arts unions. | actorsequity.org

°Stage Directors & Choreographers Society (SDC) is the theatrical union that unites, empowers, and protects professional Stage Directors and Choreographers throughout the United States. Our mission is to foster a national community of these

professionals by protecting the rights, health and livelihoods of all our Members; negotiating and enforcing employment agreements across a range of jurisdictions; facilitating the exchange of ideas, information and opportunities; and educating current and future generations about the critical role of directors and choreographers in leading the field. | sdcweb.org

****United Scenic Artists (USA-Local 829)** is a labor union and professional association of Designers, Artists, Craftspeople, and Department Coordinators, organized to protect craft standards, working conditions and wages for the entertainment and decorative arts industries. The members work in film, theatre, opera, ballet, television, industrial shows, commercials, and exhibitions. The current active membership totals over 5,000. | usa829.org

ADDITIONAL PRODUCTION STAFF

Morgan Bailie, Wardrobe Supervisor
Billy Bollbach, Assistant to the Director
Gabriel Goldman, Head Electrician
Robert Najarian, Movement & Intimacy Consultant

SPECIAL THANKS

Rosey Strub | The Tyringham OT Family

LYRIC STAGE BOARD OF DIRECTORS

Ron Sudol, President
Tim Holiner, Vice President
Patricia Aronson, Treasurer
Sharon Parisi, Clerk


Nina Berk
Jazzmin G. Bonner
Sasha Castrowerde
Alex Chisholm,
Ex Officio
Richard Daynard
Amanda Eckhoff
Glenda Fishman
Kristina Lukas

David Miller
Courtney O'Connor,
Ex Officio
Stuart Rose
Elyse Schuerman
Daniel Sternberg
Janetta Stringfellow
Susan Wilchins


LYRIC STAGE ADVISORY COUNCIL

Barry P. Chaiken, MD
Carmen Chan
Christopher Cook
Wendy Gutterson
Martha Hayward
Jo-An Heileman
Michelle Landers
Laura Conrad Mandel

Jo Frances Meyer
Baron Pugh
Shwetha Ravi
Joe Richard
Dick Rousseau
Janet Spitz
Emily Stidsen
Ruth Whitney



**OCT. 9 – 19
2025**




MANTAL CINEMA PRESENTS


Leonardo!

A WONDERFUL SHOW
about a

TERRIBLE MONSTER




Scan for tickets &
more information



**SPEAKEASY
STAGE**
BOSTON'S HOME FOR THE BOLD

SEASON 35

A funny, feel-everything play about starting fresh.



PRIMARY TRUST

by Eboni Booth Directed by Dawn M. Simmons

Sep 12–Oct 11

Get tickets at SepeakEasyStage.com



**LYRIC
STAGE** BOSTON

Jump for Joy

With four more amazing productions ahead of us including a holiday treat to share with friends and family (*A Sherlock Carol*), the return of Lyric Stage favorite Aimee Doherty in a stunning one-woman musical (*Penelope*), the poignant and funny tale of an aging actress (*Angry, Raucous, and Shamelessly Gorgeous*), and an all out extravaganza that is a love letter to musical theater (*Something Rotten!*), there is truly something for everyone.

Let the anticipation, discovery, and joy of live theater last through all the months ahead!

Become a 3- or 4-show subscriber today! Visit lyricstage.com, the box office during your visit at the theater, or call 617.585.5678.

Kenny Lee in *Urinetown: The Musical* (2024)



“At first glance, the play appears to be practically a genre study of a village in New Hampshire. On second glance, it appears to be a meditation about the difficulty of, as the play says, ‘realizing life while you live it.’”

– Thornton Wilder talking about *Our Town*, Paris Review, 1956

Born on April 17, 1897, in Madison, Wisconsin, Thornton Wilder was a prolific writer whose literary career spanned novels, plays, and essays. His early exposure to literature and drama was significantly influenced by his family, particularly his mother, who encouraged his creative pursuits.

Wilder’s *Our Town* is set in the fictional town of Grover’s Corners, a reflection of his experiences in Peterborough, New Hampshire. The simplicity of small-town life, underscored by universal themes of love, loss, and the passage of time, makes *Our Town* a profound exploration of human existence. Wilder’s writing resonates with audiences, evoking both nostalgia and a deeper appreciation for the simple moments we often overlook: breakfast with the family, sharing weather patterns with a neighbor, and that ‘terrible moon.’ Wilder creates an intimate connection, drawing us into the heart of Grover’s Corners

It’s clear that his works continue to inspire and provoke thought. In a world that often feels chaotic, *Our Town* serves as a gentle reminder of the beauty of our everyday lives. It encourages us to cherish the moments we often take for granted.

OCTOBER 24 – NOVEMBER 9, 2025

ONE MURDER.
TWO ACTORS.
SIX SUSPECTS.
AND ONE PIANO!

MURDER FOR TWO

A zany musical comedy whodunnit, offering the perfect blend of music, mayhem, and murder. When the great American novelist Arthur Whitney is found dead at his own surprise party, the list of suspects is long—was it the prima ballerina, the widow, the niece, the psychiatrist, or even the detective?



TICKETS \$26 - \$90

781-279-2200
greaterbostonstage.org
395 Main St, Stoneham, MA



CREATING STAGE
BOSTON UNIVERSITY
Boston University College of Fine Arts
School of Theatre

the Ceremony

BOSTON'S
FAMILY
CYCLE
6 of 9

A World Premiere by
MFONISO UDOFIA

Directed by
KEVIN R. FREE

September 11 - October 5, 2025
Joan & Edgar Booth Theatre

BOSTON ASIAN AMERICAN FILM FESTIVAL

BAAFF.ORG

2025

OCTOBER
16-26

2025

In-Person & Virtual
Boston, MA



WATCH FILMS | MEET FILMMAKERS | ENGAGE IN DISCUSSIONS

Join us for the 17th annual Boston Asian American Film Festival!
Meet inspiring filmmakers, take part in meaningful conversations,
and explore diverse Asian American stories that connect,
empower, and uplift our communities through the power of film.

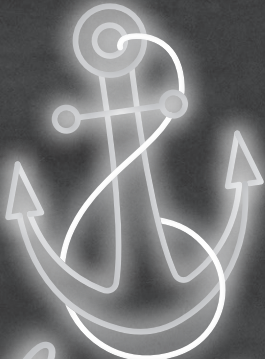
BAAFF is a co-production of the Asian American Resource Workshop and ArtsEmerson.

LYRIC
STAGE BOSTON

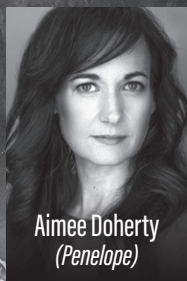
FEB 6 - MAR 1

LyricStage.com |   

Penelope



IT'S TIME FOR HER SIDE
OF THE STORY.



MUSIC, LYRICS, &
ARRANGEMENTS BY

ALEX BECHTEL

BOOK BY

ALEX BECHTEL,
GRACE MCLEAN,
EVA STEINMETZ

DIRECTED BY

COURTNEY O'CONNOR

MUSIC DIRECTION BY

DAN RODRIGUEZ

2025/26 SEASON SPONSORS: Tim & Linda Holiner | Diana Humphrey | Paul Kastner | Sharon & John Parisi

PRODUCTION SPONSORS: Richard & Carol Daynard



Generous friends like you advance our mission to produce and present live theatre in Greater Boston with an intimate approach that promotes inclusivity and connection. The Lyric Stage leads an effort to integrate live theatre and theatre education into the lives of all residents of greater Boston. We extend our sincere thanks to those who make our work possible. Together we can.

This list has been updated to reflect gifts through September 1, 2025. For questions, concerns, or details, please contact Elizabeth_Carsley@lyricstage.com.

SEASON SPONSORS

Tim & Linda Holiner
Diana Humphrey
Paul Kastner
Sharon & John Parisi

THE POLLY & SPIRO ARTISTIC EXCELLENCE FUND

Carmen S. Chan
The James D. & Veronica E.
Chesterton Family
Foundation
Rebecca & Skip Curtiss

Robert & Iris Fanger, *in
memory of Spiro Veloudos
& Polly Hogan*

Sylvia E. Green, *in honor
of Malcolm C. Green*

Elaine Levine

Barbara Low

Jean Rosenberg &
Peter Southwick

Sam & Gretchen Shubrooks

Michael Connery &

Gene Marley III

David Crandell &
Wendy Gutterson

Ethan & Amy

D'Ablemont-Burnes

Garth & Lindsay Greimann

Sarah & Eric Hanselman

Bob Kuhn, *in memory of
Darcy Devney*

Lowell Partridge

Julie Rohwein & Jonathan Aibel

Allison K. Ryder &

David B. Jones

Shell Oil Foundation

Madelyn & Paul Sorensen

Daniel Sternberg

Jean Walsh & Graham Davies

Ruth Rotundo Whitney

Michael Zody

Betsy Peck

Ruth Powell

Jean Rosenberg & Peter
Southwick

Kathleen & William Rousseau

William Sano, *in honor of*

Mary & Larry Shaw

Debra & John Sculley

Marilyn Shesko

David Shuckra

Janet Spitz & Stephen Truslow

David & Ann St. Germain

Barbara & Jim Stowe

Jan & Chris Swain

Alexander Turchin

Mary Verhage

Suzanne Posner, Terry Chen

Rothchild, Betty Waxman &

Loretta Wiczner, *in honor of*

Howard Cohen &

'Myra Muscant

Bonnie Wellins &

John McNamara, *in memory*

of DG Wellins

Jo Wellins, *in memory of*

DG Wellins

Robert & Shirley Zimmerman

Liz & Andy Zucker

Actor's Circle (\$1,000-\$2,499)

Mary & John Antes

Jacquelin & Robert Apsler

Marcia Bartusiak & Steve Lowe

Carmen S. Chan

Matt Chapuran &

Michelle LeBlanc

City of Boston

Margaret P. Davis

Zach & Willis Durant-Emmons

Mary K. Eliot

Alain & Rebecca Euderic

William & Susan Fink

Glenda & Bob Fishman

David & Karen Gaylin

Mark Glasser

Sylvia E. Green, *in honor of
Malcolm C. Green*

Serena & Brent Hall

Ruth A. Hunter

Will & Anastasia Lyman

Wendy & Bob MacDonald

Jack & Dottie MacKeen

Sharon A. Miller

Martha C. Narten

Arthur & Athena Papas

Apprentice's Circle (\$500-\$999)

Peter Ambler & Lindsay Miller

Jeannine Ayotte

Dixie & Jon Borus

Stacey & Mark Brandon

Marianne Callahan

Sasha Castroverde

Judy Dillman

Elaine Epstein & Jim Krachey

Elaine Fong & Leon Yankwich,

in honor of Janet Spitz

Sara S. Glidden &

Paul A. Perfetti

Laurie Gould

Grace & Bill Gregor

Jeffrey Guenette, *in memory of*

Margarita Martinez

Tom & Nancy High

Founder's Circle (\$50,000+)

Howard Cohen &
Myra Muscant
Massachusetts Cultural Council
The Estate of Margaret &
Robert Raymond
The Estate of
Marylen Sternweiler

Playwright's Circle (\$25,000-\$49,999)

The Shubert Foundation

Artistic Director's Circle (\$15,000-\$24,999)

Nina & Don Berk
Richard & Mary Scott
Sam & Gretchen Shubrooks
Ron Sudol

Producer's Circle (\$10,000-\$14,999)

Judith & James Barr
Brookline Bank
Jennifer L. Eckert
James G. Kamitses &
Cynthia Bencal
Michael Roitman &
Emily A. Karstetter
Mary & Larry Shaw

Director's Circle (\$5,000-\$9,999)

Patricia Aronson
Carol J. Bresler &
Carolyn Billinghamurst
Richard & Carol Daynard
JoAnne Walton Dickinson &
John E.R. Dickinson
Marjorie & Donald Forte
Helen & Herman Gimbel
Charity Fund
Google, Inc.
Jo-An Rolfe Heileman
Thomas Kelly & Victoria Fremont
Kristina Lukas &
Kevin Sullivan Family
Sean & Mary McRae
David R. Miller &
Ruth Hertzman-Miller
Michele Mulvaney
Jan & Stuart Rose
Elyse & Don Schuerman
Tiny Tiger Foundation
Dr. Vanessa Torrice
Sue & Steve Wilchins
Richard & Sally Zeckhauser

Designer's Circle (\$2,500-\$4,999)

Diane & Fred Berk, *in honor of
Nina & Don Berk*
Andrew & Darina Chesterton

Jeffrey Hughes &
Nancy Stauffer
Susan Hunziker
Joan Kinne
Edgar Russell Knudson &
Louis Peter Mula, Jr.
Anonymous
Michelle Lavers
Richard & Beth McLaughry
"The Walking Group"
Chana Meyer, Carol Singer,
Lynda Fink, Susan Levin,
Ruth Nemzoff, *in honor of*
Howard Cohen &
Myra Muscant
Katalin Mitchell
John & Judith Mitchell
Frank Neely & Ron Parmakis
Stephen & Margaret Ober
Bob & Jackie Pascucci
Alexandra Pollard &
Jeffrey Kapell
Joe Quinn & Diane Juliar
Anne Radday
Alice Richmond & David
Rosenbloom, *in honor of*
Nina Berk & Courtney
O'Connor
Roland W. Roy
Laurie Saylak, *in memory*
of Lee Humphrey
Robert Seiler
Ellen L. Simons
Gayle Smalley & Judith Curby
Bobbie Steinbach
Janetta Stringfellow
Robert & Leslie Turner
Donna Wade
Joelle & Harvey Wartosky
Ellen Westheimer
Jerry Wheelock &
Elizabeth Wood
Marilyn Wright
Christopher R. Yens &
Temple Gill

**Supporter's Circle
(\$250-\$499)**

Berndt Anderson
Laura K. Beasley-Topliffe
Tracy & Courtney Beck
Susan Britt
Janet Burns
Kelly Caiazzo
Victor & Mary Calcaterra
Matthew Carr
George Chin

Leslie Colello
Community Music Center
of Boston, *in honor of*
Lee Humphrey
Paula Cortes
Sandra & Doug Dapprich
Jon & Kim Davis
Christine Dugan &
Frank Graves
Anne Exter & Lance Kawesch
Robert & Iris Fanger,
in memory of Spiro Veloudos
& Polly Hogan
Ronald Feinstein, *in honor*
of Myra Muscant &
Howard Cohen
Gary & Frances Feldman
Janet Fidelman
Lisa & Barry Fireman
Chris Gaucher &
Roger Ferguson, Jr.
Amy Gitlin
Mary & Steven Goldring
Elizabeth Gotha, *in memory*
of Spiro Veloudos
Stephen Gronberg &
Carol Houde
Alison Hall
Philip & Mary Hamilton
J. William Harris &
Terry K. Rockefeller
Bruce Hauben & Joyce Brinton
Peter Haydu & Dona Sommers
Martha & Colin Hayward
Joseph & Ana Impellizeri
Paul & Alice Johnson
Chris & Joanne Johnston
Jacqueline Kovacs &
Allen Post
Joanne & James Ryan
Andrew Leonard
Susan A. Lester
Liberty Mutual Foundation
Reuel & Malvina Liebert
Barbara Low
Deborah McElhinney
Patrick & Lynn O'Shea
Katharine & William Reardon
Patrick Rivelli
Roberta Rubin & Don Abrams
Dick & Dot Santos
The Schrupka Fund
Alan & Leslie Schwartz
Barbara & Alan Smith
Martha Stearns

Andrea & Gregory Stidsen,
in honor of Emily Stidsen
and Nina & Don Berk
Hannah Taytslin &
Michael Devine
Joan & Jerome Weinstein
Gustavo Pena & Kerry Weiss
Esther Williams
Drs. Katharine & Marshall Wolf
Harvey Young &
Heather Schoenfeld
The Zar-Kessler Family
Boris Zbarsky & Emma Zbarsky

**Friend's Circle
(\$100-\$249)**

Lillian Sober Ain
Carmen Aliber, *in honor of*
Marvin & Barbara Fox's 70th
Wedding Anniversary
Sandy & Jim Annis
Anonymous
Anonymous
William C. Barnert
Katherine Belmont
Jennifer Berry
Blackbaud Giving Fund
Wesley & Joanne Blauss
Sarah Blume, *in honor of*
Aimee Doherty
Victor & Iona Bonneville
Rhys V. Bowen & Rebecca Snow
Amelia Broome
Tamar Brown
Linda Brown & Shawn Wald
Bill & Marian Bruins
Judith Butler
Lonni & Steve Campbell
Charles R. Carr
Bernadette & Bob Carsley
Ralph Chadis
Elinore Charlton
Sharon Clark
Carolyn Clay
Theodore & Carolyn Colton
Theo & Tamara Cookingham
Chris Coveney
Christine & David Cunningham
Rebecca & Skip Curtiss
Fred Daum
Katharine Davis
Rochelle Dein
Daniel Dementiev
Carl & Mary DiMaiti
Glenn Dodge
Paul Donovan

Roy W. Doolittle III
Joan Doucette
Boris & Lisa Dubinsky
Joan Dubis
Gary Duehr
John M. Dugan &
Carol Baffi-Dugan
Jacob Edelman
Walter Einstein, *in honor of*
Stu and Jan Rose for all their
hard work for Lyric Stage
Norma Elias & Saul Toby
Lee Emerson
Deanne England
Andrea & Russel Pergament
Terry & Ann Esvelt
Christine Eyre
Rob & Fedra Steeman
Martha Ferko
Ann Fickenwirth
Linda & John Freeman
Mary M. French
Alan & Deborah Friedman
Tere Gade, *in honor of*
Michael Kaye
Terrance J. Gaetz
Judith Gentile
Julie Ginsburg
Nancy Gold
Diana Goldfarb
Donald Goldstein
Ms. Anita Gonzales
Todd C. Gordon
Jeffery Gray
Daniel Greenwood
The Gutmans
Joan Harrington
Marguerite Heywood
Donald & Nancy Hunton
Diane Jacobs
Lois Jacobs, *in honor of*
the Box Office
Karl & Christine Johnson
Linda Jones
Mary & Robert Kahn
Anne Kelly
Michael J. Klein
Nancy F. Korman
Gail & Elliott Laffer
Deborah Levey &
Crispin Weinberg
Elaine Levine
Elaine Levine
Ronald & Sandra Levy
Matthew List
Cynthia G. Lovell

David & Sandra Lyons	Sandra & Philip Stymfal	Artie Barrett	Peter Dangoia
Charlie MacLeod	Camilla & Stephen Sutter	Hannah Bates	Charley & Elaine Davidson
Barbara P. Madden	Eugene & Meredith Thompson	Dalveen Belyea	Michael Davis
Susan Maren	Jeffrey Thomson & David Janero	Adam Berger	Tyler Dean
Fran & Jorge Martinez, <i>in loving memory of Margarita Damaris Martinez</i>	Alan & Susan Tick	Max & Glenna Bermann	Mark DeLuca
Heather & Chris Martino	Bernard Tobin	Judith Bernstein	Edmund & Judith Dente
Margherite Matteis	Carolyn Trees	Anonymous	Kenneth DeRosier
Patricia Mazza	Maura B. Troiano	Catherine Betz	Marcy Devine
Michael McCord, <i>in honor & memory of Lee Humphrey</i>	Edmond & Patricia Trudelle	John O. Biderman	Isabella Dibona
Diane McCormack	Lynn Tucker	Avery Bleichfeld	Reed Dickinson
Richard McGinnis	Kent & Nancy Van Zant	Juliette Bloom	Zachary Diringier
James McSweeney	Beverly & John Wand	Phyllis Bluhm	Debbie Dobbins
Karole Mendelsohn	Vicki & Phillip Webber	Susan Blumenfeld	Katherine Donahue
Brett & Julia Miwa	Harold Weintraub & Mary Thomsen	Richard Bock	Richard Dower
John S. Moynihan	Janice Wester	Gregg Borgeson & Meg Bond	Barbara Duffield
Elizabeth Murray	Jeanine Wood	Maurice Bourque	Ally Dugan
Roberta Myers & Ariel Dagan	Jerry & Barbara Wood	Doug Bowen-Flynn	Charles Q. Duncan
Greg Nash	Julie Woodall	Kathleen Boyce	Liz Dusza
Debora Nickla	Patricia & Douglas Woodlock	Lisa Brandes	Michael Elkin
Rosemary O'Connell	Sonja Yates	Ieva Broks	Sandra Elson
Joseph & Anne O'Connor	Nathan Zielonka	Madelyn & Alex Brown	Patricia Epperly
Pamela Oliver & Mark Whittaker	Dr. Steven A. Zizza	Laila Brustin	Dr. Mark Epstein & Amoretta Hoerber
Nancy Olson	Gail Zunz	Estelle Burg	David Estridge
Bob & Paula Pickett	Contributor's Circle (\$1-\$99)	Joy Burke	Kaylah Facey
Kenneth & Judith Pogran	Deborah Abbott	Trevor Burnham	Linda Faldetta
Donna Purin	Jon Adler & Jonathan Lewis	Iris Cabor	Brian Fallon
Kigner & Qiu Family	Suneet Agarwal	Ella Byrne-Cabot	Kim Faris
Andrey Rakalin	George Aghjayan	Tijan Camara	Charles Favazzo
Suzanne Ricco	Miki Akimoto	Jessica Carbone	Michelle Fawson
Roger Riggs	Jonatan Galindo Aleman	Betty Cares	Katie Felton
Roselyn Romberg	Joseph Alen	Joan Carlson	Virginia Finnerty-Brooks
David Roohy	James & Kimberly Alexander	Caraline Casey	Elizabeth Fino
Laura Rosen	Cynthia D. Allen	Fritz Casselman & Susan Ashbrook	Jim Fitzgerald
Meredith Rosenberg	Arthur Allen	Ruben Castro	Morgan Fitzpatrick
Allan & Debbie Roth	Lauren Allen	Faith Chandler	Benjamin Flax
William & Jacki Santoro	Rashed Alnuaimi	Nancy Chang	Meghan Fogarty
Agnes Savini	Deborah Amori	Fran Charnas	Monica & Bob Foley
Ms. Mary C. Savini	Maria Jose Araneda	Shunyuan Chen	Mia Foley
Barbara Scafidi	Janice Armstrong	Maryellen Chiariello	Cary Forman
Joel Schwartz	Andrew Armstrong	Sally Coburn	David & Susan Foss
Marci D. Shaw	Bill Arnold	Anita Coco	Barbara & Marvin Fox
Angela Siciliano	Linda Arnov	Ms. Catherine Ann Cody	Michael Frank
Linda & Peter Silverstein	Chris Arsenault	Ryan Cokely	Maureen Franzosa
Rita & Harvey Simon	Danielle Babin	Mark Connolly	Jennifer Fraser
Carole & Jack Skowronski	Eileen Bagley	David Cookman	Katherine French
James Spall	Carrie Baird & Roger Waitt, <i>because we love Johnny Kuntz and supporting the arts</i>	Bradley Cooper	Howard Friedman & Sherry Leibowitz
Sandra Spanier & Charles Merrill	Dr. Nancy & Christopher Baker	Robert Cope	Samuel Gabay
Sarah Spillane	Deborah Baker	Barry & Carolyn Copp	Kalman J. Gacs
Cathy Stern	Matt Baltz	Mary Jeanne Coughlan	Edward Gagne
Robert Stinson		Rick Cresta	Patrick Gallagher
James & Susan Stockard		Matthew G. Croak, <i>in honor of Richard & Catherine Croak</i>	Sheila Gallagher
Ayni Strang		Amanda J. Crone	Michael Gannon
		Sarah Cuddy	Maddie Gershman
		Anne Cullen	Elizabeth Gilmore

Ann Marie Giovino	Dr. Martine Kalke	Bryan Lussie	Kayla Neumeyer
Alexandra Gladwell	Vicki Kaplan	Emilie Lyon	Roanne Neuworth
Gale Glazer	Ron & Ariel Kappler	Svetlana Lyons	Sean O'Brien
Barbara Glicker Havumaki	Peter & Linda Katz	Lyric Stage Box Office	Susan O'Connor
Christen Glogowski	Yetta Katz	Jacqueline MacCallum	Brenna O'Donnell
Patricia Godfrey	Robin & Scott Katzman	Scott Machanic	Ciara O'Driscoll
Kimberly Goffinet	Edward Kearns	Dorris Woolery &	Karen Onorato
Marlene Goldsmith	Charles Keefe	Tom Mackowski	Ebru Oral
Elizabeth & Arthur Goldsmith	Amy Kent	Thomas & Noel Maffuci	Sebastian Pacios
Mrs. Nancy Goodman	Sophia Keohane	Andrea Maistros	Vincent Parrella
Jinger Gottschall	Paul J. Keplin	Thomas Mancuso	Barbara Ann &
Catherine Grant	Fiona & Michael Kerr	Richard & Candace Mandel	Barrie Paster, M.D.
Joseph M. Grant	Sachin Kewalramani	Barbara Maratos	Kerry Pearson
Chelsea Gray	& Lina Jeffers	Carl Marci	Juan Perez
Dr. Jon Grayzel	Theresa Kiernan	Marcia Markey	Andrew Peterson
Cynthia Green	Andrew Kim	GG Martel	John Petrin
Elizabeth Gross	Jim Kimball	Theo Marvin	Michael Pevzner
Nancy Grossman	Barbara King	Alexa Mason	Henson Phan
Elizabeth Grube	George Klauber	Michael Mathieu	Anne & Bruce Philbrick
Marah Gubar	Daniel Kleinman	Eddie Mayo	Elizabeth Pines-Learner
Audrey Haas	Sue Klem	Suzanne McAllister	Thomas Plocinik
Nina Hackel	Tracy Kozelek	Mark McCarthy	Maura Power
Melody Hadap	Alex Komzin &	Kathleen McCormack	Mark J. Powers
Bill & Susan Hadge	Irina Kechina	Peter McElhinney	Florence Poy
Nicholas Hadland	David Kramer	Joseph McEnness	Erin Price
Charles Hadrill	Colleen Kristofor	Susan E. McGee	Marian Prokop
Gerald Hamelin	Gaud Krotoff	Edward McGehee	Katherine Purrello
Genevieve Hammond	Yuji Kuzuhara	Jason McGrath	Rosamond Rabinowitz
Donna Harris	Margaret Lacey	Roman McNichols	Anna Maria & Paul Radvany
Lee Harrison	Colin Lamusta	Hamilton McRae	Vimal Raheja
Connor Hathaway	Kevin Lancelotta	Linda Medwid	Leonid Raiz
Corwin Hee	Thomas Lane	Christopher Meninno	Susan Ray
Nancy Hegarty	Ms. Maureen Lane	Mr. & Mrs. Raymond E. Meyer	Michael Read
Ed Heilbron	Susan M. Lang	Carol Mezzari	Jessica Reeg
Ingrid & Michael Hillinger	Barbara Laronde	Gregory Miele	Michael Refolo
Carla D. Hillyard	Joe Laskowski	Laura Mignery	Jan Regan
Edward Hodges	Anne Lauriat	Stan & Sally Miller	Fran Regan
Diane Holzheimer	Linda Leary	Mackenzie Miller	David Reiner & Cynthia Eid
Marcia Hood	Heidi Lehner & Paul Milbury	Richard Mills	David Reishus
Bill & Sandy Horne	Lori Leiderman	John Miner	Bruno Restivo
Peter E. Hornstra	Taavi Lepmets	Maureen Mintz & Eldad Ganin	Susan Richards
Jane A. Horton	Barry & Nancy Levy	Kahlil Mitchell	Ross Rizley
Emily Hottal	Debbe & Christopher Lewis	Margaret Mone	David Roane
Fariba Houman	Sunny Lin	Mauro Morabito	Arthur and Elaine Robins
Beth Houston	Kate Linden	Lyn Morrissey	Andrea Rodericks
Richard Hubbard	David L. Lindsay	Janine Mudge	Scott Rogers
Ronald Hubbard	Margaret Link	Mark & Nancy Murphy	Amy Rose
Melissa Humphrey	Barton Lipman	Bob & Patricia Mytkowicz	Larry Rosenberg
Jeffrey Hutton	Peter Litwack	David Nagle	Leslie Rosenberg
Lynn Jeffery	Tammy Gooler Loeb &	Andy Nash	Ian Rossin
Susan Jepsen	Bob Loeb, <i>in honor</i>	Alexander Nedzel &	Melissa Rubin
Genoa Jones	<i>of Nina Berk</i>	Susan Kruger-Nedzel,	Jennis Sadler
Kate Jones	Bryan Logue	<i>in honor of the Lyric Stage</i>	Julia Saidenberg
Petra Joseph	Dionne Lomax	<i>Staff</i>	Aysa Salam & Lyn Keithline
Leslie Kaelbling	Janina Longtine	Caterina Nelson	Anthony Salido
	Richard Looney	Caren Nemtzw	Victoria Sandin

Elizabeth Sarles
 Kate Schaeffer
 Thomas Schieber
 Elizabeth Schultz
 Jeffrey & Sunita Schurgin
 Stephen Scicchitani
 John Sciretta
 Linda Seale
 Lloyd Selbst
 Tani Shavit
 Jessica Shaw
 James Shea
 James Sheehan
 Leo Sheft
 Leo Sheftelevich
 Zoe Sherman
 Allie Jameson Shoemaker
 T. Lee Shostack
 Cynthia Sickler
 Susan & Joseph Silverman
 Joseph Silvi
 Alexa Simeonsson
 Helaine Simmonds

Janice Simmons
 Martin Simmons
 Jesse Simons
 Satchit Sivakumar
 Stan Smith
 Stephanie Snow
 Elena Sokolow-Kaufman
 Richard Sonderegger
 Dr. Theodore
 Arthur Souliotis
 Andrew Spofford
 Michelle St. Pierre
 William Stanton
 Deborah Steenland
 Jennifer Stein
 Deborah Stein Sharpe
 Bradford Steinka
 Rebecca Stockman
 Alan & Kristi Strahler
 Eugene & Madeline
 Straussberg
 Joan & Richard Struzziero
 Peter Sturges

Dave Sullivan &
 Dave Nuscher
 Kim Sullivan
 Liam Sullivan
 Manabu Takasawa
 Emily Talley
 Jill Tapper
 Peter Terris
 Christy Tetterton Ellman
 Timothy Theriault
 Jay Thornton
 Susan Tiffany
 Suzanne Tinsley
 Alisa & Ian Todreas
 Michael Torocsik
 Dennis Trainor
 Katherine Tranquada
 Carina Traub
 Grace Trivers
 Sherri Tunstall
 Olga Eldek Turcotte
 Deborah Uhlin
 Page Valentine

Joshua Van Alfen
 Anthony Visconti
 Sofia & Grisha Voulkhman
 Ella Wagner
 Hazel & Jordan Warnick
 Keith Watters
 Samuel Weems
 Maryanne Weiss
 Ellen Weiss
 Natalie Weltz
 Abigail White
 Martin Wohlwend
 Mary & Gary Wolf
 Fred Wright
 Matthew Wunder
 Artimus Wuu
 Rosalind & Charles Wyman
 Dani Wynn
 Yuting Yan
 Julianne Yazbek
 Deborah Young
 Alice Zaff
 Randy Zelen

Our Town. Your community.

*Treat yourself at Duck Soup
and become part of our family.*

Duck Soup is proud to support
 Lyric Stage Boston and this
 production of *Our Town*. We hope
 you will visit us online or at our
 Sudbury location so we can
 welcome you into our flock.



365 Boston Post Road in Sudbury
 (978) 443-3825
quackquackquack.com

ABOUT YOUR THEATRICAL HOME:

140 CLARENDON STREET



The Lyric Stage Company of Boston produces its work at 140 Clarendon Street, the historic YWCA Building, which resides on the land of the Massachusetts and Pawtucket Peoples.

The Massachusetts Peoples are the descendants of the original people that the English first encountered in what is now the Commonwealth of Massachusetts. The Pennacook tribe, sometimes called Pawtucket and Merrimack Indians, lived in northeastern Massachusetts and southern New Hampshire. The Nipmuc Peoples occupied the interior portion of what is now Massachusetts and parts of Rhode Island and Connecticut. The Mashpee Wampanoag Tribe has inhabited present day Massachusetts and Eastern Rhode Island for more than 12,000 years.

140 Clarendon Street is also the home of YW Boston, formerly known as the YWCA Boston, an organization that was at the forefront of

many social movements throughout the history of the city of Boston. YWCA Boston was first established in 1866, and began operating out of 140 Clarendon Street in 1927. YWCA helped propel many programs and initiatives for young women across the country, such as sex education, women's suffrage advocacy, bilingual instruction for immigrant women, the International Conference of Women Physicians, and the Interracial Seminar. Today, YW Boston's work focuses on addressing racial and gender inequities through a variety of diversity, equity, and inclusion services, youth programming, advocacy, and more.

In 1991, the Lyric Stage moved to 140 Clarendon Street from its former home on Charles Street. The current theater and adjacent offices were constructed on the second floor of the building, and a fourth floor rehearsal hall was added in 2016.

In 2021, YW Boston and its investment partners sold the building to Beacon Communities, who rehabilitated approximately 50,000 square feet of existing hotel and residential spaces into affordable housing units, health and wellness amenities, and offices for building management staff operated in partnership with the Pine Street Inn. The building contains 210 apartments (an increase of 92 housing units), all of which are income-restricted to households with incomes at or below 60% of the Area Median Income.

As a part of the sale, Beacon Communities and Lyric Stage negotiated a new 19-year lease, ensuring that 140 Clarendon Street will be the Lyric Stage's forever home.

For more on your visit and how to contact us, box office hours, ticketing & performance policies, and other FAQs go to lyricstage.com & click on YOUR VISIT.

The **Lyric Stage Company of Boston** produces and presents live theatre in Greater Boston with an intimate approach that promotes inclusivity and connection. The Lyric Stage leads an effort to integrate live theater and theater education into the lives of all residents of Greater Boston.

Founded in 1974 by **Ron Ritchell** and **Polly Hogan**, the Lyric Stage is Boston's oldest resident theatre company. After establishing a loyal following on Charles Street, Ron and Polly led a successful 1991 campaign to create the Lyric Stage's current home on Clarendon Street. Polly was the chief negotiator for the NEAT (New England Area Theatres) contract, which made it easier for local producers to hire members of Actors Equity Association, the union for actors and stage managers.

In 1998, **Spiro Veloudos** was appointed Producing Artistic Director. During his tenure, he continued Ron and Polly's commitment to local artists; with few exceptions, the theatrical artists that work at the Lyric Stage live in the Greater Boston area. Spiro also established a reputation for staging large musicals in the Lyric Stage's modest playing space, including a signature Sondheim Initiative, which covered ten musicals over twenty years.

In 2016, the Lyric Stage opened Clarendon Hall, a year-round rehearsal space. Clarendon Hall is available at a subsidized rate to members of the Boston Dance Alliance and other arts organizations and individuals.

Theatre-based education has been a core of the Lyric Stage's mission since its founding. Through workshops, performances, and classroom visits, Lyric Backstage introduces high school and middle school students to career opportunities in the creative economy. The G. Lee Humphrey First Page Playwriting Festival allows students to discover their voice through the writing and presentation of a 10-minute play.

In 2019, the Board appointed **Matt Chapuran** as Executive Director and **Courtney O'Connor** was named Artistic Director. In fall 2023, Courtney was appointed Producing Artistic Director; she is now joined by **Alex Chisholm** as Managing Director, and together they continue the work of centering Lyric Stage in Boston's theatrical community, introducing live theatre to new audiences, and promoting new theatrical voices in Boston and nationwide.

LYRIC STAGE COMPANY OF BOSTON STAFF

Courtney O'Connor, Producing Artistic Director
Alex Chisholm, Managing Director

Elizabeth Carsley, Audience Experience Manager
David D'Agostino, Production Manager
Heather Darrow, Director of Marketing
Adele Nadine Traub, General Manager
Alexandra Smith, Community & Artistic Programs Manager
Kandycy Whittingham, Marketing & Digital Content Associate

Box Office & Front of House:

Regina Ashley, **Eva Levin**, **Madeline Finkleman**,
Caleb Palmer, **El Segall**, **Lindsey Weaver**, Box Office
& House Managers

Jazzy Compton, **Chloe Hein**, **Tess Henedy**,
Carlisle Robbins, **Jillian Sullivan**, Box Office & Front
of House Assistants

Amanda Li, **Jillian Sullivan**, Community Engagement/
Marketing Assistants

Angelina DeMonte, Administrative Associate

Stage Managers 2025/26 Season:

Charlie Berry*
Lisette van den Boogaard
Lucas Bryce Dixon*
Polly Feliciano*
Emma Hunt
Thomas M. Kauffman*
Nerys Powell*
Al Shea DiBiase

*Denotes member of Actors' Equity Association

Set Construction:

The scenery for this production was constructed by
Wooden Kiwi Productions, LLC.

Additional Staff:

Melissa Wagner-O'Malley, Graphic Design
Belinda Thresher, Abella Publishing Services
Leslie Holmquist, Bookkeeping



Follow us!   

Support Our Season of Surprises

Welcome to a brand new season with Boston's oldest professional theatre company.



Each production is an opportunity for us to be surprised by new stories, characters, and ideas. Every performances is an opportunity to connect with others and share in what makes theatre a vital part of *our town*.

Our audiences — *you* — power the the joy and inspiration that make theatre so special.

Please support the surprises ahead by making a gift today.

And, thank you for helping kick off another exciting season!

James Turner, Kathy St. George, & Elliana Karris in *Urinetown: The Musical* (2024)

**Stories about,
well, pretty much
everything.**



wbur.org

