



BY  
HENRY LEWIS,  
JONATHAN SAYER  
& HENRY SHIELDS  
DIRECTED BY  
FRED SULLIVAN JR.

# THE PLAY THAT GOES WRONG

It's SO BAD, it's GOOD.

THE LYRIC STAGE  
YOUR THEATRICAL HOME

NOV 11-DEC 18

LYRICSTAGE.COM | COPLEY SQ. | 617.585.5678



# A NOTE FROM THE EXECUTIVE DIRECTOR AND ARTISTIC DIRECTOR



In the song “Myopic Books,” Mark Eitzel sings “Maybe the worst is over,” which sounds pretty good until you consider the alternative.

On January 1, we share our third anniversary of working together as Artistic Director and Executive Director and happily report that much of the worst of 2020 feels finally behind us. We finally staged cancelled shows like *A Gentleman’s Guide to Love and Murder* and *Fabulation or, The Re-Education of Undine*,

audiences are returning, and last year we signed a new 19-year lease for our forever home on Clarendon Street. We’re even looking forward to sharing news about Lyric Back Stage, our newest education program.

The central joke of *The Play That Goes Wrong* is that despite the obstacles faced by the Cornley University Society, they refuse to quit. They love each other too much and they love theater too much. The revelation of character through adversity is core to almost all the plays and musicals we love dearly and is one of the yardsticks we’re using as we’re evaluating the six shows that will comprise the 2023/24 season.

Whether we’re in the worst, or the best, we’ll only know with the hindsight of time. For the moment, we’re happy that we can continue to bring you a season of joy, reveling when we can with our colleagues, our artists, our volunteers, and our friends in the audience. Best or worst, the times are always better if you have someone with whom you can share.

Yours dearly,

Matt Chapuran  
Executive Director

Courtney O'Connor  
Artistic Director

## LYRIC STAGE BOARD OF DIRECTORS

Ron Sudol, President  
Tim Holiner, Vice President  
Glenda Fishman, Treasurer  
Sharon Parisi, Clerk

Ernesto Anguilla	Joe Gimbel
Nina Berk	G. Lee Humphrey
Jazzmin G. Bonner	Alice Richmond
Katie Burkhart	Stuart Rose
Sasha Castroverde	Elyse Schuerman
Richard Daynard	Hannah Taytslin
Amanda Eckhoff	

## LYRIC STAGE ADVISORY COUNCIL

Janet Spitz, *Co-Chair*  
Laura Conrad Mandel, *Co-Chair*

Barry P. Chaiken, MD	David R. Miller
Carmen Chan	Baron Pugh
Christopher Cook	Shwetha Ravi
Susan Gassett	Joe Richard
Wendy Gutterson	Dick Rousseau
Michelle Landers	Emily Stidsen
Jo Frances Meyer	Ruth Whitney

# The Lyric Stage Company of Boston

Matt Chapuran Executive Director | Courtney O'Connor Artistic Director

presents

# THE PLAY THAT GOES WRONG

By

HENRY LEWIS, JONATHAN SAYER & HENRY SHIELDS

Directed by

FRED SULLIVAN, JR. °

Scenic Design, **Peter Colao**  
Costume Design, **Gail Astrid Buckley\*\***  
Lighting Design, **John Malinowski**  
Sound Design, **Dewey Delloy**

Props Artisan, **Karissa Roberts**  
Assistant Director, **Kolton Bradley**  
Production Stage Manager, **Josh Rodrigues\***  
Assistant Stage Manager, **Lucas Bryce Dixon\***

Featuring:

**Kelby T Akin\***, **Alexa Cadete**, **Nora Eschenheimer\***, **Dan Garcia**, **Mitch Kiliulis**,  
**Michael Liebhauser\***, **Marc Pierre\***, **Dan Whelton\***, **Margaret Clark**, **Patrick French**, **Matt Ryan**

Lyric Stage's 2022/23 Season sponsored by **Paul Kastner** and **G. Lee & Diana Humphrey**

Production Sponsored by **Joe Richard & René Morrisette**

Director Fred Sullivan, Jr. Sponsored by **Sam & Gretchen Shubrooks**

Cast Sponsored by **Ruth Rotundo Whitney** | Set Designer Peter Colao Sponsored by **Mary & Larry Shaw**

The video and/or audio recording of this performance by any means whatsoever is strictly prohibited.

Presented by arrangement with Dramatists Play Service.

The Mischief Production of THE PLAY THAT GOES WRONG was originally produced on the West End Stage by Kenny Wax & Stage Presence and on Broadway by Kevin McCollum, J.J. Abrams, Kenny Wax & Stage Presence.

THE PLAY THAT GOES WRONG was first presented by Mischief Theatre under the title *The Murder Before Christmas* on December 4th, 2012 at the Old Red Lion Theatre in London.

THE PLAY THAT GOES WRONG by Henry Lewis, Jonathan Sayer & Henry Shields  
© 2012, 2014 Mischief Worldwide Ltd. All rights reserved.

The Lyric Stage Company of Boston operates under the NEAT Agreement with Actors' Equity Association and is a member of NEAT [The Producers' Association of New England Area Theaters], and StageSource.

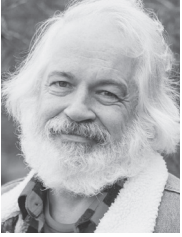
The Lyric Stage Company of Boston is supported in part by a grant from The Massachusetts Cultural Council, a state agency, and The Boston Cultural Council, a local agency which is funded by The Massachusetts Cultural Council, administered by the Mayor's Office of Arts, Tourism, and Special Events.

\*Member of Actors' Equity Association, the Union of Professional Actors and Stage Managers in the United States

\*\*Represented by United Scenic Artists, Local USA 829 of the IATSE | °Member of Stage Directors and Choreographers Society



## A NOTE FROM THE DIRECTOR



This is a guffaw play, a belly-laugh play, an LOL play—yes, a “wall-of-sound” play. The audience laughs as one and it’s a sound from which the actors gain superhuman strength. I’ve been in many, many plays like this one and directed quite a few. The key is to take it all as seriously as that marvelous ensemble of Mel Brooks’ *Young Frankenstein* did, and then open a big old trunk of SILLY—a recipe for delight. As always, we rely on the generous spirit of the audience to meet us halfway, invest in us, and be open to what we present. Comedy Tonight!

I grew up in amateur, community, and children’s theatre before the theatre became my profession. My favorite stories [in 40 years of being a professional actor and director] have always been the stories of the times it went wrong: actors going up—forgetting words, lines, their names, or missing entrances; sets and props breaking; strangers wandering across the stage or people—sometimes even the other actor—drunkenly interrupting. I can tell you stories of injuries [my foot was once cut wide open and really bleeding while playing Pseudolus in *A Funny Thing Happened on the Way to the Forum*] and then of course there’s the time my pants caught on FIRE in *Julius Caesar*....

I have assembled a cast filled with actors I know and love, and a few new-to-me actors who came to auditions and wowed us. But the leading character of this play just may, in fact, be the set. [“It’s a beast,” as the kids say.] After studying the script, I thought “We don’t need a director—we need an engineer!” Luckily for us, Peter Colao and Wooden Kiwi are both artists and engineers.

– Fred Sullivan, Jr., Director of *The Play That Goes Wrong*



THE CAST & ARTISTIC TEAM OF *THE PLAY THAT GOES WRONG*  
L to R: Front Row: Dan Garcia, Marc Pierre, Mitch Kiliulis, Kolton Bradley, Margaret Clark. Back Row: Patrick French, Matt Ryan, Nora Eschenheimer, Michael Liebhauser, Fred Sullivan, Jr., Kelby T. Akin, Alexa Cadete, and Dan Whelton.

CAST

Kelby T. Akin*	.....	Robert
Alexa Cadete	.....	Annie
Nora Eschenheimer*	.....	Sandra
Dan Garcia	.....	Jonathan
Mitch Kiliulis	.....	Trevor
Michael Liebhauser*	.....	Chris
Marc Pierre*	.....	Max
Dan Whelton*	.....	Dennis
Margaret Clark	.....	u/s Sandra/Annie
Patrick French	.....	u/s Chris/Robert/Dennis
Matt Ryan	.....	u/s Jonathan/Max/Trevor

*\*Denotes member of Actors' Equity Association, the Union of Professional Actors and Stage Managers in the United States*

RUNNING TIME

Approximately two hours, including one intermission.

**CONTENT WARNING:** *This production uses strobe lighting effects.*



**GET THE LATEST SCOOP  
and all the inside info by  
joining our email list!**

**Sign up today at:  
[lyricstage.com/sign-up-  
for-our-newsletter](http://lyricstage.com/sign-up-for-our-newsletter)**

MARK S. HOWARD

Lyndsay Allyn Cox in *Fabulation or, The Re-Education of Undine* (2022)





**Kelby T. Akin\*** (Robert) - Lyric Stage: *Death of a Salesman* (Biff), *33 Variations* (Mike), *The Understudy* (Jake), *By The Way, Meet Vera Stark* (Slavick/Brad), *Cat on a Hot Tin Roof* (Brick). The Gamm Theatre: *Hamlet* (Laertes), *Paul* (Nero), *Glengarry Glen Ross* (Ling), *Romeo and Juliet* (Mercutio), *Much Ado About Nothing* (Don John). Trinity Repertory Company: *Richard III* (Ratcliffe), *A Christmas Carol* (Ghost of Christmas Present), *All The King's Men* (Dolph Pillsbury/Hugh Miller). Commonwealth Shakespeare Company: *Cymbeline* (Cloten), *Our American Hamlet* (June Booth/John Sleeper Clark), *As You Like It* (Charles/Willam). Film and Television: *Patriots Day*, *Detroit*, *Grey Lady*, *The Heat*, *We Don't Belong Here*, *Crooked Arrows*, *Castle Rock*. Kelby won an IRNE for his work as Biff in *Death of a Salesman*.



**Alexa Cadete** (Annie) - Lyric Stage: Debut. Guerilla Opera: *I Give You My Home* (Rose's Mother). Studio Theatre Worcester: *Doubt*, *A Parable* (Sister Aloysius). Intermittent Theatre Company: *Sisters* (Louise), *Titus Andronicus* (Demetrius). Green Mountain: *One Flew Over the Cuckoo's Nest* (Nurse Ratched), *Waiting For Lefty* (Agate Keller), *Hurly Burly* (Donna), *Major Barbara* (Rummy), *The Dining Room* (2nd Actress). A graduate of Green Mountain College, Alexa has trained at the Dorset Theatre Festival Conservatory and the Commonwealth Shakespeare Company. | @alexacadete | alexacadete.com.

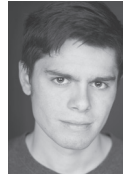


**Nora Eschenheimer\*** (Sandra) - Lyric Stage: Debut. Commonwealth Shakespeare Company: *The Tempest* (Miranda), *Cymbeline* (Imogen). The Gamm Theatre: *As You Like It* (Rosalind), *A Midsummer Night's Dream* (Helena), *A Lie Agreed Upon* (Thea Hovstad), *The Importance of Being Earnest* (Gwendolen Fairfax), *The Winter's Tale* (Perdita). Shakespeare Center of Los Angeles: *Love's Labour's Lost* (Princess of France). Greystone Mansion Theater: *Twelfth Night* (Viola). Ocean State Theatre Company: *Inherit the Wind* (Rachel Brown). Nora received an Elliot Norton Award nomination for her performance as Imogen in Commonwealth Shakespeare Company's production of *Cymbeline*. | @noraeschenheimer | noraeschenheimer.com.



**Dan Garcia** (Jonathan) - Lyric Stage: Debut. The Gamm Theatre: *Describe the Night* (Feliks), *A Midsummer Night's Dream* (Philostrate/Cobweb), *A Lie Agreed Upon* (Townsperson). Out Loud Theatre: *Tartuffe* (Damis/Ceante). Seed and Ivy Theatre: *Bed*

*Time Stories* (Rudy). Community College of Rhode Island: *Fool for Love* (Eddie), *Lone Star* (Roy), *Bad Jews* (Jonah), *Crimes of the Heart* (Barnette Lloyd). Dan is a graduate of The Community College of Rhode Island. | @dan\_\_garcia



**Mitch Kiliulis** (Trevor) - Lyric Stage: Debut. Mass Arts Center: *Phyro-Giants* (Joey), *Moon Over Buffalo* (Paul), *Dead Man's Cell Phone* (Dwight). Vanilla Box Productions: *Cannibals of the Heart* (Fipp). Eventide Theatre Company: *Twain by the Tale* (Ensemble). Pilgrim Soul Productions: *American Buffalo* (Bobby). Mitch is a proud graduate of the Roger Williams University Theatre Department and the Stella Adler Studio of Acting Summer Conservatory.



**Michael Liebhauser\*** (Chris) - Lyric Stage: Debut. The Gamm Theatre: *Describe The Night* (Isaac Babel), *A Midsummer Night's Dream* (Titania), *Assassins* (Czolgosz), *The Night Watch* (Fraser/Cole), *Incognito* (Henry Mason/Michael). Theater at Monmouth: *Antony and Cleopatra* (Antony), *Comedy of Errors* (Antipholus of Syracuse/Ephesus), *Lysistrata* (Magistrate). Quintessence Repertory Theater: *The Cure at Troy* (Chorus), *The Wizard of Oz* (Guard/Monkeys/Winkles/Mayor of Munchkin City), *King Lear* (Albany). Interlochen Shakespeare Festival: *King Lear* (Edmund), *Richard III* (Richard), *Romeo and Juliet* (Tybalt), *Much Ado About Nothing* (Don Pedro), *A Midsummer Night's Dream* (Lysander). Short North Stage: *Young Frankenstein* (Fredrick), *Noises Off* (Gary). Michael is a graduate of The University of Minnesota/Guthrie Theater BFA Actor Training Program, and of Interlochen Arts Academy. | MichaelLiebhauser.com



**Marc Pierre\*** (Max) - Lyric Stage: *Peter and the Starcatcher*. The Gamm Theatre: *An Octoroon*, *A Midsummer Night's Dream*, *Gloria*. Huntington Theatre: *Rosencrantz and Guildenstern Are Dead*, *Milk Like Sugar*. Boston Playwrights Theatre: *Gone Nowhere*. Florida Repertory Theatre: *Fences*. Kitchen Theatre Company: *Brawler*. Actors Theatre of Louisville: *Airness*. Central Square Theatre: *When January Feels Like Summer*. Gloucester Stage: *The Flick*. TV/Film Credits: *Castle Rock* and *Twelve* (Joel Schumacher, Director.) Marc has a BFA from Emerson College and is a recipient of the Isabel Sanford Scholarship and Emerson College's Acting Area Award. | marcalexanderpierre.com



**Dan Whelton\*** (Dennis) - Lyric Stage: *Anna Christie* (Mat Burke), *Who's Afraid of Virginia Woolf?* (Nick), *One Man, Two Guv'nors* (Stanley Stubbers). Hartford Stage: *The Learned Ladies of Park Avenue* (Butler), *A Christmas Carol* (Marvel/The Ghost of Christmas Future).

Hartford TheaterWorks: *Take Me Out* (Jason Chenier). Central Square Theater: *Operation Epsilon* (von Weizsacker), *Les Liaisons Dangereuses* (Valmont). Majestic Theater: *Long Day's Journey into Night* (Edmund), *Million Dollar Quartet* (Carl Perkins), *Almost, Maine* (Ensemble). SpeakEasy Stage Company: *The History Boys* (Dakin). Film and Television: *Ghosts of Girlfriends Past*, *The Mystery of Matter*. Dan is a graduate of Eastern Connecticut State University and is an IRNE and Elliot Norton Award winner.



**Margaret Clark** (Sandra/Annie Understudy) - Lyric Stage: *In Any Face* (Larysa). Brown Box Theatre Project: *Much Ado About Nothing* (Beatrice), *As You Like It* (Rosalind). Greater Boston Stage Company/Front Porch: *The Three Musketeers* (Milady). SpeakEasy Stage

Company: *Heroes of the Fourth Turning* (Emily/Teresa u/s). Huntington Theatre: *Rosencrantz and Guildenstern Are Dead*, *Romeo and Juliet*. When not acting, Margaret also works as a fight and intimacy choreographer. Favorite choreography credits include *Black Superhero Magic Mama* with Company One/ART, *Dry Land* and *Spring Awakening* with Tufts, and *Our Dear Dead Drug Lord* with Off The Grid (World Premiere).



**Patrick French** (Chris, Robert, Dennis Understudy) - Lyric Stage: Debut. Apple Tree Arts: *The Shadow Box* (Joe). SouthCity Theater Company: *Two Rooms* (Walker Harris). Boston Theater Marathon: *The Campaign* (Johnson). ImprovBoston: *Gorefest III: The Gruesome Tale of Penny Dreadful* (Darius), *Gorefest IV: Gross Encounters of the Alien Kind* (Dale the High School Gym Teacher), *Gorefest V: Blood on the Bayou* (Randall the Effeminate Tenor), *Gorefest VII: The Worster Seed* (Hapless Stepfather), *Gorefest X: 28 Days Latte* (Derek the Hipster Barista). Film and Television: *Hocus Pocus 2*, *Olive Kitteridge*. Patrick French has been performing as an actor and comedian since 2002. | @j.patrick.french

WORLD PREMIERE

A CHRISTMAS CAROL

BOOK NOW!

BY CHARLES DICKENS

ADAPTED AND DIRECTED BY COURTNEY SALE

NOV 30-DEC 24

MERRIMACK REPERTORY THEATRE  
WWW.MRT.ORG | 978.654.4678

PRESENT

HOW DO YOU MEASURE A YEAR IN A LIFE?

BOOK, MUSIC & LYRICS BY JONATHAN LARSON

THE UMBRELLA STAGE COMPANY

NOV 11 - DEC 4

TheUmbrellaArts.org



**Matt Ryan** (Jonathan/Max/Trevor Understudy) – Lyric Stage of Boston: *The Book of Will* (Marcus/Ralph/Ed u/s). Fresh Ink Theatre: *Martha's (b)Rain-storm* (Damien Argus). Old State House: *Blood On the Snow* (John Hancock). The Longwood Players: *Clybourne Park* (Karl/Steve), *Rosencrantz and Guildenstern Are Dead* (Guildenstern). American Repertory Theatre: *The Donkey Show* (Bouncer). Matt is a graduate of Emerson College with an MA in Theater Education.

**Henry Lewis, Jonathan Sayer, and Henry Shields** (Playwrights) – Henry, Henry, and Jonathan met while training at The London Academy of Music and Dramatic Art (LAMDA). All core members of Mischief Theatre, they had already worked in comedy together for several years before they started out as a writing team. The three's first piece was *The Play That Goes Wrong* (winner – Best New Comedy – Olivier Awards and What's On Stage Awards). *Peter Pan Goes Wrong* was the trio's second piece, opening in November 2014 for a UK tour before a hugely successful West End season in Christmas 2015. Henry, Henry, and Jonathan recently adapted the script of *Peter Pan Goes Wrong* for the BBC, which was filmed

with the original West End cast. They were invited back to wreak more havoc at the BBC in 2017 with *Christmas Carol Goes Wrong* on BBC1. *The Comedy About A Bank Robbery* marks their third writing project as a trio and earned them another Olivier Nomination. | @mischief-comedy | mischieftheatre.co.uk

**Fred Sullivan, Jr.**\* (Director) – Lyric Stage: Ben Jonson in *The Book of Will* and Tim in *The Cake*. Fred was raised in Chelsea, MA and moved to Providence in 1983 to study for 2 years with Trinity Repertory Company. He then became a resident company member for 35 years and 130 productions. Fred has also worked with Actors Theatre of Louisville, Berkeley Repertory Theatre, Dallas Theatre Center, Commonwealth Shakespeare Company, The Gamm Theatre, American Stage Festival, Theatre by the Sea, Ocean State Theatre Company, Cape Rep Theatre, and the Bread Loaf Acting Ensemble. He has directed for Trinity Repertory Company, The Gamm Theatre, Ocean State Theatre Company, Commonwealth Shakespeare Company, and RISD. His production of *Awake and Sing* at The Gamm Theatre won the Elliot Norton Award for Outstanding Production. Fred teaches acting at The Gamm Theatre and at RISD.



**Puppet Showplace Theater**

## Great performances for all ages!



- A different show every week
- Puppet-making workshops
- *Puppets at Night* for adults & teens

[www.puppetshowplace.org](http://www.puppetshowplace.org)

Photo: "Cinderella" by Tanglewood Marionettes, Dec 28-30

Front Porch Arts Collective Presents

# CHICKEN & BISCUITS

BY DOUGLAS LYONS  
DIRECTED BY LYNDSAY ALLYN COX  
HOSTED BY SUFFOLK UNIVERSITY

DECEMBER 9, 2022 - JANUARY 8, 2023

THE MODERN THEATRE  
525 Washington Street

Tickets on sale November 8  
Visit [frontporchartarts.org](http://frontporchartarts.org)



**Peter Colao** [Scenic Design] – Lyric Stage: *Private Lives, Good Evening*. New Repertory Theatre: *Sweeney Todd, The Threepenny Opera, Into the Woods, A Christmas Carol, Dessa Rose, Cabaret, Indulgences, Little Shop of Horrors*. Up You Might Race Theatre Company: *Fences, Joe Turner's Come and Gone, Patience of Nantucket, 409 Edgecombe Ave*. Reagle Players: *Joseph and the Amazing Technicolor Dreamcoat, Christmastime, Once Upon a Mattress, A Little Bit of Ireland, Big River, Showboat, My Fair Lady*. Multiple IRNE Award nominations: [*Sweeney Todd, Joe Turner's Come and Gone*]. Co-owner of Wooden Kiwi Productions, building almost all shows for Lyric Stage since 2007, as well as many theater and dance companies in Greater Boston. Two degrees from MIT [BSAD 1989, M.Arch 1993], Production Manager for Opera of the Future Group at MIT Media Lab, touring many projects worldwide. | [woodenkiwi.com/kiwiDesign/](http://woodenkiwi.com/kiwiDesign/)

**Gail Astrid Buckley\*\*** [Costume Design] – Lyric Stage: *Agatha Christie's Murder on the Orient Express, My Fair Lady, Cat on a Hot Tin Roof*, and *Souvenir* among many others. Recent designs include *As You Like It* for Boston Conservatory, and Assistant Designer for *Finestkind*, a film starring Ben Foster and Tommy Lee Jones. Her work [Assistant Costume Design] can also be seen in

the Netflix comedy *About Fate* starring Emma Roberts. Upcoming theater work includes *Little Women* at The Greater Boston Stage Company and *A Christmas Carol* at the Hanover Theatre. Gail has received two Elliot Norton Awards and two IRNE Awards for Costume Design. Gail is a proud member of United Scenic Artists Local 829.

**John Malinowski** [Lighting Designer] – Lyric Stage: *Road Show, City of Angels, Working, The Chosen, The Temperamentals, Animal Crackers, Side Man, When Pigs Fly, and The Heiress*. Central Square Theatre: *Ada and the Engine, The Crucible*. Harbor Stage Company: *Frozen*. Merrimack Repertory Theater: *Oceanside, Visiting Mr Green*. Actors' Shakespeare Project: *Cherry Orchard, A Midsummer Night's Dream, King John, Hamlet, Julius Caesar*. SpeakEasy Stage Company: *Kiss of the Spiderwoman* [IRNE Award], *The Seafarer, Caroline, or Change, Take Me Out*. John has received three IRNE Awards, a NEA/TCG Design Fellow [2000–2002], and the Elliot Norton Award for Outstanding Design in 1996. He has taught at Northeastern, Suffolk University and Brandeis.

**Dewey Dellay** [Sound Design] – Lyric Stage: *Be Here Now*. SpeakEasy Stage Company: *The Inheritance*. Gloucester Stage Company: *Mr Fullerton, Between the*

Moonbox Productions presents

# TORCH SONG

by HARVEY FIERSTEIN



DECEMBER 2-23  
AT THE BCA CALDERWOOD PAVILION  
ROBERTS / STUDIO THEATRE

EVERY TICKET BENEFITS



TICKETS AT [BOSTONTHEATRESCENE.COM](http://BOSTONTHEATRESCENE.COM)

A Holiday Tradition Returns for its 52nd Year!

# Midwinter Revels

A Solstice Celebration  
*Tales from Ellis Island*

Directed by Patrick Swanson  
Elijah Botkin, Music Director

DECEMBER 16 - 28, 2022  
Sanders Theatre, Cambridge, MA  
Tickets [boxoffice.harvard.edu](http://boxoffice.harvard.edu)  
or call 617.496.2222

VIRTUAL EXTENDED RUN  
DECEMBER 29 - JANUARY 8  
Tickets [Revels.org/midwinter](http://Revels.org/midwinter)



*Sheets, Grand Horizons.* Actors' Shakespeare Company: *The Merchant of Venice.* Dewey is the recipient of the Elliot Norton Award for Outstanding Design and an IRNE Award for Best Sound Design. Other credits include composing for five seasons of *Our America with Lisa Ling, National Geographic Explorer, Hans Zimmer's Bleeding Fingers* team, and numerous digital children's books by Live Oak Media. | [deweydellay.com](http://deweydellay.com)

**Josh Rodrigues\*** (Production Stage Manager) – Lyric Stage Debut. Greenbrier Valley Theatre: *A Midsummer's Night, Murder for Two.* Shakespeare & Company: *Much Ado About Nothing.* New Repertory Theatre: *Thurgood.* North Shore Music Theatre: *Jersey Boys, Jekyll and Hyde, Peter Pan.* Lake Dillon Theatre Company: *The Underpants.*

**Lucas Bryce Dixon** (Assistant Stage Manager) – Lyric Stage Company: *A Gentleman's Guide to Love and Murder.* Huntington Theatre: *Joe Turner's Come and Gone, Common Ground: Revisited, The Bluest Eye, Hurricane Diane, Yerma.* SpeakEasy Stage Company: *Heroes of the Fourth Turning, BLKS* (Covid-19 Safety Manager). New Repertory Theatre: *Hair, Oliver!, Trayf, Nixon's Nixon.* Troika Entertainment: *Spamilton.* Lucas graduated from Ithaca College in 2018 with a BA in Theatre Studies.

GREATER BOSTON STAGE COMPANY

*Little Women*  
THE BROADWAY MUSICAL

November 25 - December 23  
[greaterbostonstage.org](http://greaterbostonstage.org) | 395 Main Street, Stoneham, MA

**Karissa Roberts** (Props Artisan) – Lyric Stage: Debut. Barnstormers Theatre (Scenic Charge Artist): *Into the Woods, The Legend of Georgia McBride, Black Coffee, Silent Sky, Lucky Stiff.* Karissa is a recent graduate of Plymouth State University where she studied fine art, graphic design, and art history. | [@artworkbykarissa](https://www.instagram.com/artworkbykarissa) | [artworkbykarissa.weebly.com](http://artworkbykarissa.weebly.com).

**Kolton Bradley** (Assistant Director) – Lyric Stage: Debut. A New York-based director, actor, and teacher, Kolton is an alum of in Lincoln Center Theater's Directors Lab and the Observership Program with Stage Directors and Choreographers Society (SDC). He has directed or taught at several theatre companies, including Huntington Theatre Company, Gloucester Stage Company, SpeakEasy Stage Company, New Repertory Theatre, The Harlem School of the Arts, and The New Victory Theater in Times Square. His acting credits include *The Inheritance, Rent, Dreamgirls, Ragtime, Hairspray, Once On This Island, Side Show, Macbeth* and *Measure for Measure*. Training: The British Academy of Dramatic Arts; BFA: University of Michigan; MFA Directing: Boston University. Kolton is a proud member of AEA and SDC. | [KoltonBradley.com](http://KoltonBradley.com)

**Matt Chapuran (Executive Director)** – Matt was Managing Director of the Lyric Stage from 2014 to 2018. He was previously Managing Director of Stoneham Theatre, where he ran the 2010 Boston Marathon with Producing Artistic Director Weylin Symes in support of Stoneham Theatre's educational mission. Matt has also served as Director of Development for Conservatory Lab Charter School and managed institutional giving for The Huntington Theatre. At the Nora Theatre Company, Matt was the Managing Director during the inception of a capital campaign that ultimately led to the construction of the Central Square Theater. Matt is currently co-president of NEAT (New England Area Theatres), a bargaining collective of 12 regional theatres, and is a member of the Create the Vote Coalition and its Policy Platform working group. He currently teaches Arts Management at Emerson College. He has performed, taught, and directed improvisation for two decades, including as a part of Babson College's MBA program, as one half of The Angriest Show in the World. His short stories have appeared online in *The Bookends Review, Bridge Eight, Prose Online,* and *Vari-ant Literature.* He lives in Roslindale with his wife and their three daughters.

**Courtney O'Connor (Artistic Director)** – Courtney was named Artistic Director in 2020 after joining the Lyric Stage as Associate Artistic Director in 2018. She has directed several pieces for the Lyric Stage, including *The Book of Will, Be Here Now, The Cake, Red Hot Patriot,*

THE  
**LYRIC STAGE**  
YOUR THEATRICAL HOME

**JAN 6 - FEB 5**

When success  
& failure collide  
can a young  
Rachmaninoff  
rediscover his  
musical genius?



# PRELUDES

BY  
**DAVE MALLOY**

DIRECTED BY  
**COURTNEY O'CONNOR**

MUSIC DIRECTOR,  
**DAN RODRIGUEZ**

**LYRICSTAGE.COM | 617.585.5678**

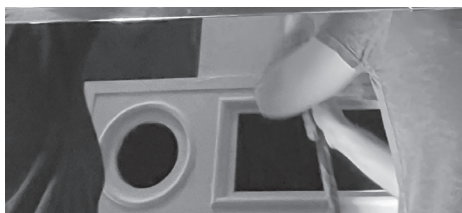
2022/23 SEASON SPONSORS:  
Paul Kastner  
G. Lee & Diana Humphrey

PRODUCTION SPONSORS:  
Nina & Don Berk



**MC** Mass  
Cultural  
Council

**BCC** BOSTON  
CULTURAL  
COUNCIL



# IT'S YOUR THEATRICAL HOME.

Thank you for the  
wallpaper & the drapes.

At Lyric Stage, everything you see is built from the ground up. We hire locally for our directors, designers, actors, and technicians. Every prop and every costume is specially chosen for the performance you are about to see.

Please make a tax-deductible donation to the Lyric Stage this holiday season. Your generous contributions help us dream big as we plan next year's season of plays and musicals, bringing the best of Boston's veteran and rising theatrical talent to you.





**HOW IT ALL FALLS DOWN:****PETER COLAO****How did you get into set design?**

I made the assessment in 6th grade that since I liked both math and art, I should become an architect. My route put me in the technical theater crew in high school, and I ended up designing my first show in 10th grade. I continued through high school, college and graduate school, and after two architecture degrees from MIT, I realized where my passions really lay. Sorry buildings....

**What set are you most proud of that you have designed?**

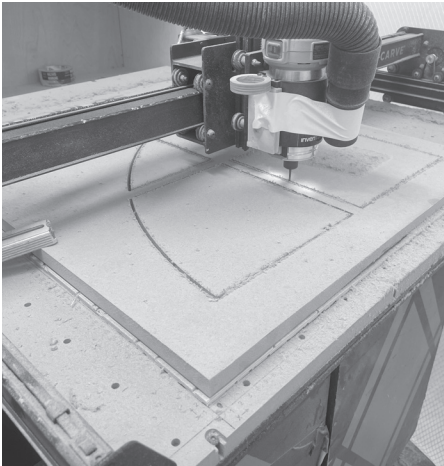
I like sets that are contraptions (thus this one). My first show with New Repertory Theater was *Sweeney Todd* in a very small and intimate space. To squeeze everything in, I made an eccentric magic unfolding box in the center of a turntable, that transformed continuously throughout the show. Putting that show so close and intimate to the audience really made magic.

**How did you approach designing the set for *The Play That Goes Wrong*?**

You've seen that magic trick where one pulls 16 or forty rabbits out of a hat? The design of this show followed a similar path.

**What has been the most fun aspect of working on the show?**

It's not possible to not have fun working on it. There is a spirit of "the show must go on" that lives and breathes in this, and we're all along for the ride. I'm old enough to appreciate that this is an E-ticket ride, but it certainly is a hoot.



and *Stones in His Pockets*. For the past twenty years, Courtney has been an affiliated faculty member with Emerson College, where she has taught directing and acting, directed productions for Emerson Stage, and headed the pre-college summer intensive acting and musical theatre programs. In addition to directing for theatres and universities, Courtney has directed multiple site-specific productions at locations including, Mount Auburn Cemetery and Boston's Old State House. Through her work with the Coyote Theatre Project, she oversaw the creation of more than 200 ten-minute plays written by Boston youths. Courtney has received the Elliot Norton Award for her work as the Associate Director on the Lyric Stage's production of *The Life and Adventures of Nicholas Nickleby* and the Alan L. Stanzler Award for Excellence in Teaching. Courtney holds an MFA in Theatre Education and Applied Theatre from Emerson College.

**\*Actors' Equity Association (AEA)** – was founded in 1913. The first of the American actor unions, its mission is to advance, promote and foster the art of live theatre as an essential component of our society. It represents more than 40,000 actors, singers, dancers, and stage managers working in hundreds of theatres across the USA. Members are dedicated to working in the theatre as a profession and upholding the highest artistic standards. AEA negotiates wages, working conditions, and provides a wide range of benefits, including health and pension plans. Through its agreement with Equity, this theater has committed to the fair treatment of the actors and stage managers employed in this production. AEA is a member of the AFL-CIO and affiliated with FIA, an international organization of performing arts unions. | [actorsequity.org](http://actorsequity.org)

**\*\*United Scenic Artists (USA-Local 829)** – is a labor union representing designers and artists in the entertainment industry. Membership includes the security of working under a collective bargaining agreement, better working conditions and wages, and access to health insurance, a pension plan, an annuity plan, and a 401(k). Members are artists and craftspeople working in film, theatre, opera, ballet, television, industrial shows, commercials, and exhibitions. | [usa829.org](http://usa829.org)

**°Stage Directors & Choreographers Society (SDC)** – is the theatrical union that unites, empowers, and protects professional Stage Directors and Choreographers throughout the United States. Our mission is to foster a national community of professional stage Directors and Choreographers by protecting the rights, health and livelihoods of all our Members; to facilitate the exchange of ideas, information and opportunities, while educating the current and future generations about the role of Directors and Choreographers; and to provide effective administrative, negotiating and contractual support. | [sdcweb.org](http://sdcweb.org)

#### ADDITIONAL PRODUCTION STAFF

Head Electrician, **Gabriel Goldman**

Stunt Coordinator/Fight Captain, **Michael Liebhauser**

Wardrobe, **Hannah Schurman**

Additional Props, **Kelly Smith**

Run Crew, **Hazel Peters, Talene Pogherian**

**Special thanks to Seth Fisher** for the technical design of set elements.

## ABOUT YOUR LYRIC STAGE COMPANY OF BOSTON VISIT

For more on how to contact us, Box Office hours, ticketing & performance policies, and other FAQs go to [lyricstage.com](http://lyricstage.com) & click on Your Visit.





## Thanks for putting art in the heart of the community

Bank of America recognizes Lyric Stage Company for its success in bringing the arts to performers and audiences throughout the community. We commend you on creating an opportunity for all to enjoy and share a cultural experience.

Visit us at [bankofamerica.com/about](https://www.bankofamerica.com/about).

**BANK OF AMERICA** 

Generous friends like you advance our mission to produce and present live theatre in Greater Boston with an intimate approach that promotes inclusivity and connection. The Lyric Stage leads an effort to integrate live theater and theater education into the lives of all residents of greater Boston. We extend our sincere thanks to those who make our work possible. Thank you for giving to YOUR theatrical home.

This list has been updated to reflect gifts through September 30, 2022. For questions, concerns, or details please contact Sarah@LyricStage.com.

**PLAYWRIGHT'S CIRCLE****[\$25,000+]**

Anonymous  
The Estate of Joan S. Greenberg  
G. Lee & Diana Humphrey  
Paul Kastner  
Massachusetts Cultural Council  
The Shubert Foundation  
Yawkey Foundation

**ARTISTIC DIRECTOR'S****CIRCLE [\$15,000 - \$24,999]**

Bank of America Charitable  
Foundation  
Nina & Don Berk  
David Crandell &  
Wendy Gutterson  
Tim & Linda Holiner  
Sharon & John Parisi  
Ron Sudol  
Richard & Sally Zeckhauser

**PRODUCER'S CIRCLE****[\$10,000-\$14,999]**

Judith & James Barr  
BPS Arts Expansion Fund  
at EdVestors  
Brookline Bank  
The Church Home Society, Inc.  
Mary K. Eliot  
Jo-An Rolfe Heileman  
James G. Kamitsets &  
Cynthia Bencal  
Miffilin Memorial Fund  
Physician Management  
Resources  
Joe Richard &  
René Morrisette  
Alice Richmond &  
David Rosenbloom  
Sam & Gretchen Shubrooks  
Robert Volante  
Mary & Doug Woodruff

**DIRECTOR'S CIRCLE****[\$5,000-\$9,999]**

Anonymous [2]  
Howard & Katherine Aibel  
Foundation  
Ernesto & Melissa Anguilla  
Bessie Pappas Charitable  
Foundation  
Richard & Carol Daynard  
JoAnne Walton Dickinson &  
John Dickinson-Eaton  
Amanda Eckhoff & Randall Hall

Glenda & Bob Fishman  
Susan H. Gasset &  
Rick Dennen  
Joseph Gimbel &  
Joanne Strobel  
Hamilton Company Charitable  
Foundation  
The Helen G. Hauben  
Foundation  
Bruce Hauben & Joyce Brinton  
Karen Johansen &  
Gardner Hendrie  
Jan & Stuart Rose  
Richard & Mary Scott  
State Street Bank Foundation  
Tiny Tiger Foundation

**BENEFACTOR'S CIRCLE****[\$2,500-\$4,999]**

Diane & Fred Berk, *In Honor of  
Nina & Don Berk*  
Carol J. Bresler &  
Carolyn A. Billinghamurst  
The Bresler Family Foundation  
Katharine Burkhart  
Peggy Davis  
Robert Kuhn & Darcy Devney  
Google, Inc.  
Garth & Lindsay Greimann  
Massachusetts Convention  
Center Authority  
Massachusetts Development  
Finance Agency  
Jo Frances Meyer  
Stephen & Margaret Ober  
The Rodgers Family  
Foundation  
Megan Rokop  
Richard Rousseau  
Allison K. Ryder &  
David B. Jones  
Mary & Larry Shaw  
David & Deborah Wang  
Ruth Rotundo Whitney  
Christopher R. Yens &  
Temple Gill  
Michael Zody

**GUEST'S CIRCLE****[\$1,000-\$2,499]**

Anonymous [2]  
Cynthia Aber  
Peter Amblor & Lindsay Miller  
Mary Antes  
Patricia Aronson  
Lee & Michael Behnke

Blackbaud Giving Fund  
Bona Fide Masks Corp.  
Jazzmin G. Bonner  
Jonathan & Dixie Borus  
Cara & Tony Casentino  
Matt Chapuran &  
Michelle LeBlanc  
The James D. & Veronica E.  
Chesterton Family  
Foundation  
Carolee Coleman  
Charles & Nancy Curtiss  
Jean Chapuran Durling,  
*In Honor of Matt Chapuran*  
William & Susan Fink  
Peter & Myrna Finn  
Elaine Fong & Janet Yankwich,  
*In Honor of Janet Spitz*  
Ray & Joan Green  
Sarah & Eric Hanselman  
Vanessa Hayden  
Tom & Nancy High  
Agnes & John Howell  
Andrea Humez  
Ruth A. Hunter  
Edgar Knudson & Louis Mula  
Will & Anastasia Lyman  
Somerset Arts/Macdonald CGF  
Jack & Dottie MacKeen  
Sharon A. Miller  
Martha C. Narten  
Louis & Deidre O'Brien Pepi  
Carol O'Hare &  
Walter McDonald  
Arthur & Athena Papas  
Gustavo Pena & Kerry Weiss  
Carla Pepka  
Timothy Markoe Rivinus  
Jean Rosenberg &  
Peter Southwick  
Elyse & Donald Schuerman  
Susan & Michael Scott  
Marilyn M. Shesko  
Gayle Smalley & Judith Curby  
Janet Spitz  
David & Ann St. Germain  
Samuel Stern &  
Charlotte Chase  
Jan & Chris Swain  
The Village Bank  
Jean Walsh & Graham Davies  
Joelle & Harvey Wartosky  
Jane & Michael Wojcik  
Drs. Katharine & Marshall Wolf

**DONOR'S CIRCLE****[\$500-\$999]**

Anonymous, *In Memory of  
Larry Cohen*  
Sydney & Norman Abend  
Margaret Avery  
Michael Aylward  
Jeannine M. Ayotte  
Eddie & Bob Baker  
James Berriman  
Edward Boesel  
Gregg & Nell Borgeson,  
*In Honor of Audrey VanDuyn  
& Annabel Margolis*  
Susan Brown  
Marianne Callahan  
Don & Susan Casey  
Sasha Castroverde  
Carmen Chan  
Nancy & Ron Chapuran  
Ellen Colton  
Kristina Crique  
Sarah E. deLima  
Judy Dillman  
Zach & Willis Durant-Emmons  
Eastern Bank Charitable  
Foundation  
Alain & Rebecca Eudarc  
Lisa & Barry Fireman  
Elaine & Kevin Foley  
Donald Goldstein  
Phillip & Barbara Graceffa  
Christine Dugan &  
Frank Graves  
Grace & Bill Gregor  
G. Neil & Anne Harper  
Gordon Holmes  
Emily Anne & Jeffrey Jacobstein  
Paul & Alice Johnson  
Chris & Joanne Johnston  
Alexandra Pollard &  
Jeffrey Kapell  
Carol & Jim Kent  
Joan Kinne  
Susan A. Lester  
Peter Loewinthan  
John & Judith Mitchell  
Frank Neely & Ron Parmakis  
Leslie Newman & Mike Caruso  
Lowell Partridge  
Bob & Jackie Pascucci  
Daniel Penni  
Andrea & Russel Pergament  
Helen C. Powell  
Joe Quinn & Diane Juliar



THE LYRIC STAGE  
YOUR THEATRICAL HOME

Give the  
gift of  
year-round  
Joy.



LYRICSTAGE.COM | 617.585.5678

Congratulations to the team behind  
The Play That Goes Wrong  
from all of us at J.P. Licks!



20220247



**J.P. LICKS**  
*Ice Cream • Yogurt • Coffee*

It all feels so right, let's celebrate!

Enjoy \$1.00 off your entire purchase at any  
J.P. Licks location with this coupon.

Good through June 30, 2023

\*no cash value\*cannot be combined with any other offer\*

\*one coupon per order\*



David Reiner & Cynthia Eid  
 Laura Rosen  
 Carol & Wally Rowe  
 Salesforce  
 Schrupka Fund  
 Chuck Schwager & Jan Durgin  
 Ellen L. Simons Fund at  
*The Boston Foundation*  
 William & Margaret Smith  
 Hannah Taytslin &  
 Michael Devine  
 Steve & Donna Tritman  
 Gary Valaskovic  
 Ellen Westheimer  
 Mary Allen Wilkes  
 Wilson Butler Architects, Inc.  
 Christina Young &  
 Michael Sampson  
 Linda & Mark Zaitlin

**SUPPORTER'S CIRCLE**  
**[\$250-\$499]**

Anonymous [4]  
 Miki C. Akimoto  
 Nathalie Alpert, *In Honor of*  
*Jennifer Alpert*  
 Berndt Anderson  
 Sandy & Jim Annis  
 Apple Inc.  
 David & Ann Marie Asadoorian  
 Dr. Nancy & Christopher Baker  
 Robert & Lei Sun Berk  
 Barry Bluestone  
 Garen Bohlin &  
 Diana Sorensen  
 Margaret Brooke  
 Janet Burns  
 Victor & Mary Calcaterra  
 June Carter &  
 Barbara Fragopoulos  
 Barry P. Chaiken, MD  
 Suzanne Chapman  
 Ellen Clark  
 Renate Clasby  
 Leslie Colello  
 James Collins  
 Theodore & Carolyn Colton  
 Paul A. Curtis  
 Jon & Kim Davis  
 Mary Kay & David Donovan  
 Lee Emerson  
 Jane & Arnold Epstein  
 Elaine Epstein & Jim Krachey  
 Martha Erickson, *In Memory of*  
*Karen S. Sturges*  
 Phyllis & Sumner Fanger  
 Mark Farber & Sherry Katz  
 Kevin Fennessy  
 Susan Fliegel, *In Memory of*  
*Dr. Harold Smelson*  
 David & Karen Gaylin  
 Chris Gaucher &  
 Roger Ferguson, Jr.  
 David & Karen Gaylin  
 Roberta Gerson

Laurie Gould  
 Sylvia E. Green  
 Michael Hall  
 Peter Haydu & Dona Sommers  
 Eva Herndon  
 Jessica Herzog  
 Alan Hirshfeld & Sasha Helper  
 Clark & Susan Jarvis  
 Janis Kapler  
 Carol & Jim Kent  
 Daniel Kozar  
 Sharen & Andrew Leonard  
 Ronald & Sandra Levy  
 Reuel & Malvina Liebert  
 Tina Lieu  
 Barbara Low  
 David MacDougall  
 Julia MacLaughlin  
 David & Kathy Maister  
 Jorge & Fran Martinez,  
*In Memory of Margarita*  
*Damaris Martinez*  
 Lee Martz  
 Richard & Beth McLaughry  
 Frank Mead & Penny Bragonier  
 Joseph & Evy Megerman  
 Esther Messing  
 Joan Moynagh & Adam Sholley  
 Tom Norris  
 Patrick & Lynn O'Shea  
 PayPal Giving Fund  
 Benjamin & Sylvia Perlman  
 Bob & Paula Pickett  
 Margaret White Plum  
 Terry & Maggie Rioux  
 Douglas Shaheen & James  
 Rodenmacher  
 Roland W. Roy, *In Memory of*  
*Bruce C. McCarthy*  
 Roberta Rubin & Don Abrams  
 Susan E. Rudd  
 Sherry Ryder  
 Alan & Leslie Schwartz  
 Jacqueline Shina  
 Andrea Shirley &  
 Joyce Richmond  
 Carole & Jack Skowronski  
 Barbara & Alan Smith  
 Sandra Spanier &  
 Charles Merrill  
 Martha Stearns  
 Marylen Sternweiler  
 Emily & Andrea Stidsen  
 Sandra & Philip Stryfal  
 Thomas Chesterton &  
 Janice Tilson  
 Robert & Leslie Turner  
 Patricia Vinter  
 Janice Wester  
 Jerry & Barbara Wood  
 Sonja Yates  
 The Zar-Kessler Family Fund  
 Robert & Shirley Zimmerman  
 Elizabeth & Andrew Zucker

**FRIEND'S CIRCLE**  
**[\$100-\$249]**

Anonymous [3]  
 Rosalie Abrams  
 Laura Adams  
 Kathleen Almand  
 Joel & Judith Alson  
 Miriam Marie Ariel  
 Chris Bailly  
 Paula G. Barta &  
 William Lee Roberts  
 Marcia Bartusiak & Steve Lowe  
 Betty Blume & Cyrus Hopkins  
 Victor & Iona Bonneville  
 Lynn Borkowski  
 Susan Britt  
 Fred Brustman  
 Charles R. Carr  
 Arthur Carver  
 Ralph Chadis  
 David Chosiad &  
 Paula Thompson  
 Alden Clark  
 David Clark &  
 Dr. Sara Lundquist  
 Dorothy Clawson  
 Gretchen Conklin  
 Joseph & Anne O'Connor  
 John Cornwall  
 Paula V. Cortes  
 Harold S. Crowley, Jr.  
 Yashoda Dadkar  
 Debbi Darling  
 Rochelle Dein  
 Donald E. Denniston  
 Janet Distasio  
 Philip Dooher  
 Joan Doucette  
 Edward & Monica Driggers  
 Joan Dubis  
 Peter & Jana Dublin  
 John M. Dugan &  
 Carol Baffi-Dugan  
 Lisa Dyer  
 Ron & Zina Eisenberg  
 Norma Elias & Saul Toby  
 Deanne England  
 Carol & Lewis Epstein  
 Roxanne Etmekjian  
 Doug Evans & Donald Eunson  
 Anne Exter & Lance Kawesch  
 Fran & Gary Feldman  
 Bill & Carol Fenniman  
 Bill & Antoinette Fidler  
 Jerry Fielder  
 Norma Finkelstein &  
 Michael Brower  
 Sarah Fisher  
 Tom Formicola &  
 Lenny Goldstein  
 Marjorie & Donald Forte,  
*In Honor of Spiro Veloudos*  
 Frances Francis  
 Linda & John Freeman

Mary M. French  
 Alan & Deborah Friedman  
 David Friend  
 "Women's Night Out" Friends,  
*In Memory of Irene Sloat*  
 Sarah Gallivan  
 Judith Ganz & Lawrence Gray  
 Paul V. Garrity  
 Edward & Julie Ginsburg  
 Sara S. Glidden &  
 Paul A. Perfetti  
 Steve Godfrey  
 Charles Golay  
 Janet Goldenberg  
 Jeffery Gray  
 Ann Green  
 Linda & Stephen Greyster  
 Jeffrey Guenette, *In Memory of*  
*Margarita Martinez*  
 Ragnhild Gundersen  
 Merna Guttentag  
 Bill & Susan Hadge  
 Lynn Ann Hajducky, *In Memory*  
*of Dollina Borella*  
 Philip & Mary Hamilton  
 Laura Hargrove  
 James Harper  
 J. William Harris &  
 Terry K. Rockefeller  
 Robert & Penny Herbert  
 Thomas & Elizabeth Hess  
 Steve Hoffman  
 Bill & Sandy Horne  
 John Hull  
 Diane Jacobs  
 Mark Jahnke  
 Kirk James  
 Will Jennings-Hess  
 Karl & Christine Johnson  
 Bill Kadish & Marie Hobart  
 Anne Kelly  
 Doreen Kilkelley  
 Sima Kirsztajn  
 Richard & Anita Korzeniewski  
 Jacqueline Kovacs & Allen Post  
 Alexander Nedzel &  
 Susan Kruger-Nedzel,  
*In Honor of the Lyric Stage*  
*Staff*  
 Gail & Elliott Laffer  
 Joanne Laptewicz-Ryan  
 Pam LaRue  
 Michelle Lavers  
 Bernadette M. Leber, MD  
 Rebecca A. Lee  
 Sharen & Andrew Leonard  
 James Lerner  
 Elaine P. Levine  
 Helen & Warren Lewis  
 Victoria Liebetau  
 Lois L. Lindauer & Bill Seltz  
 Linda & Jack Lola  
 Ann Loudermilk, *In Memory of*  
*William "Billy Jak" Jakielaszek*

Susan Loveland &  
Douglas Hodes  
Cynthia G. Lovell  
Claron Lunt  
Marge MacEvitt  
Charlie MacLeod  
Judith Marino  
Deena Matowik  
Patricia Mazza  
Anne McKinnon & Jeffrey Ferris  
Rosa Maria McLaughlin  
James McSweeney  
Lynn McWhood  
Brett & Julia Miwa  
Mayo & Daniel Morgan  
Elizabeth Murray  
Sally Muspratt  
Judith Myerson  
Greg Nash  
Linda & Steve Nathanson  
Leslie Nelken  
Dr. Linda Nelson  
M. B. Nelting  
Pamela Oliver &  
Mark Whittaker  
Nancy Olson  
Patrick & Lynn O'Shea  
Elaine & Joe Paster  
Tom Peckham & Ellen Petersen  
Karen Perlow & Dale Place  
Kevin Peterovek  
Michael Pevzner  
Susan & Paul Phaneuf,  
*In Memory of Dollina Borella*  
Harold Picken  
Linda Pierre  
Kenneth & Judith Pogran  
Jacqueline Kovacs & Allen Post  
Ruth Powell  
Donna P. Prince  
Sue Prindle  
Susan Richards  
Bruce & Nina Robertson  
Robert & Mary Rose  
Melissa Rouleau  
Sarah E. Rowley  
Allison K. Ryder &  
David B. Jones  
William Santoro  
Dick & Dot Santos  
Leslie Sargent &  
David Roseman  
Carl Saslow  
Carolyn Saxon-Ruccio  
Paula & Ralph Dinneen  
Joel Schwartz  
Kenneth & Cynthia Scott  
Susan & Michael Scott  
Barbara Shea  
Harvey & Debora Sherman  
Zoe Sherman  
David W. Shuckra &  
Clifford S. Wunderlich  
Angela Siciliano

Rita & Harvey Simon  
Carole & Jack Skowronski  
William & Margaret Smith  
Sarah Spillane  
Susan Stewart  
Shannon Stiles  
Susan & John Strand  
Barbara Talcott  
Harold Weintraub &  
Mary Thomsen  
Jeffrey Thomson &  
David Janero  
Beth Tobin  
Jeanne Trubek & Ron Webber,  
*In Honor of Spiro Veloudos*  
Barbara Truscillo  
Dawn Tucker  
Mary Verhage  
Wayne J. Villemez  
Donna L. Wade  
Beverly & John Wand  
Lisa Weidenfeld  
Joan & Jerome Weinstein  
Murray Wheeler, Jr.  
Jerry Wheelock &  
Elizabeth Wood  
Esther C. Williams  
Robie & Jane White  
Micheline Wu  
Judith & Richard Wurtman  
Ioannis V. Yannas  
Boris & Emma Zbarsky  
Nathan Zielonka  
Linda & Jerrold Zindler

**CONTRIBUTOR'S CIRCLE  
[\$1 - \$99]**

Anonymous [5]  
Deborah Moore Abner  
Carol Abraham  
Alan Ades  
Christopher Affleck  
Dr. Michael P. Alexander  
Angela Arthur  
Liana Asim  
Rachel Babcock  
Alan Badger  
Michael & Kathy Bates  
Tracy Beck  
Christina Bellinger  
Phil Berman  
Kylie Berry  
Joy Bettencourt  
Samuel Blank  
Wesley Blauss  
Grace Blewer  
Bryn Boice  
Julie Bonenfant  
Kristen Boomer  
Noah Braunstein  
Katrina Bresse  
Ieva Broks  
Robert & Marilyn Brooks  
Tamar Brown  
Joan Bruck

Karen Bryant, *In Honor of  
Allyson Brown*  
Nathaniel Buckholz  
Marjorie Budzynski  
Trevor Burnham  
Jessie Cali  
Dr. Jeanette & Daniel Callahan  
Mary Ann Carberry  
Marie Cassidy  
Dr. Sarah Castricum  
Sheila Celata  
Barbara Cerasuolo  
Connie Chamberlain  
Susan Chebookjian  
Claire Chisholm  
Stacy Choi  
Cheryl Cochran  
Kelly-Jo Conn  
Patricia A. Courtney  
James Crissman  
Rachael Croce  
Amanda J. Crone  
Heather Cuevas  
Stephanie Day  
Rachael Donnelly  
Neal Drobnis  
Gavin Drumm  
Edward A. Dube  
Peter Dudeney  
Barbara Duffield  
Frank Edwards  
Lauren Elias  
Carol Elices  
Jenny Elkus  
Leigh Estabrook  
Sophia Evett  
Sarah Fader  
Geraldyn Falco  
Janice Farrell  
Catherine Fender  
Susan Fish  
Jeannine Fitzgerald  
Elizabeth Fogarty  
Cheryl & Don Fraser  
Gilbert Furstenberg  
Chris Gaipo  
Helen L. Garrett  
Francis Gaul  
Judith Gentile  
Laura Gersch  
Peter Gianonatti  
Todd C. Gordon  
Loretta Greco  
Preston Green  
Robert Green  
Lou Guarino  
Alison Guilmette  
Olivia Gunther  
Babak Habibi  
Todd Michael Hall  
Nancy Hammett  
Joyce Hannan  
Maryellen Hansen  
Karen A. Hanson

Stephen Harr  
Ramona Hatch  
Dr. Therese Hattermer  
Lucia Henderson  
Carol Hillman  
Jennifer Hogue  
William F. Holt  
Mark Horrigan  
Kelly Houston  
Bonnie Howard  
Michael Jackman  
David Jiles  
Chadwick Johnson  
Rachel Jones  
Tuhina Joseph  
Petra Joseph  
Judith Kamm  
Jean Kanarian  
Ed Kargir  
Deborah Donahue-Keegan  
James Keegan  
Vicky Keiser  
Samantha Kelley  
Virginia Kely  
Lewis Kotros  
Tony Koziol  
Jeffrey Robert Kushner  
Janet Lamkin  
Valerie Leiter  
Robert Alexander  
David L. Lindsay  
Jennifer Lyn Lobo  
Aileen Louik  
Valerie Madden  
Susan E. Maguire  
Mal Malmé  
Thomas Mancuso  
Cynthia L. Mapes  
Paulette Marino  
Jason Martin  
Barbara T. Martin  
Jean Martin  
Emily Mathews  
Mimi Matisse  
Laurey Mauck  
Susan Mavrincac  
Diane McCormack  
Marie McDonald  
Ellen McGarrahan  
Daphne Meredith  
Maureen Meredith  
Amy Merrill  
Martha Merson  
Shari Meyer  
William Mierse  
Catherine Minnetyan  
Robert Mitchell  
Glen & Ilyse Mohr  
Katrina Moore  
John S. Moynihan  
Curtis Nelson  
Dr. Linda Nelson  
Tessa Newell  
Katharine Nicholson

Donna O'Brien  
 James O'Brien  
 Meg O'Brien  
 Tatjana Odrjin  
 Renee L. Best-Officer,  
*In Memory of Dollina Borella*  
 Annemarie Pacheco  
 Florence Parent  
 A. Constance Parrish  
 Barbara Ann &  
 Barrie Paster, MD  
 Janet & Joel Perlmutter  
 Penelope & Jim Peters  
 Mark & Pauline Peters  
 Brandon Phai  
 Anne & Bruce Philbrick  
 John Pierce  
 Marilyn Plotkins  
 JoAnne Powers  
 Dr. Christine G. Price  
 Andrew Razza

Matthew & Christine Reilly  
 Samantha Richert  
 Stephen Ringlee  
 Thomas A. Rita  
 Bruce & Nina Robertson  
 Ms. Barbara E. Rodriguez  
 Adam Ross  
 Lisa Ryan  
 Robert Saltzberg  
 James Pacheco &  
 Dianne Sanborn  
 Jon Savage  
 Kathleen Schwartz  
 Mary Scudder  
 Racquel Sherwood  
 Joseph Silvi  
 Damon & Laurie Singletary  
 Miranda Slingluff  
 Carol J. Smith  
 James Spall  
 Cassandra Spratling

Anirudh Sriram  
 Marj W. Stark  
 Heather Stern  
 Janet Stevens  
 Lauren Stevenson  
 Linda & Don Stroeble  
 Arlene Strom  
 Camilla & Stephen Sutter  
 Laura Sylvan  
 Mia Tavan  
 Brian Tierney  
 Gary Tirone  
 Mary Todesco  
 Jeannette Tracy  
 Angela Tramontano  
 Soozen Tribuna  
 Maureen Tripp  
 Corinne Valentine  
 Nina Vansuch  
 Regine Vital  
 Jasmine Walsh

Hazel & Jordan Warnick  
 Leslie Warsaw, *In Honor of*  
*Spiro Veloudos*  
 Timothy George Webb  
 Jason Webb  
 Elizabeth Weilbacher  
 Douglas Weinstock  
 Phoebe Wells  
 Sandra White  
 Sara G. Withington  
 Cynthia Williams  
 Jason Wittrock  
 Dennie Wolf  
 Harriet Wong  
 Mary Dawn Woods  
 John Woodward, Jr.  
 Julianne Yazbek  
 Dr. Steven A. Zizza

THE  
**LYRIC STAGE**  
 YOUR THEATRICAL HOME

FEB 24 - MAR 19

He went to China for basketball but quickly  
 finds himself playing a very different game.

THE  
**GREAT  
 LEAP**

BY LAUREN YEE  
 DIRECTED BY  
 MICHAEL HISAMOTO

LYRICSTAGE.COM | 617.585.5678

2022/23 SEASON SPONSORS:  
 Paul Kastner  
 G. Lee & Diana Humphrey

PRODUCTION SPONSOR:  
 Ron Sudol



Mass  
 Cultural  
 Council

BCC  
 BOARD OF  
 CULTURAL COUNCIL





**Proud to Support the  
Lyric Stage Company  
of Boston**

**Enjoy the Show!**

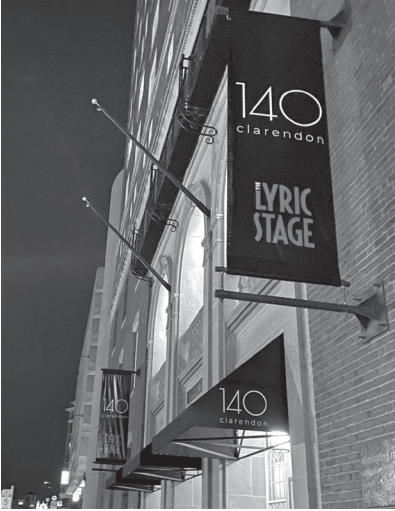
**BrooklineBank**

[BROOKLINEBANK.COM](https://www.brooklinebank.com)

Member FDIC

## ABOUT YOUR THEATRICAL HOME:

# 140 CLARENDON STREET



The Lyric Stage Company of Boston produces the majority of its work at 140 Clarendon Street, the historic YWCA Building, which resides on the land of the Massachusett and Pawtucket Peoples.

The Massachusett Peoples are the descendants of the original people that the English first encountered in what is now the Commonwealth of Massachusetts. The Pennacook tribe, sometimes called Pawtucket and Merrimack Indians, lived in northeastern Massachusetts and southern New Hampshire. The Nipmuc Peoples occupied the interior portion of what is now Massachusetts and parts of Rhode Island and Connecticut. The Mashpee Wampanoag Tribe has inhabited present day Massachusetts and Eastern Rhode Island for more than 12,000 years.

140 Clarendon Street is also the home of YW Boston, formerly known as the YWCA Boston, an organization that was at the forefront of many social movements throughout the history of the city of Boston. YWCA Boston was first established in 1866, and began operating out of 140 Clarendon Street in 1927. YWCA helped propel many programs and initiatives for young women across the country, such as sex education, women's suffrage advocacy, bilingual instruction for immigrant women, the International Conference of Women Physicians, and the Interracial Seminar. Today, YW Boston's work focuses on addressing racial and gender inequities through a variety of diversity, equity, and inclusion services, youth programming, advocacy, and more.

In 1991, the Lyric Stage moved to 140 Clarendon Street from its former home on Charles Street. The current theater and adjacent offices were constructed on the second floor of the building, and a fourth floor rehearsal hall was added in 2016.

In 2021, YW Boston and its investment partners sold the building to Beacon Communities, who began the process of rehabilitating approximately 50,000 square feet of existing hotel and residential spaces into affordable housing units, health and wellness amenities, and offices for building management staff which will be operated in partnership with the Pine Street Inn. The building will contain approximately 210 apartments (an increase of 92 housing units) all of which will be income-restricted to households with incomes at or below 60% of the Area Median Income.

As a part of the sale, Beacon Communities and Lyric Stage negotiated a new 19-year lease, ensuring that 140 Clarendon Street will be the Lyric Stage's forever home.

For more on your visit and how to contact us, box office hours, ticketing & performance policies, and other FAQs go to [lyricstage.com](https://lyricstage.com) & click on YOUR VISIT.

# THE LYRIC STAGE

The Lyric Stage Company of Boston produces and presents live theatre in Greater Boston with an intimate approach that promotes inclusivity and connection. The Lyric Stage leads an effort to integrate live theater and theater education into the lives of all residents of Greater Boston.

Founded in 1974 by **Ron Ritchell** and **Polly Hogan**, the Lyric Stage is Boston's oldest resident theatre company. After establishing a loyal following on Charles Street, Ron and Polly led a successful 1991 campaign to create the Lyric Stage's current home on Clarendon Street. Polly was the chief negotiator for the NEAT (New England Area Theatres) contract, which made it easier for local producers to hire members of Actors Equity Association, the union for actors and stage managers.

In 1998, **Spiro Veloudos** was appointed Producing Artistic Director. During his tenure, he continued Ron and Polly's commitment to local artists; with few exceptions, the theatrical artists that work at the Lyric Stage live in the Greater Boston area. Spiro also established a reputation for staging large musicals in the Lyric Stage's modest playing space, including a signature Sondheim Initiative, which covered ten musicals over twenty years.

In 2016, the Lyric Stage opened Clarendon Hall, a year-round rehearsal space. Clarendon Hall is available at a subsidized rate to members of the Boston Dance Alliance and other arts organizations and individuals.

Theatre-based education has been a core of the Lyric Stage's mission since its founding days. In 2019, the Lyric Stage merged with City Stage Co. and its expanded education programs include performances at the Boston Children's Museum, teaching artists working in classrooms in the Boston Public Schools, and the Lyric First Page playwriting festival for students.

Following Spiro's retirement in 2019, the board appointed **Matt Chapuran** as Executive Director, and shortly after, **Courtney O'Connor** was named Artistic Director. Their partnership centers Lyric Stage in Boston's theatrical community, introduces live theatre to new audiences, and promotes new theatrical voices in Boston and nationwide.

## LYRIC STAGE COMPANY OF BOSTON STAFF

**Matt Chapuran**, Executive Director  
**Courtney O'Connor**, Artistic Director

**David D'Agostino**, Production Manager  
**Heather Darrow**, Director of Marketing  
**Sarah Leaf-Herrmann**, Director of Development  
**Katherine C. Shaver**, Special Projects Manager  
**Nicolle Mac Williams**, Marketing & Development Associate  
**Chandra Pieragostini**, Associate Director of Education  
**Yvonne Murphy**, **Eva Murray**, **Chandra Pieragostini**,  
**Michele Proude**, City Stage Teaching Artists

**Spiro Veloudos**, Producing Artistic Director Emeritus

### Box Office & Front of House:

**Maia Cataldo**, Box Office Manager  
**Elizabeth Carsley**, Senior House Manager  
**Layne Alexandra**, **Emily Collins**, **Kaylee Ellis**,  
**Megan Jepsen**, **Jacob Less**, **Connor Spring**  
Box Office & Front of House Managers

**Anjali Bakhru**, **Kiyomi Casey**, **Nora Dexter**,  
**Meagan Dobyna**, **Kaylee Ellis**, **Michelle Garcia**,  
**Rodrigo Mariano**, **Afton Myers**, **Madison Sebastian**,  
**Braelyn Spittler**, **Jillian Sullivan**, **Jocelyn Wadland**,  
Box Office & Front of House Assistants

**Emeline Shepard**, Development Assistant  
**Angelina DeMonte**, Special Projects Assistant  
**Marieska Luzada**, **Kandyce Whittingham**,  
Marketing Assistants

### Stage Managers 2022/23 Season:

**Lucas Bryce Dixon\***, **Polly Feliciano\***, **Emma Hunt**,  
**Talene Pogharian\***, **Nerys Powell\***, **Josh Rodrigues\***,  
**Adele Nadine Traub\***

### Set Construction:

The scenery for this production was constructed by  
**Wooden Kiwi Productions, LLC.**

### Additional Staff:

**Melissa Wagner-O'Malley**, Graphic Design  
**Belinda Thresher**, Abella Publishing Services

\*Denotes member of Actors' Equity Association



wbur | n p r



# LISTEN ANYWHERE, ANYTIME.

News. Interviews. Storytelling.  
Your phone is a radio — stream audio, live and on demand.

[wbur.org/listen](http://wbur.org/listen)

