

THE LYRIC STAGE
YOUR THEATRICAL HOME

JUN 3 - 26

BY LOY A. WEBB
DIRECTED BY
JACQUI PARKER

THE LIGHT

A NEWLY ENGAGED COUPLE. LONG BURIED SECRETS. CAN THEY SURVIVE THE TRUTH?

LYRICSTAGE.COM | COPLEY SQ. | 617.585.5678



A NOTE FROM THE EXECUTIVE DIRECTOR AND ARTISTIC DIRECTOR



Dear friends,

We read *The Light* in 2019 and its relevance has only continued to grow over time. Theatre requires the empathy that the audience directs to the characters on the stage, as well as the empathy of the actors who bring the story to life. *The Light* forces us to ask a significant question of empathy, namely, when do we become engaged with the injustice done to someone else?

When it comes to demonstrations of empathy, we do want to acknowledge our loyal audience. We have mounted five, and if you're reading this six, productions this year under some of the most difficult circumstances one could imagine. While we have not always been successful in having actors on our stage every night that we planned, we have done our best to treat artists and guests with care.

In return, audiences this year have been abundantly kind. You have shared your stories with us, taken us by the arm to tell us when a moment on stage moved you to tears, and have offered encouraging words even when the news we've had to share hasn't been good. You carried us through this year, and for that we will be forever grateful.

Not as grateful, though, as we'll be in the fall, when we get to do it all again.

Until then, although the tunnel has been at times dark, we continue to aim for the light.

With love,

Matt Chapuran
Executive Director

Courtney O'Connor
Artistic Director

LYRIC STAGE BOARD OF DIRECTORS

Ron Sudol, President
Tim Holiner, Vice President
Glenda Fishman, Treasurer
Sharon Parisi, Clerk

Ernesto Anguilla	Joe Gimbel
Nina Berk	G. Lee Humphrey
Jazzmin G. Bonner	Alice Richmond
Katie Burkhart	Stuart Rose
Sasha Castroverde	Hannah Taytslin
Richard Daynard	
Amanda Eckhoff	

LYRIC STAGE ADVISORY COUNCIL

Janet Spitz, *Co-Chair*
Laura Mandel, *Co-Chair*

Barry P. Chaiken, MD	David R. Miller
Carmen Chan	Baron Pugh
Christopher Cook	Shwetha Ravi
Susan Gasset	Joe Richard
Wendy Gutterson	Dick Rousseau
Michelle Landers	Emily Stidsen
Jo Frances Meyer	Ruth Whitney

The Lyric Stage Company of Boston
Matt Chapuran Executive Director | Courtney O'Connor Artistic Director
presents

THE LIGHT

By
LOY A. WEBB

Directed by
JACQUI PARKER

Scenic Design, **Baron E. Pugh****
Costume Design, **Jez Insalaco****
Lighting Design, **Elmer Martinez**
Sound Design, **Owen Meadows**
Props Artisan, **Lauren Corcuera**
Production Stage Manager, **Nerys Powell***
Assistant Stage Manager, **Kylie Berry**
Intimacy Director, **Ted Hewlett**

Featuring: **Dominic Carter***, **Yewande Odetoyinbo***

Lyric Stage's 2021/22 Season sponsored by **G. Lee & Diana Humphrey** and **Bank of America**

Production sponsored by **Don & Susan Casey**
Director Jacqui Parker Sponsored by **Amanda Eckhoff & Randall Hall**

The video and/or audio recording of this performance by any means whatsoever is strictly prohibited.

THE LIGHT was originally developed at The New Colony (Andrew Hobgood and Evan Linder, Co-Artistic Directors; Stephanie Shum, Managing Director) in Chicago, Illinois. The New Colony presented the world premiere at The Den Theatre in January 2018, director, Toma Langston.

The Lyric Stage Company of Boston operates under the NEAT Agreement with Actors' Equity Association and is a member of NEAT (The Producers' Association of New England Area Theaters), and StageSource.

The Lyric Stage Company of Boston is supported in part by a grant from The Massachusetts Cultural Council, a state agency, and The Boston Cultural Council, a local agency which is funded by The Massachusetts Cultural Council, administered by the Mayor's Office of Arts, Tourism, and Special Events.

*Member of Actors' Equity Association, the Union of Professional Actors and Stage Managers in the United States

**Represented by United Scenic Artists, Local USA 829 of the IATSE



BANK OF AMERICA



**\$5
FRIDAYS!**

Five Dollar Fridays offers another way for audiences to experience live theater at an affordable cost. *100 tickets for the first Friday of every production will be set aside to be sold for \$5.*

Sponsored by Jan & Stuart Rose.

LYRIC
for All

Lyric Stage promotes inclusivity & connection in an effort to integrate live theater into the lives of all residents of Greater Boston.

Affordable Price Options include:

- \$30 Under 35
- \$25 Side Section Seats
- \$10 Student Tickets
- Senior Discount

View the full listing of participating organizations at lyricstage.com/tickets/lyric-for-all.



For more information visit



Cast of *A Gentleman's Guide to
Love and Murder* (2022).

CAST

Dominic Carter* Rashad
 Yewande Odetoyinbo* Genesis

*Denotes member of Actors' Equity Association, the Union of Professional Actors and Stage Managers in the United States

RUNNING TIME

Approximately 70 minutes with no intermission

A NOTE FROM THE DIRECTOR



HERS POWELL

Dominic Carter,
 Jacqui Parker, and
 Yewande Odetoyinbo
 in rehearsals for
The Light.

I am always thrilled when I have the opportunity to direct a universal play that includes the humor, banter, cultural music, and complexities of love. *The Light* is important because, like other well-written plays, it crosses the divides of race, religion, gender, and age. The relationship between Genesis and Rashad is filled with really cool banter that has a jazzy, soulful blues quality to it. The play has its secrets, but its foundation is love and having the courage to love—if only we could all be so brave.

This play, with this talented cast and team of designers, is my theater song. It haunts me day and night and changes from moment to moment. I will no doubt leave a piece of my soul on this sacred stage, one of my favorite places in the world.

Thank you Loy A. Webb and Lyric Stage Company.

—Jacqui Parker, Director of *The Light*

If you or someone you know has been affected by sexual violence, you are not alone. Help is available.

- National Sexual Assault Hotline: (800) 656-HOPE
 or to search for your local sexual assault service provider, please visit centers.rainn.org
- Boston Area Rape Crisis: (800) 841-8371
- Jane Doe Inc. – Massachusetts Coalition Against Sexual Assault and Domestic Violence: (617) 248-0922
- Llámamos – Statewide Spanish Rape Crisis Hotline: (800) 233-5001
- Victim Rights Center: (617) 399-6720



Dominic Carter* (Rashad) – Lyric Stage: *Twelfth Night* (Sebastian). The Umbrella Stage Company: *Fences* (Gabriel). Company One: *The Greater Good* (Michael). SpeakEasy Stage Company: *BLKS* (Justin-Understudy). Hovey Players: *Jesus Hopped The A-Train* (Angel), *RACE* (Henry Brown). Lexington Players: *The Mountaintop* (Dr. Martin Luther King, Jr.). Television/Webseries: *Unconditional Love* (Seasons 2 & 3) and *Love Undone* (Season 1). Dominic is a graduate of The Atlantic Acting School and the winner of 2021 AACT National Theater Best Actor. Special thanks to friends and family for all their support! Instagram: @itsdomcarter | Website: dominiccarter.wixsite.com/dcarter



Yewande Odetoynbo* (Genesis) – Lyric Stage: *Breath & Imagination* with Front Porch Arts Collective (IRNE Award Winner), *The Wiz*, *Little Shop of Horrors*. SpeakEasy Stage Company: *Once On This Island*, *The View Upstairs*. Moonbox Productions: *Passing Strange*, *Caroline, or Change* (Elliot Norton Nomination), *Parade*. American Repertory Theatre: *Macbeth in Stride*. New Repertory Theater: *Hair*. Reagle Music Theatre and Fiddlehead Theatre: *Show Boat*. Boston Theatre Company: *Finish Line*, *The Gay Agenda*. Wheelock Family Theatre: *In the Heights*, *Seussical*, *Ragtime*. Merrimack Repertory Theater: *Fannie Lou Hamer: Speak On It!*. Barnstormers Theatre: *Waitress*. Choreography: Wheelock Family Theatre: *Once on This Island Jr.* Moonbox Productions: *Caroline, or Change*. SpeakEasy Stage Company: *Choir Boy* (Elliot Norton Nomination). Yewande, a native of Detroit, has a BFA in Musical Theater, Howard University and an MFA in Musical Theater, Boston Conservatory at Berklee. A huge thank you to Jacqui, Courtney, Matt, the stage management team, and trusted scene partner, Dominic. Also thanks to Mom, Dad, Yemisi, and her best friends for being her biggest supporters.

Loy A. Webb (Playwright) is a Chicago-born playwright, attorney, and theatre journalist. Her plays include *The Light* (MCC Theater 2018/2019, Outer Critics Circle Nomination for Outstanding New Off-Broadway Play; *The New Colony*, 2017/2018, Joseph Jefferson Award), and *His Shadow* (16th Street Theater 2019/2020). She was an inaugural Tutterow Fellow at Chicago Dramatists. As a theatre journalist, she is a member of the Association of Women of Journalist-Chicago, a past mentor with the AWJ-Chicago/Goodman Theatre's Cindy Bandle Young Critics Program, and a contributing theater critic for Newcity. Loy holds a BA in Political Science from the University of Illinois at

Urbana-Champaign, and a JD from The John Marshall Law School. She is currently a writer on the AMC television series *NOS4A2*.

Jacqui Parker (Director) is thrilled to be directing this important play, *The Light*, at The Lyric Stage Company. Parker is a Boston-born actor, playwright, director, producer, and theater activist. She has won numerous awards including the Boston Theatre Hero Award, The Elliot Norton Award, several Independent Reviewer of New England Awards, as well as numerous community leadership awards, including the DRYLONGSO Award for her work in the struggle for racial equality. Ms. Parker directed six short plays in the Hibernian Hall New Play-Writing Lab in 2022. She is also directing Abria Smith's book of poetry, *Somebody Soup*. Her play *A Crack in the Blue Wall* received critical praise and was nominated for an IRNE Award. She has written and produced several shows and employed numerous actors, directors, designers, and playwrights of color. Ms. Parker has directed plays at Harvard University, Boston Conservatory, Emerson College, Brandeis University, and numerous Boston Theatre companies, and productions in New York and Los Angeles, California. "The stage is a sacred place and one of our greatest gifts." So glad to be back!

Baron E. Pugh (Scenic Designer)** – Lyric Stage: *Breath & Imagination*, *The Wiz*. Huntington Theatre: *The Bluest Eye* (Associate Designer). Trinity Repertory Company: *Tiny Beautiful Things*, *Radio Golf*. TheatreSquared: *The Elaborate Entrance of Chad Deity*, *School Girls*. Umbrella Theater Company: *The Colored Museum*, *The Old Man and the Old Moon*. SpeakEasy Stage Company: *Pass-over*, *Choir Boy*, *School Girls*. Pennsylvania Shakespeare Festival: *How I Learned What I Learned*. Shakespeare Theater of New Jersey: *The Comedy of Errors*, *Snug*. Baron received his MFA in Scenic Design from Boston University and is a proud member of United Scenic Artists Local 829. For upcoming productions, please visit BaronPughDesign.com. Follow @bpscenic on Instagram for behind the scenes content.

Jez Insalaco (Costume Design)** – Lyric Stage: Debut. Boston Productions Inc: *The Samuel Slater Experience*, *Dallas 1963*. Northeastern University: *This is Treatment*. Greater Boston Stage Company: *I Loved, I Lost, I Made Spaghetti*. Boston Children's Theater: *Anne Frank*, *Fancy Nancy*, *One Flew Over the Cuckoo's Nest*. Film & Television: *Spirited* (BG Set Costumer), *Don't Look Up* (Costume Fitter), *Christmas On Ice* (Key Costumer), *NOS4A2*, *Season 2* (Shopper), *Honest Thief* (Set Costumer). Jez Insalaco is a Boston-based Japanese-American costume designer and costumer, who is passionate

about creating with color and designing work that is for and by people of color. She hopes to create images through her designs that are diverse and beautiful and to empower those who see themselves in her work. I.A.T.S.E Local 48. | Website: jezdes.com

Elmer Martinez (Lighting Design) – Lyric Stage: Debut. Company One/American Repertory Theater: *Black Super Hero Magic Mama*. College Light Opera Company: *A Closer Walk with Patsy Cline*. Northeastern University: *The Bacchae*. Passion Fruit Dance Company: *Trapped*. Lakai Dance Theater: *The Block: An Afro Musical*. VLA Dance: *In the Space Between*. Urbanity: *NeXt*. Elmer is a Puerto Rican-Dominican American interdisciplinary-working theater artist. Born in Lowell, MA, he worked in the spoken word, theater, and street dance communities before completing his BFA in Theater Studies focused on Lighting Design with a minor in Dance in 2019. As a designer and community events producer, Elmer's work centers around bridging hip-hop culture and theater aesthetics. Elmer is hip-hop faculty at Urbanity Dance and currently sits as the Collaborative Arts Coordinator at Moonbox Productions. | Instagram: @elmerm_art

Owen Meadows (Sound Designer) – Lyric Stage: *The Walking Plays*. Huntington Theatre: *Common Ground Revisited*. Watertown Children's Theatre: *The Phantom Tollbooth*. Moonbox Productions: *Parade* [Assoc. Design]. SpeakEasy Stage Company: *Once on This Island* [Asst. Design/A1]. Regional Credits – Broadway: *Mister Saturday Night* [Assoc. Design]. Berkeley Repertory Theatre: *Swept Away* [Assoc. Design]. The Public Theater: *Hercules* [Asst. Design]. Owen received his BFA from Emerson College. Extra thanks to Sarah for all her love and support. | Website: OwenMeadows.com

Nerys Powell* (Production Stage Manager) – Lyric Stage: *The Book of Will*, *The Last Five Years*, *Be Here Now*, *The Treasurer*, *Agatha Christie's Murder on the Orient Express*, *Little Shop of Horrors* [AEA Assistant Stage Manager]. | Instagram: @nerysp

Kylie Berry (Assistant Stage Manager) – Lyric Stage: Debut. Emerson Stage: *As You Like It*, *Baltimore*, *Going to California*, *Everybody*, *The Resistible Rise of Arturo Ui*, *Augusta and Noble*. Marin Shakespeare Company: *A Midsummer Night's Dream*, *Spamalot!*, *Measure for Measure*. Kylie recently completed their final year at Emerson College. Special thanks to Bean for keeping them sane (and for getting cat hair on all their clothing).

Lauren Corcuera (Props Artisan) – Lyric Stage: *Breath & Imagination*, *Little Shop of Horrors*, *Agatha Christie's Murder on the Orient Express*, *The Cake*, *The Treasurer*, *Be Here Now*, *The Last Five Years*, *Mr. Parent*. Gloucester

Stage Company: *Barefoot in the Park*, *Tiny Beautiful Things*, *Seared*. Emerson Stage: *Stupid F***ing Bird*, *Next to Normal*, *Into the Woods*. Brandeis University: *Circle Mirror Transformation*. Lauren is currently the assistant prop director at Emerson College.

Ted Hewlett (Intimacy Director) – Lyric Stage: *Pacific Overtures* [Fight Director], *The Cake and Be Here Now* [Intimacy Director]. New York: *Shōgun* [original Broadway cast], *Bill W. and Dr. Bob* [Off-Broadway Fight Director], Pan Asian Repertory, Mettawee River Company, Lincoln Center Institute. Boston: Huntington Theatre, SITI Company, ArtsEmerson, Actors' Shakespeare Project, SpeakEasy Stage Company, New Repertory Theatre, Boston Theatre Works, Merrimack Repertory Theatre, Commonwealth Shakespeare Company, Wellesley Repertory Theatre, Gloucester Stage, North Shore Music Theatre, Shakespeare Now!, Boston Ballet, Boston Lyric Opera. Regional: Shakespeare & Company, Shakespeare Theatre (Washington, D.C.), Elm Shakespeare, Syracuse Stage, Kennedy Center, Fulton Opera House, Westchester Broadway Theatre, Birmingham Theatre (MI), Berkshire Theatre Festival, New York State Theatre Institute. Film/TV: *Hook*, *Army of Darkness*, *Brush Up Your Shakespeare*. Faculty: Emerson College; Shakespeare & Company. Ted has an MFA in Acting from Brandeis University.

Matt Chapuran (Executive Director) was Managing Director of the Lyric Stage from 2014 to 2018. He was previously Managing Director of Stoneham Theatre, where he ran the 2010 Boston Marathon with Producing Artistic Director Weylin Symes in support of Stoneham Theatre's educational mission. Matt has also served as Director of Development for Conservatory Lab Charter School and managed institutional giving for The Huntington Theatre. At the Nora Theatre Company, Matt was Managing Director during the inception of a capital campaign that ultimately led to the construction of the Central Square Theater. Matt has performed, taught, and directed improvisation for two decades, including as a part of Babson College's MBA program, as one half of the improv team *The Angriest Show in the World*. He currently teaches Arts Management at Emerson College. He lives in Roslindale with his wife and their three daughters.

Courtney O'Connor (Artistic Director) joined the full-time staff of the Lyric Stage in 2018 and was named Artistic Director in 2020. She has directed several pieces for the Lyric Stage, including *Stones in His Pockets*, *Red Hot Patriot*, *The Cake*, *Be Here Now*, and *The Book of Will*. Courtney is a senior affiliated faculty member in Performing Arts at Emerson College. In addition to directing for theatres and universities, Courtney has

COMMONWEALTH SHAKESPEARE COMPANY
PRESENTS



MUCH ADO ABOUT NOTHING

BY WILLIAM SHAKESPEARE

DIRECTED BY
• MEGAN SANDBERG-ZAKIAN

July 20 – August 7, 2022

FREE ON BOSTON COMMON
commshakes.org

SPECIAL EVENT—JUN 8-26, 2022
(not part of the subscription series)

WOODY SEZ: THE LIFE AND MUSIC OF WOODY GUTHRIE

Joyous, toe-tapping, and inspirational, *Woody Sez* brings to life the stories and songs of America's great troubadour. The four performers, playing more than 20 instruments, transport the audience through the riveting and often controversial life of Woody Guthrie. Musical numbers include "This Land Is Your Land," "Pastures of Plenty," "Bound for Glory," "Hard Travelin'" and "So Long, It's Been Good To Know Yuh." Recommended for ages 12 and older.

HOOTENANNIES! An informal hootenanny, or folk music jam session, will follow the Sunday matinees on June 12, 19, and 26. Local musicians and audience members are encouraged to perform along with the cast.

www.mrf.org/woody



actors'
shakespeare
project

THE BOMB- ITTY OF ERR- ORS

BY
JORDAN
ALLEN-DUTTON,
JASON CATALANO,
GREGORY J. GAIVUM,
JEFFREY QAIYUM,
& ERIK WEINER
DIRECTED BY
CHRISTOPHER
V. EDWARDS

MAY 25 - JUNE 26

FOR TICKETS,
Call 617-241-2200 or visit
www.actorsshakespeareproject.org



THE LYRIC STAGE YOUR THEATRICAL HOME

ABOUT YOUR LYRIC STAGE COMPANY OF BOSTON VISIT

For more on
how to contact us,
Box Office hours, ticketing
& performance policies,
and other FAQs go to
lyricstage.com &
click on Your Visit.



directed multiple site-specific productions at locations including Mount Auburn Cemetery and Boston's Old State House. Through her work with the Coyote Theatre Project, she oversaw the creation of more than 200 new 10-minute plays written by youths from Boston. Courtney has received the Elliot Norton award for her work as the Associate Director on the Lyric Stage's production of *The Life and Adventures of Nicholas Nickleby* and the Alan L. Stanzler Award for Excellence in Teaching.

***Actors' Equity Association (AEA)** was founded in 1913. The first of the American actor unions, its mission is to advance, promote and foster the art of live theatre as an essential component of our society. It represents more than 40,000 actors, singers, dancers, and stage managers working in hundreds of theatres across the USA. Members are dedicated to working in the theatre as a profession and upholding the highest artistic standards. AEA negotiates wages, working conditions, and provides a wide range of benefits, including health and pension plans. Through its agreement with Equity, this theater has committed to the fair treatment of the actors and stage managers employed in this production. AEA is a member of the AFL-CIO and affiliated with FIA, an international organization of performing arts unions. | actorsequity.org

****United Scenic Artists (USA-Local 829)** is a labor union representing designers and artists in the entertainment industry. Membership includes the security of working under a collective bargaining agreement, better working conditions and wages, and access to health insurance, a pension plan, an annuity plan, and a 401(k). Members are artists and craftspeople working in film, theatre, opera, ballet, television, industrial shows, commercials, and exhibitions. | usa829.org

ADDITIONAL PRODUCTION STAFF

Covid-19 Safety Officer, **Emily Collins**
Production Assistant, **Max Dupuis**
Head Electrician, **Adlai Faigen**
Wardrobe Supervisor, **Hannah Schurman**

MUSIC CREDIT

"Natural High" from the EP *After Hours*
Allyssa Jones feat. Apollo Payton

Produced by **The Audio Outfit**

Guitar: **Wain Jones**

Bass: **James Gurrier**

Written by **Apollo Payton, Khalel Pritchard,**
& Jahmal White

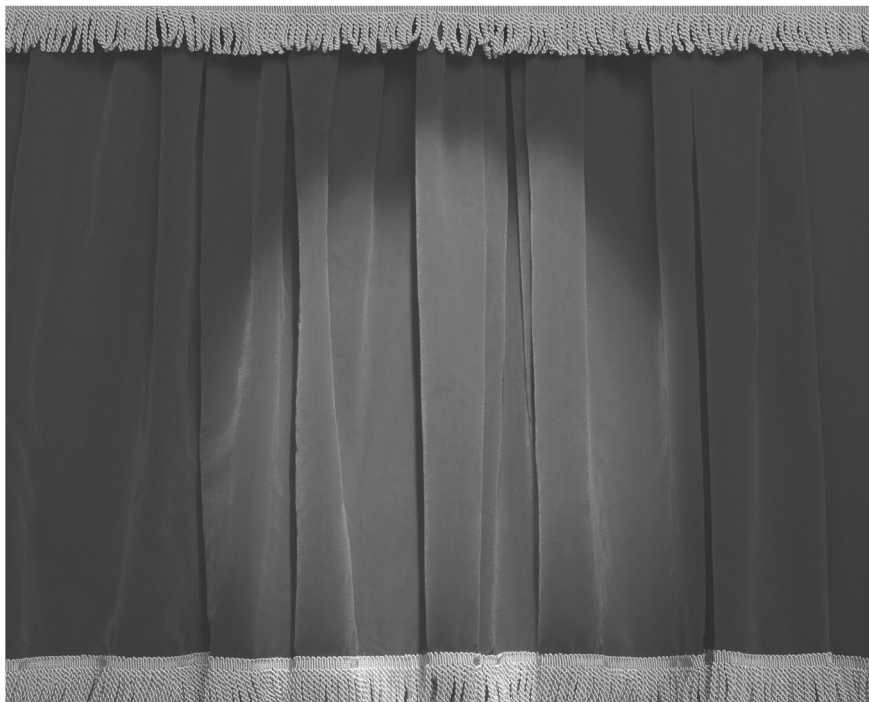
Arranged by **Apollo Payton & Jahmal White**

Recorded by **Apollo Payton at Levels Studio**
(Boston, MA)

Mixed by **Andy Pinkham**

[c] 2016 by Allyssa Jones for Grown A\$\$ Woman
Records. All rights reserved.

Listen & download here:
allyssajonesmusic.com



Thanks for putting art in the heart of the community

Bank of America recognizes the Lyric Stage Company of Boston for its success in bringing the arts to performers and audiences throughout the community. We commend you on creating an opportunity for all to enjoy and share a cultural experience.

Visit us at bankofamerica.com/massachusetts.

BANK OF AMERICA 

SPOTLIGHT ON OUR ARTISTS

WARDROBE & WIGS: JOEY PISANO & KATHLEEN SHANAHAN



Kat Shanahan and Joey Pisano have been working backstage together for the past nine years, but *A Gentleman's Guide to Love and Murder* was their first opportunity to work together at Lyric Stage. Assisting the actors on *A Gentleman's Guide to Love and Murder* (including ELEVEN 45-second quick changes with Neil A. Casey) was an absolute joy!

They've also worked together at such companies as North Shore Music Theater, SpeakEasy Stage Company, Greater Boston Stage Company, Theatre By the Sea, and New England Conservatory

Separately, you may find them performing costume and wig changes at the Huntington Theatre, Moonbox Productions, Boston Ballet, Boston Baroque, or Norwegian Cruise Line. Their teamwork thrives when they're performing 30-second quick changes with rigged costumes, hidden zippers, and elastic-laced shoes. There is no better feeling than the first time a full costume change happens in under a minute!

Kat and Joey are vital teammates backstage, and when they leave the stage door, they have a friendship that rivals those of Mary & Rhoda or Lucy & Ethel.



The cast of *A Gentleman's Guide to Love and Murder* (2022).

FABULATION

OR, THE RE-EDUCATION OF UNDINE

By Lynn Nottage

*From the penthouse to mom's house.
A riches-to-rags story asking "can you
ever really go home again?"*

SUBSCRIBE NOW!

SEP 16 - OCT 9, 2022 | Success. Love. Fabulous wardrobe. Undine has it all. Until her husband steals her hard-earned fortune, sending her tumbling down the social ladder. Pregnant and penniless, with life unraveling at every turn, Undine is forced to return home to Brooklyn and the family she left behind, in a crude new reality.

THE PLAY THAT GOES WRONG

By Henry Lewis,
Jonathan Sayer &
Henry Shields

It's so bad, it's good.

NOV 11 - DEC 4, 2022 | "Break a leg!" takes on a whole new meaning for the Cornley University Society's opening night performance of *The Murder at Haversham Manor*. An unconscious leading lady, a corpse who can't play dead, a ruffled detective, and a word-mangling butler (among others) must battle against technical gaffes, forgotten lines, and sabotaging scenery in a quest to arrive all in one piece at the final curtain call.

PRELUDES

By Dave Malloy

"I just want to be remembered."

JAN 6 - 29, 2023 | A musical fantasia, *Preludes* unfolds in the hypnotized mind of composer and virtuoso pianist Sergei Rachmaninoff as he attempts to overcome his writer's block following a disastrous premiere of his Symphony No. 1 in D minor. Creativity is unlocked and ignited through Dave Malloy's (*Natasha*, *Pierre & The Great Comet of 1812*) bewitching mashup of original compositions and Rachmaninoff's own work that takes us on a glorious journey on an artist's quest to secure a legacy and reclaim a voice.

2022/23 SEASON!

Available.



FEB 24 - MAR 19, 2023 | It is 1989, San Francisco, and Manford Lum dominates the high school basketball courts. Facing an uncertain future, he convinces Saul, a cynical and crusty coach, to let him travel to Beijing for a “friendship” game in China. Waiting there is a Chinese national coach with unfinished business, both with Saul and with Manford. On the eve of historic demonstrations, all three men are challenged to define their pasts and their futures.



By Lauren Yee

Every game is a second chance.

APR 7 - 30, 2023 | After witnessing a murder, free spirited, disco diva Deloris Van Cartier finds herself in protective custody at a convent. At odds with a rigid Mother Superior, Deloris finds divine intervention bringing the choir from dour to dazzling with her signature style. While Deloris is busy raising the roof, her cover is blown and her new found sisterhood rallies around her with a lot of love (and maybe a few sequins) in a tribute to the power of friendship.

Sister Act

Music by Alan Menken

Lyrics by Glenn Slater

Book by Bill & Cheryl Steinkellner
with additional material by
Douglas Carter Beane

And then there were nuns.

A divine, feel-good musical comedy.

JUN 2 - 25, 2023 | Emery Harris lives alone in a treehouse named Mabel surrounded by a dozen or so plants she researches, names, and talks to. Her overbearing sister Hazel is Emery’s only connection to reality along with her YouTube channel, where she documents her studies that have garnered several thousand followers. When her calm and quiet is disrupted by an entourage of devotees chanting and singing to her—their botanical, new-age messiah—she is forced to look down from the branches and face the outside world.

Rooted

By Deborah Zoe Lauffer

When you find yourself up a tree, something is bound to take root. An offbeat comedy about connecting in a chaotic world.

SPOTLIGHT ON OUR SUPPORTERS:

AMANDA ECKHOFF & RANDALL HALL



A Q&A with sponsors of *The Light* Director Jacqui Parker

Q: What led you to sponsor Jacqui Parker, director of *The Light*?

A: We wanted to sponsor Jacqui because we were so excited that she was coming to the Lyric Stage to direct this show. We hadn't heard about the show before but we've definitely heard and known about Jacqui! We are so excited to see her perspective directing a show which asks the audience to consider what we really know about the people we love.

Q: How long have you been subscribers to the Lyric Stage?

A: We've been subscribers for six years, but have been attending productions for many years.

Q: What are some of your favorite Lyric Stage shows?

A: We've enjoyed all the shows we've seen but the ones that have really stood out to us are *Breath &*



Johnny Lee Davenport, Lindsey McWhorter, and Dan Whelton in *Anna Christie*. (2018).

Imagination, The Book of Will, and Anna Christie. We really enjoy stories about relationships and each of these plays had a strong relationship at its core.

Q: What does it mean to you both to be part of the Lyric Stage family?

A: We've always enjoyed live theater. There's a special magic in watching something unfold on stage. The Lyric Stage is a special place, a unique and immersive three-dimensional theater experience. With the intimate venue, we feel like we are sitting in someone's living room, a classroom, or a cupcake shop watching the show unfold around us. We really appreciate how the theater brings new plays and people and stories to Boston. We are excited and happy to help support the Lyric Stage.

Generous friends like you advance our mission to produce and present live theatre in Greater Boston with an intimate approach that promotes inclusivity and connection. The Lyric Stage leads an effort to integrate live theater and theater education into the lives of all residents of greater Boston. On behalf of the Board of Directors, the Advisory Council, the staff, and our company of Boston-based theatre artists at the Lyric Stage Company of Boston, we extend our sincere thanks to those who make our work possible. Thank you for giving to YOUR theatrical home.

This list has been updated to reflect gifts through May 6, 2022. For questions, concerns, or details please contact Sarah@LyricStage.com.

**ARTISTIC DIRECTOR'S
CIRCLE (\$15,000+)**

Anonymous [1]
Bank of America Charitable
Foundation
Nina & Don Berk
BPS Arts Expansion Fund at
EdVestors
The Donald E. Fulton
Charitable Trust
The Estate of
Joan S. Greenberg
Jo-An Rolfe Heileman
Tim & Linda Holiner
G. Lee & Diana Humphrey
Paul Kastner
Massachusetts Cultural Council
Sharon & John Parisi
The Shubert Foundation
Yawkey Foundation
Richard & Sally Zeckhauser

**PRODUCER'S CIRCLE
(\$10,000-\$14,999)**

The Church Home Society, Inc.
Mary K. Eliot
Judith & James Barr
Joseph Gimbel & Joanne Strobel
James G. Kamitses &
Cynthia Bencal
Alice Richmond &
David Rosenbloom
Sam & Gretchen Shubrooks
Ron Sudol
Robert C. Volante
Mary & Doug Woodruff

**DIRECTOR'S CIRCLE
(\$5,000-\$9,999)**

Howard & Katherine Aibel
Foundation
Ernesto & Melissa Anguilla
Brookline Bank
Don & Susan Casey
City of Boston
The Fanny Cox Foundation
David Crandell &
Wendy Gutterson
Peggy Davis
Richard & Carol Daynard
JoAnne Walton Dickinson &
John Dickinson-Eaton
Amanda Eckoff & Randall Hall
Glenda & Bob Fishman
Susan H. Gasset & Rick Dennen

Google, Inc.
Hamilton Company
Charitable Foundation
The Helen G. Hauben
Foundation
Bruce Hauben & Joyce Brinton
Karen Johansen &
Gardner Hendrie
Highland Street Foundation
Bessie Pappas Charitable
Foundation
Physician Management
Resources
Joe Richard & René Morrisette
The Rodgers Family Foundation
Jan & Stuart Rose
Richard & Mary Scott
State Street Foundation
Tiny Tiger Foundation
David & Deborah Wang
Christopher R. Yens &
Temple Gill

**BENEFACTOR'S CIRCLE
(\$2,500-\$4,999)**

Marcia Bartusiak &
Steve Lowe
Carol J. Bresler &
Carolyn A. Billinghurst
The Bresler Family Foundation
Katharine Burkhart
Matt Chapuran &
Michelle LeBlanc
First Republic Bank
Garth & Lindsay Greimann
Sarah & Eric Hanselman
Jeffrey Guenette, *In Memory
of Margarita Martinez*
Jack & Dottie MacKeen
Massachusetts Convention
Center Authority
Massachusetts Development
Finance Agency
Jo Frances Meyer
Gustavo Pena & Kerry Weiss
Joe Quinn & Diane Juliar
Allison K. Ryder &
David B. Jones
David & Ann St. Germain
Anita E. Springer
Steve & Donna Tritman
Jean Walsh
Ruth Rotundo Whitney
Michael Zody & Megan Rokop

**GUEST'S CIRCLE
(\$1,000-\$2,499)**

Anonymous [3]
Cynthia Aber
Peter Ambler & Lindsay Miller
Mary Antes
Jacquelyn & Robert Apsler
Patricia Aronson
Jeannine M. Ayotte
Dr. Nancy & Christopher Baker
Lee & Michael Behnke
Diane & Fred Berk, *In Honor
of Nina & Don Berk*
Blackbaud Giving Fund
Jazzmin G. Bonner
Gregg & Nell Borgeson, *In Honor
of Audrey van Duyn &
Annabel Margolis*
Jonathan & Dixie Borus
Susan Brown
Carol Caro
Cara & Tony Casendino
Jean Chapuran Durling, *In Honor
of Matt Chapuran*
Nancy & Ron Chapuran
The James D. & Veronica E.
Chesterton Family Foundation
Carolee Coleman
Michael Connery &
Gene Marley III
Francine & Bill Crawford,
In Honor of Spiro Veloudos
Charles & Nancy Curtiss
Sandra & Doug Dapprich
Sarah E. deLima
Zach & Willis Durant-Emmons
Jon-Daniel Durbin
Jennifer L. Eckert
William & Susan Fink
Peter & Myrna Finn
Elaine Fong & Leon Yankwich,
In Honor of Janet Spitz
Joy Frieman
Philip & Barbara Graceffa
Ray & Joan Green
Sylvia E. Green
Grace & Bill Gregor
Serena & Brent Hall
G. Neil & Anne Harper
Tom & Nancy High
Agnes & John Howell
Andrea Humez
Emily Anne &
Jeffrey Jacobstein

Alexandra Pollard &
Jeffrey Kapell
Estrellita Karsh
Carol & Jim Kent
Joan Kinne
Robert Kuhn & Darcy Devney
Michelle Landers
Susan A. Lester
Will & Anastasia Lyman
Jack & Dottie MacKeen
Sharon A. Miller
Courtney Mitchell
Martha Narten
Network for Good
Stephen & Margaret Ober
Carol O'Hare &
Walter McDonald
Patrick & Lynn O'Shea
Arthur & Athena Papas
Carla Pepka
Jean Rosenberg &
Peter Southwick
Richard Rousseau
Susan E. Rudd
David & Ann St. Germain
Elyse & Donald Schuerman
Susan & Michael Scott
Marilyn M. Shesko
The Ellen L. Simons Fund at
The Boston Foundation
Gayle Smalley & Judith Curby
Somerled Arts/Macdonald CGF
Jan Spitz & Steve Truslow
Martha Stearns
Samuel Stern &
Charlotte Chase
Jan & Chris Swain
Hannah Taytslin &
Michael Devine
Steve & Donna Tritman
Audrey & Paul van Duyn,
*In Honor of Gregg &
Nell Borgeson*
The Village Bank
Arthur & Andrea Waldstein
Joelle & Harvey Wartosky
Steven & Stephanie Wasser
Martin Wattenberg
Jo Wellins, *In Memory of
DG Wellins*
Wilson Butler Architects, Inc
Jane & Michael Wojcik
Drs. Katharine & Marshall Wolf
Jerry Wheelock & Elizabeth Wood

Suzanne Whalen
Sorja Yates
Christina Young &
Michael Sampson

**DONOR'S CIRCLE
(\$500-\$999)**

Anonymous [1]
Miriam Marie Ariel
John & Sheila Arpe
David & Ann Marie Asadoorian
Margaret Avery
Michael Aylward
Edye & Bob Baker
Edward Boesel
Sasha Castroverde
Ralph Chadis
Barry P. Chaiken, MD
Carmen Chan
Theodore & Carolyn Colton
Paula V. Cortes
Robert N. Cory
Jon & Kim Davis
Judy Dillman
Christine Dugan & Frank Graves
Maria E. Epsimos
Elaine Epstein & Jim Krachey
Mark Farber & Sherry Katz
Walter Fey & Jan Bergstrom
Susan Fiegel, *In Memory of
Dr. Harold Smelson*
Elaine & Kevin Foley
Marjorie & Donald Forte,
In Honor of Spiro Veloudous
Mary M. French
David & Karen Gaylin
Dr. Linda &
Prof. Stephen Greyster
Sara S. Glidden &
Paul A. Perfetti
Stephen Gronberg &
Carol Houde
Philip & Mary Hamilton
Vanessa Hayden
Robert & Penny Herbert
Eva Herndon
Rosalind & Herb Hill
Ingrid & Michael Hillinger
Alan Hirshfeld & Sasha Helper
Gordon Holmes
Bill & Sandy Horne
Ruth A. Hunter
Clark & Susan Jarvis
Paul & Alice Johnson
Chris & Joanne Jonhston
Edgar Knudson & Louis Mula
Eric J. Krupka
Gail & Elliott Laffer
Pam LaRue
Sharen & Andrew Leonard
Ronald & Sandra Levy
Liberty Mutual Foundation
Lois L. Lindauer & Bill Seltz
Barbara Low
Jorge & Fran Martinez,
In Memory of Margarita

Damaris Martinez
Annina & Kilmer McCully
David MacDougall
Marge MacEvvitt
Richard & Beth McLaughry
Esther Messing
Alexander Nedzel & Susan
Kruger-Nedzel, *In Honor of
the Lyric Stage Staff*
Leslie Nelken
Louis & Deidre O'Brien Pepi
Carol O'Hare &
Walter McDonald
Bob & Jackie Pascucci
Frank Neely & Ron Parmakis
Lowell Partridge
Daniel Penni
Penelope Peoples
Andrea & Russel Pergament
Bob & Paula Pickett
Margaret White Plum
Joe Quinn & Diane Juliar
Shwetha Ravi
Terry & Maggie Rioux
Timothy Markoe Rivinus
Laura Rosensa
Carol & Wally Rowe
Roland W. Roy, *In Memory of
Bruce C. McCarthy*
Robert Ruben & Don Abrams
Schrupka Fund
Chuck Schwager & Jan Durgin
Joel Schwartz
Andrea Shirley &
Joyce Richmond
Cathi Tetreault
Dawn Tucker
Robert & Leslie Turner
Joan & Jerome Weinstein
Ellen Westheimer
Mary Allen Wilkes
Linda & Mark Zaitlin
Zar-Kessler Family Fund

**SUPPORTER'S CIRCLE
(\$250-\$499)**

Anonymous, *In Memory of
Larry Cohen*
Anonymous [1]
Sydney & Norman Abend
James & Elaine Alt
Berndt Anderson
Sandy & Jim Annis
Nancy Anthony
Miriam Marie Ariel
Michael & Kathy Bates
Robert & Lei Sun Berk
Gina Bernarduci
James Berriman
John O. Biderman
Debbie Bieri
Barry Bluestone
Garen Bohlin & Diana Sorensen
Margaret Brooke
Bill & Marian Bruins
Janet Burns

Judith Butler
The Cantafios
Victor & Mary Calcaterra
Charles R. Carr
Fritz Casselman &
Susan Ashbrook
Suzanne Chapman
Thomas Chesterton &
Janice Tilson
David Chosiad &
Paula Thompson
Chester & Ellen Clark
Renate Clasby
Leslie Colello
James Collins
Ellen Colton
Noreen Cooke, *In Memory of
Bishop Michael Kenny*
Anne Cullen
Debbi Darling
Alexandra Dailey
Rochelle Dein
Elizabeth de Lima, *In Honor of
the deLima family actors!*
Paula & Ralph Dinneen
Janet Distasio
Mary Kay & David Donovan
John M. Dugan &
Carol Baffi-Dugan
Norma Elias & Saul Toby
Deanne England
Jane & Arnold Epstein
Alain & Rebecca Eudarc
Martha Erickson *In Memory of
Karen S. Sturges*
Lisa & Barry Fireman
Philip & Mary Hamilton
Anne Exter & Lance Kawesch
Corey Fitz
June Carter &
Barbara Fragopoulos
Mary M. French
Donald Goldstein
Judith Ganz & Lawrence Gray
Christopher Gaucher &
Roger Ferguson, Jr.
Billy Novick & Barbara Golder
Jeffery Gray
Ann Green
Cathy & Nick Guise
J. William Harris &
Terry K. Rockefeller
Janice & Jim Harvey
Peter Haydu & Dona Sommers
Bill & Evelyn Herrick
David V. Howe
Donald & Nancy Hunton
Joseph & Ana Impelizeri
Diane Jacobs
Mary & Robert Kahn
Janis Kapler
Jacqueline Kovacs & Allen Post
Tony Koziol
John & Jill Larkin
Michelle Lavers
Heidi M. Lehner

Helen & Warren Lewis
Reuel & Malvina Liebert
Tina Lieu
Peter Loewinthan
Julia MacLaughlin
Anne McKinnon & Jeffrey Ferris
Lee Martz
Constance Matson
Glenda Mattes
Arthur McRae
John & Judith Mitchell
Brett & Julia Miwa
Mayo & Daniel Morgan
Joan Moynagh & Adam Sholley,
In Honor of Courtney O'Connor
M. B. Neltling
Tom Norris
Courtney O'Connor
Nancy Olson
Elaine Paster
Benjamin & Sylvia Perlman
Karen Perlow & Dale Place
Catherine & Daniel Phillips
Florence Poy
Sue Prindle
Catherine Racer
Katharine & William Reardon
Renaissance Charitable
Foundation
Suzanne E. Ricco
Dennis & Katherine Rieske
Kenneth Roberts
Julie Rohwein &
Jonathan Aibel
Robert & Mary Rose
Debbie & Allan Roth
Donna L. Ryan
Sherry & Tom Ryder
Kirsten Salpini
Ronald Seletsky & Loving
Family, *In Honor of the
Tewksbury Hospital Staff
Heroes!*
Douglas Shaheen &
James Rodenmacher
Zoe Sherman
Jacqueline Shina
David W. Shuckra &
Clifford S. Wunderlich
Rita & Harvey Simon
Carole & Jack Skowronski
Barbara & Alan Smith
Marylen Sternweiler
Emily & Andrea Stidsen
James & Susan Stockard
Sandra & Philip Stymfal
Takeda Oncology
Eugene & Meredith Thompson
Jay Thornton
Jeanne Trubek & Ron Webber,
In Honor of Spiro Veloudous
Alexander Turchin
Steven & Patricia Vintner
Donald Ward
Robin Weinberger

Harold Weintraub &
Mary Thomsen
Esther C. Williams
Sidney & Deanna S. Wolk
Jerry & Barbara Wood
Ioannis V. Yannas
Irma Zarinsky &
Warren Lackstrom
Boris & Emma Zbarsky
Elizabeth & Andrew Zucker

**FRIEND'S CIRCLE
(\$100-\$249)**

Anonymous [5]
Rosalie Abrams
Joseph & Deborah Aiello
Miki C. Akimoto
David Albert
Cynthia D. Allen
Megan Allen
Kathleen Almand & David Beal
Nathalie Alpert, *In Honor of
Jennifer Alpert*
Joel & Judith Alson
Amazon Smile
Matthew & Cheryl Anderson,
*In Memory of Christina D.
Anderson*
Cal & Tedford Armistead
The Arpin Family
Judy & Bob Azanow
Paula G. Barta &
William Lee Roberts
Tom Beaulieu & Rob Peters
Carol Becker, *In Memory of
Ruth Becker*
Hilary A. Bede
Keith Bell & Brian Shannon
Madelyn Bell
Judith Blatt
Victor & Iona Bonneville
Lynn Borkowski
Susan Britt
Robert & Marilyn Brooks
Webb & Jeff Brown, *In Honor
of Paula Plum*
Kathleen Calore
Marty Carlock
Marlene A. Carr
Matthew Carr
Arthur Carver
Carole Charnow
Claire Chisholm
Barbara Cherubini
Alden W. Clark
Jonathan Clark
Ben Cohen & Kevin Wulff
Katherine Connolly
Jennifer Coplon & Robert Frank
John Cornwell
Mr. & Mrs. David Crellin
Matthew G. Croak, *In Honor
of Richard & Catherine Croak*
Harold S. Crowley, Jr.
Sandra Cullison
Douglas DeFonzo

Donald E. Denniston
Donald R. Dickinson
Glenn Dodge
Edward & Monica Driggers
Peter & Jana Dublin
Emily Ehrenfeld
Ron & Zina Eisenberg
Samuel Ellenport
Kathleen Engel & Jim Rebitzer
Roxanne Etmekjian
Sheila Fair
Bill & Carol Fenniman
Janet Fidelman
Bill & Antoinette Fidler
Jerry Fielder
Norma Finkelstein &
Michael Brower
Sarah Fisher
Timothy J. Fitzgerald
Tom Formicola &
Lenny Goldstein
Barbara & Marvin Fox
Debbie Freedman & Bob Tripp
Linda & John Freeman
Mary Furash
Sarah Gallivan
Nancy Garrison
Paul V. Garrity
Katherine Gibson
Edward & Julie Ginsburg
Giving Foundation, Inc.
Glassman Family
Charitable Fund
Charlie Golay, *In Memory of
Irene Sloat*
Dr. Stephen Goldfinger
Boris Goldowsky
Martin & Betty Greif,
*In Memory of Margarita
Martinez*
Nancy E. Grissom
Elizabeth Grube
Ragnhild Gundersen
Joseph & Merna Guttenberg
Lynn Ann Hajducky,
In Memory of Dollina Borella
Michael Hall
Ellen S. & Michael E. Hallor
The Hamel family, *In Memory
of Marian Bertone*
Wendy Bailey Hamilton
James Harper
Jay Hanflig & Donna Linden
Roy Harris & Eileen McIntyre
Ann Hartstein
Kalman & Ellen Heller
Joel B. Hersh
Jessica Herzog
John & Peggy Heywood
Julianne Hickey
Pamela & Peter Hoffman
William F. Holt
Beth Houston
Jane Hucks
Susan Hunziker
Shirley & Chuck Hurwitz

Ann Marie, Jeffrey &
Moriah Illsley
Elaine Inker
Naomi B. Isler
Preston Green
Kirk & Fern James
Dr. & Mrs. Richard B. Janney
Karl & Christine Johnson
Frick & Karen Jones
Cynthia Kagno &
David Wittenberg
Bill & Constance Kantar
Mark G. & Rosalind F. Kaplan
Ron & Ariel Kappler
Beverly Kargir
Rudy Kass
Patricia Keighley
Roxanne Kelber & Michael Tabak
Jane Kelley
Anne Kelly
Julie & Maryanne King
Sima Kirsztajn
Elissa Koff
Nancy F. Korman
Maureen Kruskal
Bernice Kuca
Nancy Kurtz
William & Maureen Lafrance
Anne Lauriat
David & Janice Lawrence
Bernadette M. Leber, MD
Paul & Maxine LeBlanc,
In Honor of Matt Chapuran
James Lerner
Joan M. Levangie
Elaine P. Levine
David L. Lindsay
Margaret Lo
Tammy Gooler Loeb & Bob
Loeb, *In Honor of Nina Berk*
Linda & Jack Lola
Ann Loudermilk, *In Memory of
William "Billy Jak" Jakielaszek*
Susan Loveland &
Douglas Hodes
Sandra & David Lyons
Charlie MacLeod
Barbara P. Madden
Alexis Maharam
Anne Mahoney
Jeff Mahoney & Aimee Doherty
David & Kathy Maister
Deborah McElhinney
Mary Maker
Suzanne Marcus
Susan Maren
Judith Marino
Patricia Mazza
Deena Matowik
Diane McCormack
Kathleen McCormack
Arthur McRae
James McSweeney
Lynn McWhood
Karole Mendelsohn
Martha Merson

Eva Mosely
F. Taft & Anna Murray
Sally Muspratt
Greg Nash
Linda & Steve Nathanson
Dr. Linda Nelson
Leslie Newman
Debora Nickla
Sally Nottage
Linda & Bruce Novak
Joseph & Anne O'Connor
Pamela Oliver & Mark Whittaker
Ellen & Steve Parker
Tom Peckham & Ellen Petersen
Susan & Paul Phaneuf,
In Memory of Dollina Borella
Ellen & James Perrin
Kevin Peterovek
Elisabeth Peterson
Anne & Bruce Philbrick
Harold Picken
Joyce Plotkin & Ben Aspel
Kenneth & Judith Pogran
Brenda & Ethan Pollack
Jim Pransky
Donna P. Prince
The Estate of Gloria G. Ratti
Floranne Reagan
David Reiner & Cynthia Eid
Barbara & Del Richmond
Peter Jason Riley
Bruce & Nina Robertson
Carol Rosensweig &
Charlene Grant
Beth Rosenzweig
Margaret Ross Link & David Link
Elizabeth Simon & William Ross
Sarah E. Rowley
The Ruboy Family, *In Memory
of Doss Wellins*
Sallie & Bob Runck,
In Memory of Bert Weber
James Pacheco &
Dianne Sanborn
Dean & Joy Salpini
William & Jacki Santoro
Dick & Dot Santos
Dorette Sarachik
Leslie Sargent &
David Roseman
Carl Saslow
Barbara Scafidi
Leslie Schwartz
Kenneth & Cynthia Scott
Robert Seiler
Marci Shaw
Harvey & Debora Sherman
Daniel Simpson
Ellen & Jay Sklar
Lauren Sloat
William & Margaret Smith
Maureen Smotherman
Emmett & Grace Sprecher,
*In Honor of Leo & Karin
Sprecher*
Bob & Bobbie Steinbach



**COMPUTERIZED HELPLINES,
VIRTUAL ASSISTANTS OR
BANKING DELIVERED
WITH A PERSONAL
TOUCH.**

**BANKING
WELL-CRAFTED**

BrooklineBank

MEMBER FDIC

[BROOKLINEBANK.COM](https://www.brooklinebank.com)

Susan & John Strand
Eugene & Madeline
Straussberg
Karen Sturges
Jane Sturtevant
John & Nadine Subrier
Judith Sweeney
Pamela Wing
Jeffrey Thomson & David Janero

Marilyn Tierney
Barbara Truscello
Anita P. Turner
Eleanor Uddo
Mary Verhage
Donna L. Wade
John & Beverly Wand
Leslie Warshaw, *In Honor of
Spiro Veloudos*

Elizabeth Weilbacher
Roseli Weiss & Robert
Winograd, *In Memory of
Doss Wellins*
Janice Wester
Murray Wheeler Jr., *In Honor
of Mary K. Elliot*
Robie & Jane White
Sue Wing & Tom Lavin

"Women's Night Out," Friends,
In Memory of Irene Sloat
Regina Wright
Micheline Wu-Heal
Joan Zahorian
Robert & Shirley Zimmerman
Linda & Jerrold Zinder

**Our thanks to the others listed here who have helped us
weather the most perilous storm in Lyric Stage history**

Anonymous [7]
Carol Abraham
Gloria Ackroyd
Stefanie Adams
Alan Ades
Jory Agate
Hazel Akimoto
Susan Albrecht
Carol Albright
Rosanna Alfaro
Cynthia D. Allen
Irving & Betty Allen
Jim & Marie Allen
Meredith A. Allen
Susan Allison
Sarah Alsayer
Deborah J. Alsebai
Annemarie Altman
Diane Amerault
Ameriprise Financial
Elizabeth Anderson Conrad
Beth Ann Anderson-Song
Abigail Arnold
Julie Arvedon Knowlton
Bob & Linda Asher
Sandra Asher
Janice Axelrod
Kaley Bachelder
Alan Badger
Nancy Baker
Patricia Baker
Brian Bakofen
Carol J. Ball
Bronwen & Bob Ballou,
In Memory of Doss Wellins
Ken Baltin
Ruth Barnes
Leigh Barrett
Nancy Barry
Irene Bauer
Anne Baynes
William H. Bean
Laura K. Beasley-Topliffe
Marci Beaudoin
Judith Feins & Bruce Bell
Katherine Belmont
Susann Benoit

Kylie Berry
Margot A. Biggin, *In Memory
of Doss Wellins*
Priscilla Biondi
Christie Blaine
Samuel Blank
Grace Blewer
Barbara Bloom, *In Memory
of Doss Wellins*
Kristen Boomer
Rhys V. Bowen &
Rebecca Snow
Betty Blume
The Bowen-Flynn
Rosemary Boynton
Libby & Peter Bradshaw
Eric & Kasia Braun
Susan Bregman
Bright Funds Foundation
Izetta Bright
Kathy Brodsky
Margie & Gilbert Brodsky
Darlene Brown
Elizabeth Brown
Tamar Brown
Joan Bruck
Karen Bryant, *In Honor of
Allyson Brown*
Beth Budny
Robert & Carol Bullivant
Carole L. Bundy
Trevor Burnham
Diane Butkus
Rebecca Butler
Jeanine & Vojtech Bystricky
Daniel & Jeanette Callahan
Marianne Callahan
Donald & Sondra Caplin
Mary Ann Carberry
Marta Carney
Russ & Sandy Carriker
Sally Casper
Sheila Celata
Barbara Cerasuolo
Fran Charnas
Susan Chebookjian
Maryellen Chiariello

Koren L. Christensen
Kourtney Christiansen
Kristen Ciambrone
Jay S. Clark
Katie Clark
Dorothy Clawson
Cheryl Cochran
Brenda Cohen
Laurence Cohen
Claire & Oren Cohen
Carole Coleman
David Coleman
Scot Colford
Gretchen Conklin
Nora Conley
Stephen Conley
Mary Conlon
Sinead Conlon
Michael Connolly
Denise Conry
V. David Cooper
James Copper
Lauren Corcuera
Harriet Cort
Richard & Jane Costa
Perry Cottrelle &
Suzanne L. Robblee
Dalesha Craft
Kevin Cranston
James & Linda Crawford
Amanda Crone
Carolyn Cronin
Harold S. Crowley Jr.
Allison Crump
Anne Cullen
Michael Cummings
Susan Cumiskey
Paula Cuozzo
Grace Curley
William D. Curtis
Susan D'Arcangelo
Charley & Elaine Davidson
Stephanie Day
Donald E. Denniston
Edmund & Judith Dente
Diane DiCroce, *In Memory
of Marian Bertone*

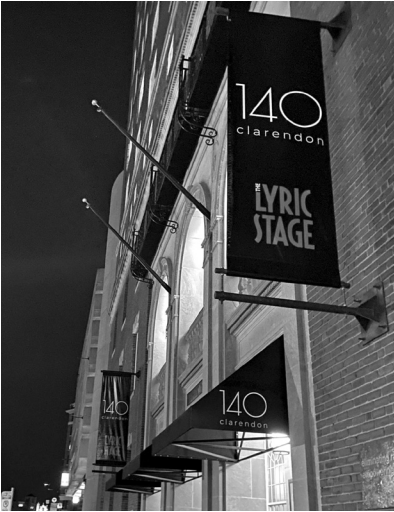
Chelsea Diehl
Mary L. Dill
Anna Doering
Patty Dolan
Paul Donovan
Philip Dooher
Row W. Doolittle
Robert Dorer
Richard S. Doring
Joan Doucette
Thomas Doucette
Nancy Doyle
Brendan Drischler
Edward A. Dube
Barbara Duffield
Joan Dubis
Peter Dudeney
Charles Q. Duncan
Frank Dunn
Richard Duran
Nancy Eagen
William J. Ehmann, *In Memory
of Elvira Ehmann*
Frank Edwards
Lauren Elias
Sara Elkin
Jenny Elkus
John Elliott
Lee Emerson
Kathleen Emrich
Carol & Lewis Epstein
Terry & Ann Esvelt
Erol & Joan Ethier
Allison Evans
Sophia Evett
Sarah Fader
Tasha Fain
Geraldyn Falco
Linda Faldetta
Paul E. Fallon
Phyllis & Sumner Fanger
Patricia Feeley
Ellen Feldman
Fran & Gary Feldman
Kevin Fennessy
Martha Ferko
Janet Fidelman

- Lorraine Fine
Barbara Finegan
Susan Fish
Mary K. Fitzsimmons
Susan Fliegel, *In Memory of
Dr. Harold Smelson*
Birlyn D. Flint
Rebecca Flint
Colleen Ford
Merrill Forman
David M. Fram
Diane Francis
Frances Francis
James Franco
Rick Frank
Cheryl & Don Fraser
Ellen Frechette
Rita Freuder
Alan & Deborah Friedman
David Friend
David Frstrom
Frank Furnari
Gilberte Furstenberg
Terrance J. Gaetz
Leslie Garber
Lyn Gardner
Richard Garick
Helen L. Garrett
Ann Marie & Denise Geanisis,
In Memory of Liz Kastner
Jill Geisler
Lisa Gemellaro
Judith Gentile
Laura Gersch
Roberta Gerson
Nancy Gertner
Ernestine Gianelly
Peter Gianonatti
Katherine Gibson
Theresa Girard
Lori Glaser-Korn
Marilyn Ginner
Steve Godfrey
Hon. Jessica Going
Jon Goldberg
Maxine & Don Goldberg
Janet Goldenberg
Eve Goldfarb
Phyllis & Leon Goldman
Katrina Goldowsky-Dill
Steven Gordon
Todd Gordon
Sheila Gorman
Teri Gorsky
Laurie Gould
Jonathan H. Grand
Gail & Roberto Grande
Loretta Greco
Brian Greene
Rhoda Greenspan
Sandy Greenwald
Daniel W. Greenwood
Elizabeth Greenwood
MJ Grein
Hildy & Richard Grossman
Nancy Grossman
- Elizabeth Grube
Lou Guarino
Peter & Beth Guenette,
*In Memory of Margarita
Martinez*
Alison Guilmette
Susan Guiraudet
Adria Gunter
Carrie Guscott
Audrey Haas
Lyn C. Hadden
Janet Haines
Kristin Hall
Helen Hamel
Todd Hamelin
Maryellen Hansen
Judi Hansjon
Barbara Hanson
Karen Hanson
Virginia Harlan
Stephen Harr
Kelly Harris
Lawrence & Shirley Hartman
Kari Haworth
Alison J. Hay, *In Honor of
Erica Spyres*
Rebecca Hayden
David Henkelmann
Daniel Herilhy
Sherry Herzog & David Ness
Patricia Hess
Thomas & Elizabeth Hess
Mary Hewson
Lawrence Hickey
Janis L. Higgins
Carol Hillman
Janet Hirsch
Brian Hirt
Susan M. Hoar
Edward & Pamela Hoffer
Jennifer Hogue
Kathleen Holland
Duncan Hollomon
William Horne
Mark Horrigan
Beth Houston
Bonnie Howard
Mary Ann Hubbard
Jane Hucks
Dr. Annie-May Hуго
John Hull
Melissa Humphrey
Marie F. Hurd
Ellen Hurlay
Christina Ifill
Thomas Jacques
Lois Jacobs
Mary-Elaine Jennings
Susan Lucille Johansen
Jalyn Jones
Shannon Lee Jones
Steven Ladd Jones
Wendy Joseph
Ashley Judge
Bill Kadish & Marie Hobart
Judith Kamm
- Jean Kanarian
Joni Karon
Diana & Howard Kassler
Matthew Kaufman
Robin & Scott Katzman,
In Memory of Marian Bertone
James M. Keating
Dawn Keene
Jeff A. Keilson
Vicky Keiser
Samantha Kelley
Virginia Kelty
Chelsea Kendall
Matthew Kennedy
Fiona & Michael Kerr
Joe Kesselman
Ginny Kiefer
Doreen Killkelley
Marion Kilson
Mary Klatt
Max Klau
Rebecca Klein
Kate Klika
Joanne Klys
Julia Knowles
Charlotte Knox & Ken Stein
Amelia Koch
Andrew Charles Koines
Frederick & Carol Kotler
Ellen Kranzer
Meenakshi Kumar
Lori L'Italien
Jacqueline M. LaBerge
Janet & Ronald Lamkin
Kim Lamoureux
Lisa Leigh Landsverk
Anna Lannstrom
Joanne Laptewicz-Ryan
Mary Lauve
Margaret Lavoie
Ginger Lazarus
Alice & Charles Leidner
Elizabeth Lennox
Gail Leonard-Wright
Marianne Lepp
Jen Lesar
Cynthia LeVine
Paula Levine
Scott Levine
Barry & Nancy Levy
Diane Levy
Debbe & Christopher Lewis
Stephen Lewis
Robert Lexander
Rebecca & Vladimir Liberman
Elizabeth Lieberman
Erica Lindamood
Mark Linsenmayer
Sonia Lipetz
Stephen & Carolyn Locke
Michael Loconto
Alex Lonati
Melissa Long
Hilda Lopez
Cynthia G. Lovell
Marya Lowry & Robert Walsh
- Rachel F. Lucas
Simon Lucas
Claron Lunt & Thomas Brien
Linda Lynch & Dan Flaherty
David & Sandra Lyons
Diane Tavitian
Kathryn MacDonald
Pauline MacDonald
Anita L. MacDonnell
Kathleen Mackenzie Household
Tracy MacNeal
Matthew E. Maltzman
Dr. Thomas Mancuso
Richard & Candace Mandel
Christine Maney
Ronni Marshak
Alexa Mason
Joe Mathis
John Mathis
Catherine L. Mazza
John Mazzotta
Gretchen McClain &
Todd Schatzki
Susan McCombs
Sandra McDonald
Will McGarrahan
Hirschel McGinnis
Lori A. McGrath
Carolyn McIver
Carol A. McKeen
Mr. & Mrs. Everton McKie,
*In Memory of Margarita
Martinez*
Rosa Maria McLaughlin
Diane McLean
Karen McNary
Julia McVay & Stanley Gross
Thomas Mancuso
Jessica Means
Joseph & Evy Megerman
Lana Barbara Melnik
Daphne Meredith
Maureen Meredith
Amy Merrill
Katrina Miaoulis
Mel & June F. Michaels
Amy Michelson
Joann Miles
Marie G. Miller
Peggy Vagts & Mark Miller
Stan & Sally Miller
Catherine Minnetyan
Ruby Mintz
Howard & Rena Mirkin,
In Honor of Diane Miller
Sarah & Rob Mitchell
Brett & Julia Miwa
Glen & Ilyse Mohr
Michael J. Moran, *In Memory of
Francis D. & Marcella A. Moran*
Douglas L. Morgan
Catherine Moritz
Patty Morrison
Robert Morrisette
Shelby Morss
Austen Moye

John S. Moynihan
 Lisa Mullins
 Beth Munn Griffin
 Elizabeth Murray
 Roberta Myers &
 Steven R. Baturin
 Judith Myerson
 Robert Mytkowicz
 Nael Nacer
 Liz Nania
 Erin Mercuerio Nelson
 Ryan Newberry &
 Deirdre Callahan
 Tessa Newell
 Charlie & Christine Nichols
 Katharine Nicholson
 Nancy Nitikman
 Atheline W. Nixon
 Anne Noble & Valerie J. Grande
 Susanna Noon
 Cathy Nowak
 Katherine O'Connor
 Adedapo Odetoyinbo
 Deji Odetoyinbo
 Elaine Odetoyinbo
 Olusegun Odetoyinbo
 Oluwole Odetoyinbo
 Rolake Odetoyinbo
 Tatjana Odrijin
 Katherine O'Hara
 Linda Okun
 Luiza Olah
 Carlos Ordonez
 Dr. Bert Ouellette
 Annemarie Pacheco
 Robert Panessiti
 Maurice Parent
 Dr. Lynn Parker
 Barbara Ann &
 Barrie Paster, M.D.
 Elaine & Joe Paster
 Dorothy Patton
 Greg Peloquin
 Ellen M. Penso
 Gamalia Pharms
 Patricia Pierce
 Linda Pierre
 Robert Pierson
 Kathryn Pile
 Elizabeth Pines-Learner
 Dr. Joseph J. Plaud
 Paula Plum & Richard Snee
 Pier Lamia Porter
 Patricia Potter
 Helen C. Powell
 Ruth Powell
 Robert Prezioso
 Suzanne Priebatsch
 Gordana Rabrenovic
 Lisa Rafferty
 Nancy Rappaport
 Doug Raymond
 Michael Read
 Fran Regan
 Michael Remavich
 Caroline & Terry Rice
 Susan Richards
 Larry Peltz & Nancy Riemer
 Judy Riggs
 Erick E. Rios
 Thomas Rita
 Jack Ritter
 Ilyse Robbins
 Lindsay Roberts
 Mona Roberts
 Paula G. Barta &
 William Lee Roberts
 Barbara Rodriguez
 Susan & Charles Rohrbach
 Janet B. Rosen
 Joan Rosenberg
 Judith Rosenberg
 Leslie Rosenberg
 Mary Rosenfield
 Adam Ross
 Ryan Ruopp
 Perry Russell
 Mary Douglass Ryan
 Alycia Nicole Sacco
 Richard Sacks
 Robert Salzburg
 Arlene Sampson
 Julie & Cruz Sanabria
 David Sandberg
 Lisa Savini
 Ms. Mary C. Savini
 Carolyn Saxon-Ruccio
 Anne Shackelford
 Barbara Scaffidi
 Doris Schannen
 Caroline S. Schastny
 Elizabeth Schneider
 Robert Schneider
 Alan & Leslie Schwartz
 Kathleen Schwartz
 Mrs. Barry Seidman
 Elizabeth Seitz &
 Jorge Abellas-Martin
 Amanda Selvidge
 Harry & Nancy Senger
 Gaylis Shakir
 Norma & Benson Shapiro
 Sarah & Richard Shaver
 Shell Oil Co. Foundation
 Hon. Julius Sheppard
 Patricia Shields
 Paula M. Shortell
 Cynthia Shulman
 Lynn Shyevitch
 Angela Siciliano
 Barbara Sigel
 Margery Silver
 Joseph Silvi
 Bert Silverberg
 Susan & Joseph Silverman
 Linda & Peter Silverstein
 Sherri Simoni
 Ellen Simons
 Sophie Sinclair
 Beth Singer
 Damon & Laurie Singletary
 Laura Sitterley
 Mary Small
 Stephanie Snow
 Paul Soper
 Madelyn Sorensen
 Bryn Sowash
 James Spall
 Alex Speir
 Monical Spencer
 Deborah Sperling
 Sarah Spillane
 Ashley Spratling
 Cassandra Spratling
 Dion Spratling
 Michele Spratling
 Roderick Spratling
 Terry Spyres
 Anirudh Sriram
 Kathy St. George, *In Memory*
 of *Theresa St. George*
 Chris Stanley & Taurus Bennett
 Marj W. Start
 Robert Stavins
 Ron Steese
 John Stella
 Masha Sten-Clanton
 Heather Stern
 Janet Stevens
 Barbara Stier
 Shannon Stiles
 Gloria Stinson
 Robert Stinson
 Cassidy Stirtz
 Marilyn E. Stone
 Robert Stone
 Pamela Strachman
 Helene Sullas-Huggins
 Judith Swanson
 Mackenzie Sweet
 Jane Swett
 Laura Sylvan
 Mary Szewczuk, *In Memory*
 of *Andrew R. Szewczuk*
 Michael Tabak &
 Roxanne Kelber
 Cecile Tagliani
 Joann Takehara & David Sanford
 Barbara Talcott
 Marcia Tanur
 Temple Israel
 Donna Tesiero
 Drs. Robert & Kathleen Thies
 Diana & Donald Thomas
 Jeffrey Thomson & David Janero
 Brian Tierney
 Halima Tiffany
 Susan & David Titus
 Geraldine Tolman
 Maura B. Troiano
 David & Elizabeth Torrey
 Angela Tramontano
 Parker Traphagen
 Carolyn Trees
 Maureen Tripp
 Kira Troilo
 Charles Thompson
 Priscilla Troupe
 Nancy & Bob Tucker
 Robert Vanasse
 Nina Vansuch
 Joshua Veilleux
 Darius Vines
 Lisa Vouras
 Margery Wadness
 Susan & Devin Waldman
 Katharine Wall
 Dianne Walsh
 Marcia Walsh
 Laura Walters
 Mr. Ronald Ward
 Linda Warner
 Hazel & Jordan Warnick
 Joan Warnshuis
 Gillian Watson
 Diana R. Watson-Phillips
 Jason Webb
 Susan B. Wedda
 Irene & Lynn Weigel
 Lyn Weiner
 Laura & Neil Weiser
 Cheryl Weisman-Cohen
 Jeannette O. Welch
 Ben Wells
 Carol Whelton
 James David White
 Sheila Willard
 Roger Winsby
 John Woodward
 Wayne J. Villemez
 Penny Wingate
 Jason Wittrock
 Jean Wood
 Karen M. Wood
 Arnie & Sally Wright
 R. Spencer Wright
 Margaret Yoon
 The Young Company at
 Greater Boston Stage
 David M. Young
 Massood Zarrabian
 Ruth Zax
 Nathan Zielonka
 Steven Zizza

ABOUT YOUR THEATRICAL HOME:

140 CLARENDON STREET



The Lyric Stage Company of Boston produces the majority of its work at 140 Clarendon Street, the historic YWCA Building, which resides on the land of the Massachusetts and Pawtucket Peoples.

The Massachusetts Peoples are the descendants of the original people that the English first encountered in what is now the Commonwealth of Massachusetts. The Pennacook tribe, sometimes called Pawtucket and Merrimack Indians, lived in northeastern Massachusetts and southern New Hampshire. The Nipmuc Peoples occupied the interior portion of what is now Massachusetts and parts of Rhode Island and Connecticut. The Mashpee Wampanoag Tribe has inhabited present day Massachusetts and Eastern Rhode Island for more than 12,000 years.

140 Clarendon Street is also the home of YW Boston, formerly known as the YWCA Boston, an organization that was at the forefront of many social movements throughout the history of the city of Boston. YWCA Boston was first established in 1866, and began operating out of 140 Clarendon Street in 1927. YWCA helped propel many programs and initiatives for young women across the country, such as sex education, women's suffrage advocacy, bilingual instruction for immigrant women, the International Conference of Women Physicians, and the Interracial Seminar. Today, YW Boston's work focuses on addressing racial and gender inequities through a variety of diversity, equity, and inclusion services, youth programming, advocacy, and more.

In 1991, the Lyric Stage moved to 140 Clarendon Street from its former home on Charles Street. The current theater and adjacent offices were constructed on the second floor of the building, and a fourth floor rehearsal hall was added in 2016.

In 2021, YW Boston and its investment partners sold the building to Beacon Communities, who began the process of rehabilitating approximately 50,000 square feet of existing hotel and residential spaces into affordable housing units, health and wellness amenities, and offices for building management staff which will be operated in partnership with the Pine Street Inn. The building will contain approximately 210 apartments (an increase of 92 housing units) all of which will be income-restricted to households with incomes at or below 60% of the Area Median Income.

As a part of the sale, Beacon Communities and Lyric Stage negotiated a new 19-year lease, ensuring that 140 Clarendon Street will be the Lyric Stage's forever home.

THE LYRIC STAGE

The Lyric Stage Company of Boston produces and presents live theatre in Greater Boston with an intimate approach that promotes inclusivity and connection. The Lyric Stage leads an effort to integrate live theater and theater education into the lives of all residents of Greater Boston.

Founded in 1974 by **Ron Ritchell** and **Polly Hogan**, the Lyric Stage is Boston's oldest resident theatre company. After establishing a loyal following on Charles Street, Ron and Polly led a successful 1991 campaign to create the Lyric Stage's current home on Clarendon Street. Polly was the chief negotiator for the NEAT (New England Area Theatres) contract, which made it easier for local producers to hire members of Actors Equity Association, the union for actors and stage managers.

In 1998, **Spiro Veloudos** was appointed Producing Artistic Director. During his tenure, he continued Ron and Polly's commitment to local artists; with few exceptions, the theatrical artists that work at the Lyric Stage live in the Greater Boston area. Spiro also established a reputation for staging large musicals in the Lyric Stage's modest playing space, including a signature Sondheim Initiative, which covered ten musicals over twenty years.

In 2016, the Lyric Stage opened Clarendon Hall, a year-round rehearsal space. Clarendon Hall is available at a subsidized rate to members of the Boston Dance Alliance and other arts organizations and individuals.

Theatre-based education has been a core of the Lyric Stage's mission since its founding days. In 2019, the Lyric Stage merged with City Stage Co. and its expanded education programs include performances at the Children's Museum of Boston, teaching artists working in classrooms in the Boston Public Schools, and the Lyric First Page playwriting festival for students.

Following Spiro's retirement in 2019, the board appointed **Matt Chapuran** as Executive Director, and shortly after, **Courtney O'Connor** was named Artistic Director. Their partnership centers Lyric Stage in Boston's theatrical community, introduces live theatre to new audiences, and promotes new theatrical voices in Boston and nationwide.

LYRIC STAGE COMPANY OF BOSTON STAFF

Matt Chapuran, Executive Director

Courtney O'Connor, Artistic Director

Kate Casner, Digital Marketing Associate

David D'Agostino, Production Manager

Heather Darrow, Director of Marketing

Sarah Leaf-Herrmann, Director of Development

Chandra Pieragostini, Associate Director of Education

Michele Proude, KidStage Manager

Katherine C. Shaver, Special Projects Manager

Spiro Veloudos, Producing Artistic Director Emeritus

Box Office & Front of House:

Joshua Veilleux, Box Office Manager

Elizabeth Carsley, Senior House Manager

Layne Alexandra, **Sivan Amir**, **Maia Cataldo**, **Emily Collins**,

Megan Jepsen, **Alyssa Lara**, **Jillian Milliard**, Box Office &

Front of House Managers

Chandler David and **Jocelyn Wadland**, Box Office &

Front of House Assistants

Administrative Assistants:

Emma Goldman, Artistic

Emeline Shepard, Development

Marieska Luzada, **Ava Straccia**, Marketing

Administrative Interns:

Gaby Nardella, **Kaylee Ellis**, **Rachel O'Brien**

Stage Managers 2021/22 Season:

Kylie Berry, **Sarah Bord**, **Lucas Bryce Dixon***,

T. Rick Jones*, **Rose Mancuso**, **Nerys Powell***,

Elizabeth Yvette Ramirez*, **Pat-rice Rooney**

Design:

The scenery for this production was constructed by

Wooden Kiwi Productions, LLC.

Melissa Wagner-O'Malley, Graphic Design

Belinda Thresher, Abella Publishing Services

*Denotes member of Actors' Equity Association

RADIO BOSTON

NOW at 11am & 3pm
with Tiziana Dearing



wbur

MAKE MORNINGS BETTER

Listen at wbur.org/radio